

**List of flood affected near by villages in Lucknow District (U.P.) as on 19th Sept. 2021**

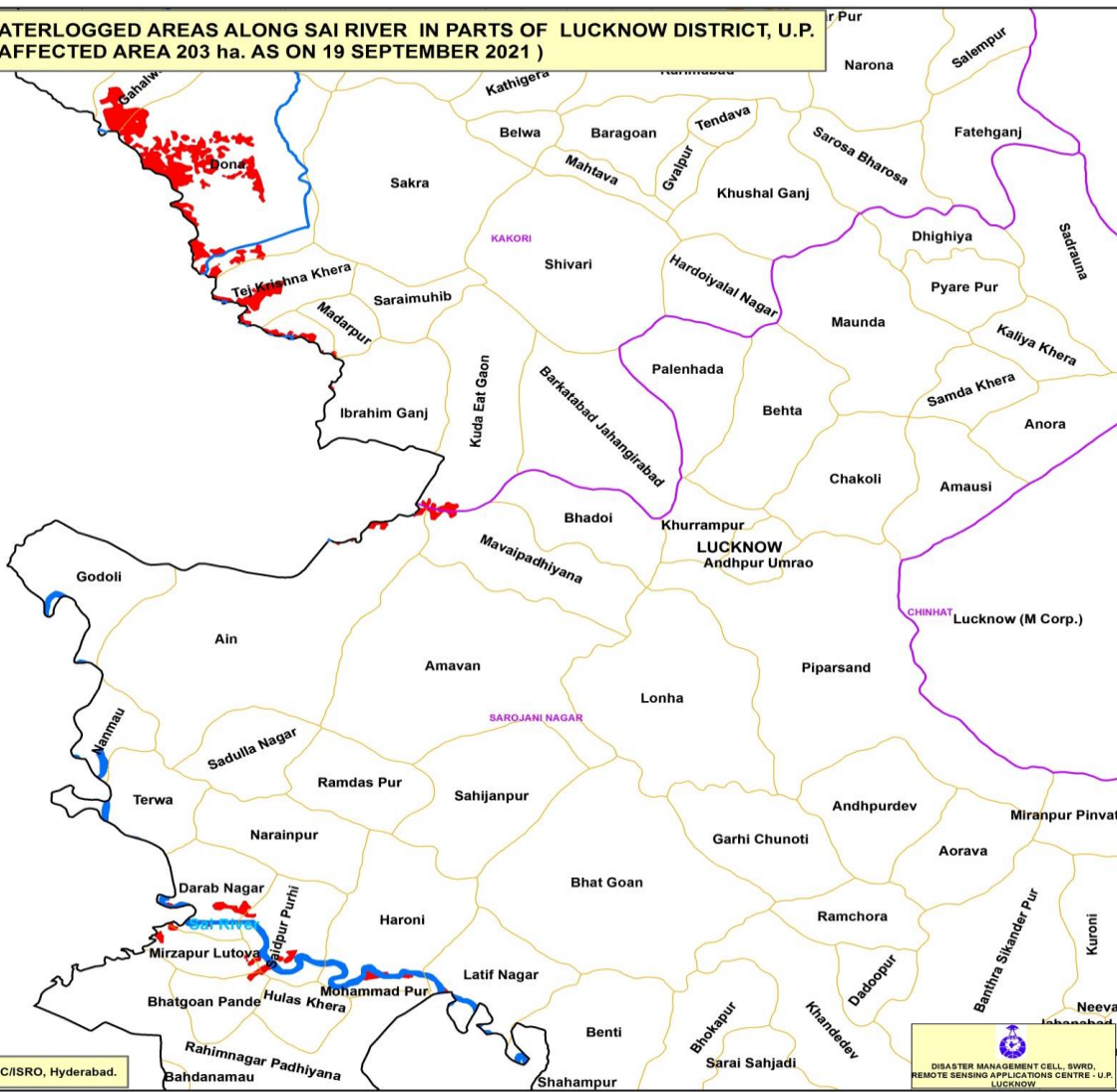
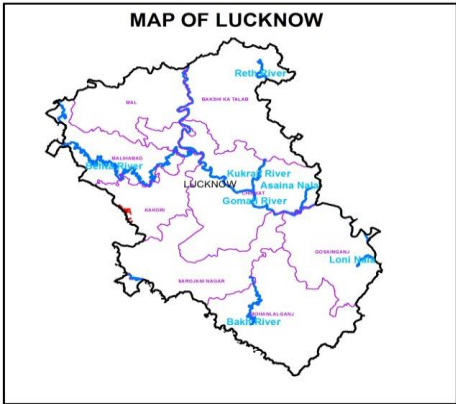
**Flood affected blocks= 2**

**Flood affected villages= 16**

**Flood affected area= 203 ha.**

S.N.	DISTRICT	BLOCK	VILLAGE	BLOCK	VILLAGE	AFFECTED AREA ( in Ha.)	LONGITUDE	LATITUDE
1	LUCKNOW	KAKORI	Gahalwara	2	16	203	80° 42' 50.743" E	26° 50' 14.139" N
2			Dona				80° 43' 35.102" E	26° 49' 22.687" N
3			Madarpur				80° 44' 32.466" E	26° 47' 47.518" N
4			Ibrahim Ganj				80° 44' 50.099" E	26° 47' 9.095" N
5			Kuda Eat Gaon				80° 45' 42.790" E	26° 47' 2.655" N
6			Tej Krishna Khera				80° 44' 0.082" E	26° 48' 10.493" N
7		SAROJANI NAGAR	Mavaipadhiyana				80° 46' 9.892" E	26° 45' 27.737" N
8			Saidpur Purhi				80° 44' 4.546" E	26° 41' 54.822" N
9			Bhatgoan Pande				80° 43' 25.255" E	26° 41' 12.303" N
10			Haroni				80° 44' 58.643" E	26° 41' 59.951" N
11			Latif Nagar				80° 45' 51.030" E	26° 41' 27.086" N
12			Ain				80° 43' 43.574" E	26° 44' 45.740" N
13			Nanmau				80° 42' 29.629" E	26° 43' 51.129" N
14			Darab Nagar				80° 43' 24.021" E	26° 42' 18.428" N
15			Mirzapur Lutova				80° 43' 17.496" E	26° 41' 40.507" N
16			Benti				80° 46' 43.656" E	26° 40' 42.470" N

**MAP FOR FLOOD AFFECTED AND WATERLOGGED AREAS ALONG SAI RIVER IN PARTS OF LUCKNOW DISTRICT, U.P.  
( FLOOD AFFECTED AREA 203 ha. AS ON 19 SEPTEMBER 2021 )**



**Legend**

- District Boundary
- Block Boundary
- Village Boundary
- Major Rivers
- Flood As on 19 Sept 2021

Note :- Heavy Rain Inundated areas in parts of U.P (as on 19 September 2021) received from NRSC/ISRO, Hyderabad.

