

**List of flood affected near by villages in Mau District (U.P.) as on 12th Sept. 2021**

**Flood affected blocks= 3**

**Flood affected villages= 37**

**Flood affected area= 1102 ha.**

S.N.	DISTRICT	BLOCK	VILLAGE	BLOCK	VILLAGE	AFFECTED AREA (in Ha.)	LONGITUDE	LATITUDE
1	<b>MAU</b>	<b>BADRAON</b>	Harghauri	3	37	1102	83°27' 59.796" E	26°13' 25.610" N
2			Chak Bhagawandas				83°27' 21.727" E	26°13' 38.484" N
3		<b>DOHRI GHAT</b>	Rauda Bhagawan Pur				83°32' 10.967" E	26°15' 25.347" N
4			Bibi Pur				83°33' 0.756" E	26°15' 1.993" N
5			Dharm Pur				83°32' 40.155" E	26°15' 15.600" N
6			Zamira Chauradih				83°31' 46.582" E	26°14' 47.661" N
7			Saraso				83°32' 15.715" E	26°14' 55.750" N
8			Korauli				83°32' 42.459" E	26°14' 18.340" N
9			Gontha				83°30' 43.600" E	26°13' 52.817" N
10			Dharmajit Pur				83°29' 23.398" E	26°14' 23.456" N
11			Gorauli				83°29' 37.472" E	26°14' 8.008" N
12			Duhia Diliya				83°35' 8.725" E	26°14' 32.983" N
13			Tahir Pur				83°33' 23.362" E	26°14' 28.448" N
14			Sisawa				83°41' 41.410" E	26°13' 5.685" N
15		<b>FATEHPUR MADAUN</b>	Dharampur Bishunpur				83°43' 2.632" E	26°14' 21.615" N
16			Dubari				83°44' 5.463" E	26°12' 43.043" N
17			Baroha				83°46' 46.198" E	26°13' 33.600" N
18			Kuwarpurwa				83°46' 21.840" E	26°11' 33.710" N
19			Newada Gopalpur				83°46' 4.490" E	26°10' 16.015" N
20			Bhawarupur				83°45' 16.586" E	26°10' 39.062" N
21			Shivrajpur				83°44' 58.624" E	26°10' 27.915" N
22			Ahirupur				83°46' 46.034" E	26°10' 6.237" N
23			Nakahi Dullahpur				83°45' 30.950" E	26°10' 25.710" N
24			Goppur				83°46' 25.318" E	26°10' 20.925" N
25			Talratoy				83°43' 44.273" E	26°9' 26.730" N
26			Jutthipur				83°46' 13.576" E	26°10' 10.738" N
27			Lauasadh				83°46' 24.429" E	26°9' 44.818" N
28			Bhayankarpur				83°45' 38.398" E	26°9' 46.785" N

29			Bairiyadih				83°45' 48.013" E	26°9' 28.089" N
30			Lakhnaur				83°45' 25.600" E	26°8' 46.312" N
31			Haibatpur Talkhadara				83°46' 18.688" E	26°8' 33.082" N
32			Kandhrapur				83°46' 3.377" E	26°8' 29.377" N
33			Molnapur				83°45' 29.744" E	26°13' 35.119" N
34			Musadosi				83°47' 17.827" E	26°11' 50.110" N
35			Chakki Musadohi				83°48' 12.191" E	26°11' 9.869" N
36			Kalayanpur				83°46' 41.410" E	26°9' 16.697" N
37			Rasulpur Adampur Urf R				83°47' 14.508" E	26°8' 7.577" N

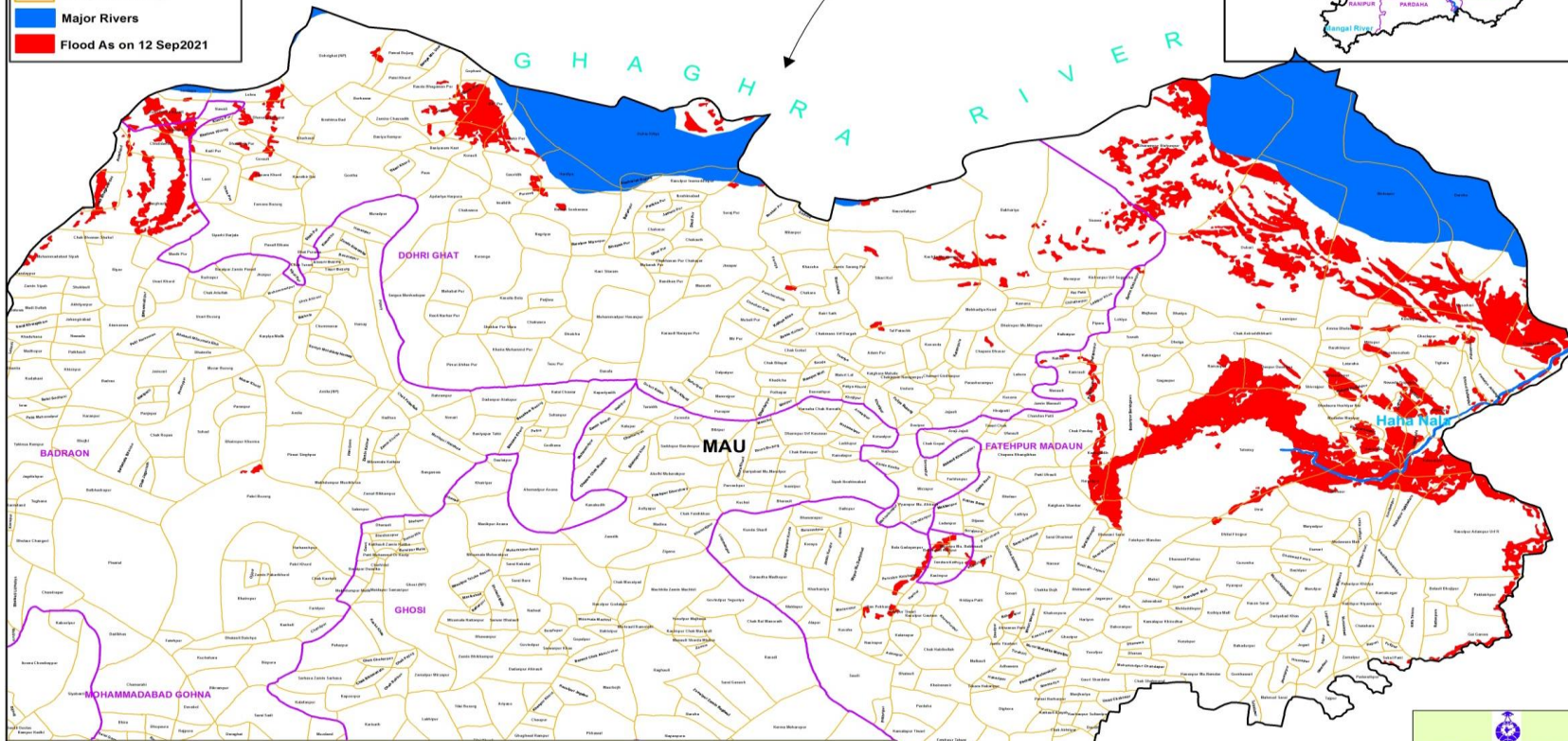
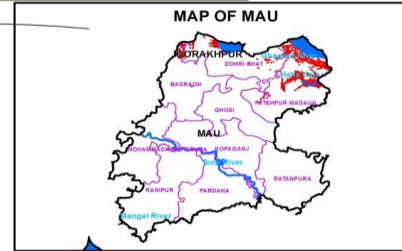
**MAP FOR FLOOD AFFECTED AND WATERLOGGED AREAS ALONG GHAGHRA RIVER IN PARTS OF MAU DISTRICT, U.P.  
( FLOOD AFFECTED AREA 1102 ha. AS ON 12 SEPTEMBER 2021 )**



0 1.25 2.5 5 7.5 10 Kilometers

**Legend**

- District Boundary
- Block Boundary
- Village Boundary
- Major Rivers
- Flood As on 12 Sep2021



Note :- Heavy Rain Inundated areas in parts of U.P ( as on 12 September 2021) received from NRSC/ISRO, Hyderabad.

DISASTER MANAGEMENT CELL, SWRD,  
REMOTE SENSING APPLICATIONS CENTRE - U.P.  
LUCKNOW