

**List of flood affected near by villages in Mau District (U.P.) as on 9th Sept. 2021**

**Flood affected blocks= 4**

**Flood affected villages= 110**

**Flood affected area= 3367 ha.**

S.N.	DISTRICT	BLOCK	VILLAGE	BLOCK	VILLAGE	AFFECTED AREA (in Ha.)	LONGITUDE	LATITUDE
1	MAU	BADRAON	Nawali	4	110	3367	83° 29' 2.001" E	26° 14' 56.842" N
2			Inamidand				83° 28' 28.222" E	26° 14' 38.754" N
3			Chiutidand				83° 28' 6.946" E	26° 14' 23.564" N
4			Auradand				83° 27' 33.101" E	26° 14' 13.950" N
5			Harghauri				83° 27' 59.796" E	26° 13' 25.610" N
6			Chak Bhagawandas				83° 27' 21.727" E	26° 13' 38.484" N
7			Piraut Singhpur				83° 30' 13.740" E	26° 9' 24.359" N
8			Pakri Buzurg				83° 29' 23.057" E	26° 8' 1.952" N
9			Muhammadabad Sipah				83° 26' 41.212" E	26° 12' 34.124" N
10		DOHRI GHAT	Dohrihat (NP)				83° 30' 38.827" E	26° 15' 48.716" N
11			Patnai Bujurg				83° 31' 38.192" E	26° 15' 51.522" N
12			Rauda Bhagawan Pur				83° 32' 10.967" E	26° 15' 25.347" N
13			Bibi Pur				83° 33' 0.756" E	26° 15' 1.993" N
14			Lohra				83° 29' 30.771" E	26° 15' 12.363" N
15			Dharm Pur				83° 32' 40.155" E	26° 15' 15.600" N
16			Sarahara				83° 28' 32.593" E	26° 15' 12.993" N
17			Arazi Deora Nawali				83° 28' 11.519" E	26° 14' 54.281" N
18			Zamira Chauradih				83° 31' 46.582" E	26° 14' 47.661" N
19			Dhanauli Rampur				83° 29' 48.476" E	26° 14' 48.902" N
20			Saraso				83° 32' 15.715" E	26° 14' 55.750" N
21			Korauli				83° 32' 42.459" E	26° 14' 18.340" N
22			Bhainsa Kharag				83° 28' 57.389" E	26° 14' 34.178" N
23			Gontha				83° 30' 43.600" E	26° 13' 52.817" N
24			Dharmajit Pur				83° 29' 23.398" E	26° 14' 23.456" N
25			Kadi Pur				83° 28' 57.458" E	26° 14' 16.524" N
26			Gorauli				83° 29' 37.472" E	26° 14' 8.008" N
27			Farsara Khurd				83° 29' 49.265" E	26° 13' 53.227" N
28			Duhia Diliya				83° 35' 8.725" E	26° 14' 32.983" N

29			Tahir Pur			83° 33' 23.362" E	26° 14' 28.448" N
30			Bakhariya			83° 40' 30.371" E	26° 13' 19.239" N
31			Sisawa			83° 41' 41.410" E	26° 13' 5.685" N
32			Hardiya			83° 34' 7.413" E	26° 13' 54.055" N
33			Gauridih			83° 33' 16.110" E	26° 13' 54.990" N
34			Suraj Pur			83° 36' 32.735" E	26° 13' 16.439" N
35			Nasrullahpur			83° 39' 5.311" E	26° 13' 17.916" N
36			Roshan Pur			83° 37' 7.953" E	26° 13' 22.587" N
37			Belauli Sonbarasa			83° 34' 13.660" E	26° 13' 19.694" N
38			Purmoti			83° 33' 29.847" E	26° 13' 34.485" N
39			Kachila Narayanpur			83° 39' 34.731" E	26° 12' 33.945" N
40			Sikari Kol			83° 38' 50.829" E	26° 12' 9.532" N
41			Khazuha			83° 37' 35.273" E	26° 12' 24.533" N
42			Chakara			83° 37' 31.059" E	26° 11' 59.116" N
43			Mebhadiya Kund			83° 40' 4.950" E	26° 11' 42.715" N
44			Tal Patachh			83° 39' 0.844" E	26° 11' 22.294" N
45			Chapara Dhusar			83° 40' 14.060" E	26° 11' 2.219" N
46			Lakura			83° 40' 41.711" E	26° 10' 40.005" N
47			Farsara Buzurg			83° 29' 43.524" E	26° 13' 25.494" N
48			Siparhi Barjala			83° 29' 8.392" E	26° 12' 54.900" N
49		<b>FATEHPUR MADAUN</b>	Nahila			83° 41' 13.545" E	26° 10' 55.600" N
50			Dharampur Bishunpur			83° 43' 2.632" E	26° 14' 21.615" N
51			Dubari			83° 44' 5.463" E	26° 12' 43.043" N
52			Zamin Kishunpur			83° 42' 17.797" E	26° 12' 2.743" N
53			Amma Bhelaur			83° 45' 20.912" E	26° 11' 24.576" N
54			Narayanpur			83° 41' 44.893" E	26° 11' 2.086" N
55			Ramaupur			83° 43' 31.417" E	26° 10' 48.002" N
56			Kamrauli			83° 41' 30.615" E	26° 10' 42.128" N
57			Baroha			83° 46' 46.198" E	26° 13' 33.600" N
58			Kuwarpurwa			83° 46' 21.840" E	26° 11' 33.710" N
59			Ghaziapur			83° 46' 37.618" E	26° 11' 16.901" N
60			Chauhanpur			83° 47' 15.186" E	26° 11' 4.192" N
61			Mittupur			83° 45' 48.999" E	26° 11' 11.202" N
62			Muradarsahab			83° 46' 9.251" E	26° 11' 2.179" N

63			Tighara			83° 46' 47.898" E	26° 10' 51.175" N
64			Parasiya Jairamgiri			83° 47' 30.546" E	26° 10' 28.188" N
65			Deopur Deosipur			83° 44' 20.924" E	26° 10' 47.154" N
66			Bhirkul Sultanpur			83° 47' 11.335" E	26° 10' 22.634" N
67			Newada Gopalpur			83° 46' 4.490" E	26° 10' 16.015" N
68			Bhawarupur			83° 45' 16.586" E	26° 10' 39.062" N
69			Shivrajpur			83° 44' 58.624" E	26° 10' 27.915" N
70			Ahirupur			83° 46' 46.034" E	26° 10' 6.237" N
71			Patti Dhusar			83° 41' 43.859" E	26° 10' 25.791" N
72			Nakahi Dullahpur			83° 45' 30.950" E	26° 10' 25.710" N
73			Goppur			83° 46' 25.318" E	26° 10' 20.925" N
74			Talratoy			83° 43' 44.273" E	26° 9' 26.730" N
75			Jutthipur			83° 46' 13.576" E	26° 10' 10.738" N
76			Bhadaura Hoshiyar Rai			83° 45' 18.649" E	26° 10' 9.734" N
77			Chak Panday			83° 41' 33.507" E	26° 9' 44.492" N
78			Lauasadh			83° 46' 24.429" E	26° 9' 44.818" N
79			Bhayankarpur			83° 45' 38.398" E	26° 9' 46.785" N
80			Bairiyadih			83° 45' 48.013" E	26° 9' 28.089" N
81			Kaakaradih			83° 41' 47.903" E	26° 9' 24.301" N
82			Lakhnaur			83° 45' 25.600" E	26° 8' 46.312" N
83			Haibatpur Talkhadara			83° 46' 18.688" E	26° 8' 33.082" N
84			Kandhrapur			83° 46' 3.377" E	26° 8' 29.377" N
85			Utraï			83° 44' 9.973" E	26° 8' 30.000" N
86			Dhilai Firojpur			83° 43' 45.531" E	26° 8' 5.071" N
87			Paidaishpur			83° 47' 29.057" E	26° 7' 6.572" N
88			Sukul Patti			83° 46' 5.530" E	26° 6' 4.377" N
89			Sultanpur Barahgawa			83° 42' 10.626" E	26° 9' 56.435" N
90			Harpalpur			83° 41' 42.791" E	26° 8' 56.755" N
91			Katghara Shankar			83° 41' 12.802" E	26° 8' 33.019" N
92			Fatehpur Mandao			83° 42' 23.905" E	26° 7' 59.320" N
93			Bela Gadayanpur			83° 39' 1.098" E	26° 7' 52.429" N
94			Bhawani Sarai			83° 42' 0.514" E	26° 8' 4.469" N
95			Katlauli Mishra			83° 40' 6.478" E	26° 7' 38.313" N
96			Parasiya Kaishapur			83° 38' 54.801" E	26° 7' 23.437" N

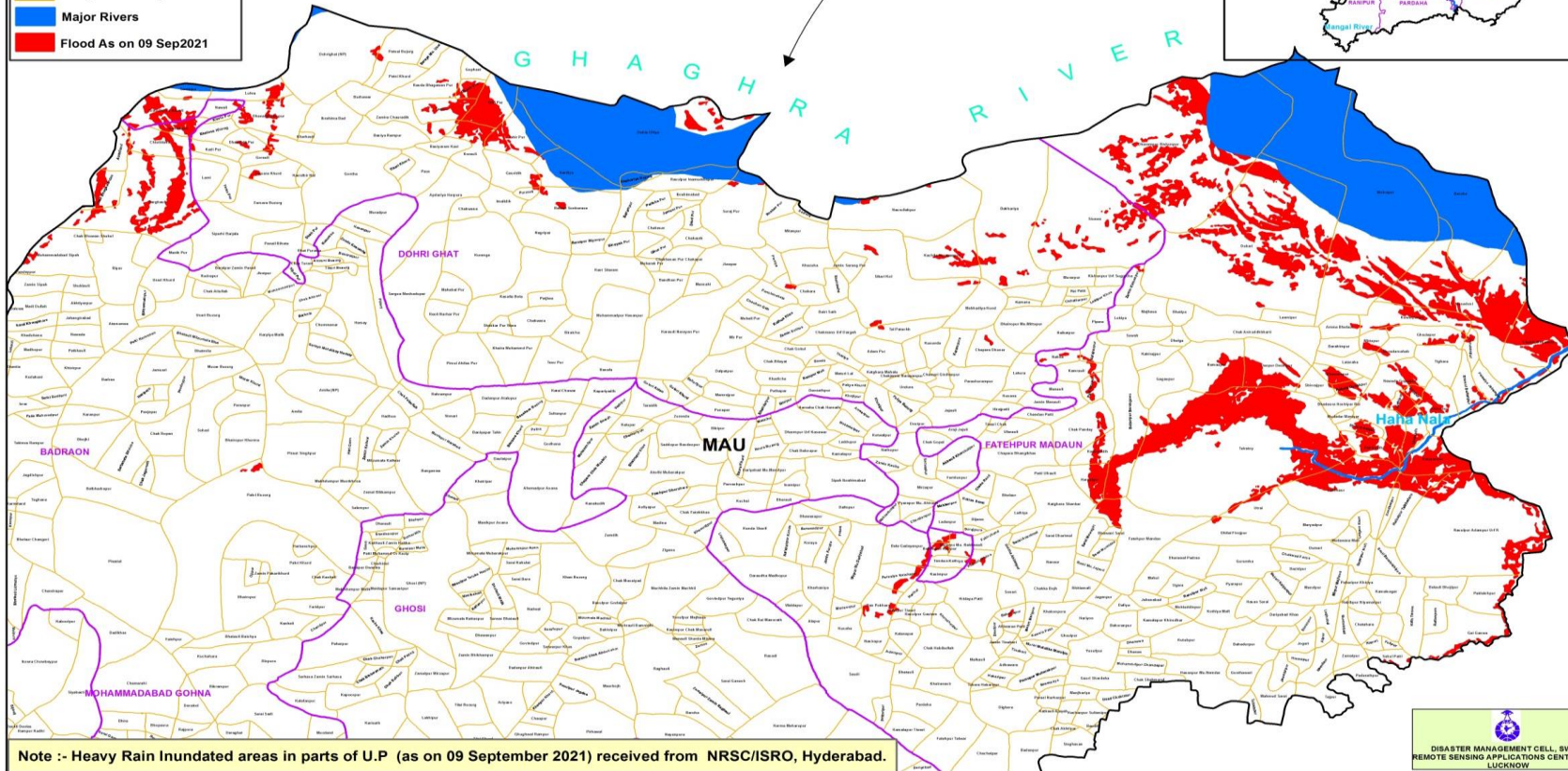
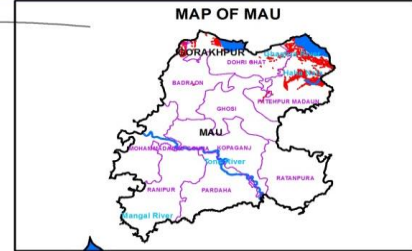
97			Ban Pokhara			83° 38' 37.215" E	26° 6' 52.284" N
98			Bahorikpur			83° 40' 33.557" E	26° 6' 46.875" N
99			Rampur Tiwari			83° 38' 57.851" E	26° 6' 48.788" N
100			Kusaha			83° 38' 9.540" E	26° 6' 32.530" N
101			Molnapur			83° 45' 29.744" E	26° 13' 35.119" N
102			Musadosi			83° 47' 17.827" E	26° 11' 50.110" N
103			Chakki Musadohi			83° 48' 12.191" E	26° 11' 9.869" N
104			Kalayanpur			83° 46' 41.410" E	26° 9' 16.697" N
105			Rasulpur Adampur Urf R			83° 47' 14.508" E	26° 8' 7.577" N
106			Gai Ganwa			83° 47' 7.981" E	26° 6' 28.122" N
107		<b>GHOSI</b>	Jaitpur			83° 39' 29.336" E	26° 8' 2.165" N
108			Murarpu Mu. Babhnauli			83° 39' 48.785" E	26° 7' 53.324" N
109			Babhnauli Kazipur			83° 39' 30.182" E	26° 7' 49.516" N
110			Tendwa Kothiya			83° 39' 37.881" E	26° 7' 37.188" N

**MAP FOR FLOOD AFFECTED AND WATERLOGGED AREAS ALONG GHAGHRA RIVER IN PARTS OF MAU DISTRICT, U.P.  
( FLOOD AFFECTED AREA 3367 ha. AS ON 09 SEPTEMBER 2021 )**



**Legend**

- District Boundary
- Block Boundary
- Village Boundary
- Major Rivers
- Flood As on 09 Sep2021



Note :- Heavy Rain Inundated areas in parts of U.P. (as on 09 September 2021) received from NRSC/ISRO, Hyderabad.

