

List of flood affected near by villages in Maharajganj District (U.P.) as on 9th Sept. 2021

Flood affected blocks=10

Flood affected villages=187

Flood affected area= 3362 ha.

S.N.	DISTRICT	BLOCK	VILLAGE	BLOCK	VILLAGE	AFFECTED AREA (in Ha.)	LONGITUDE	LATITUDE
1	MAHRAJGANJ	Brijmanganj	Gujraulia	10	187	3362	83° 14' 1.953" E	27° 14' 28.709" N
2			Rasoilya				83° 13' 2.296" E	27° 14' 13.330" N
3			Son Bandi				83° 14' 55.099" E	27° 14' 10.563" N
4			Achal Garh				83° 14' 41.785" E	27° 13' 50.894" N
5			Basdila				83° 14' 23.237" E	27° 13' 40.954" N
6			Madrahna				83° 13' 56.352" E	27° 13' 40.937" N
7			Pharenda Range				83° 16' 24.357" E	27° 9' 41.752" N
8			Rajpur Buzurg				83° 15' 12.068" E	27° 17' 6.262" N
9			Raipur Pandit				83° 19' 10.962" E	27° 15' 46.951" N
10			Navadih Khurd				83° 15' 27.976" E	27° 15' 35.307" N
11			Laukahi				83° 14' 51.335" E	27° 15' 30.459" N
12			Mahuari				83° 18' 17.844" E	27° 15' 0.324" N
13			Vishrampur				83° 15' 56.734" E	27° 15' 14.818" N
14			Mahav				83° 15' 16.744" E	27° 14' 57.326" N
15			Gopalpur				83° 15' 49.894" E	27° 14' 23.268" N
16			Sarvadavan Garh				83° 13' 23.747" E	27° 15' 38.899" N
17			Prithvipal Garh				83° 12' 21.506" E	27° 13' 20.634" N
18			Mishrauliya				83° 13' 40.540" E	27° 13' 18.332" N
19			Lehara				83° 15' 5.280" E	27° 11' 2.924" N
20			Shivpur				83° 15' 23.661" E	27° 10' 16.066" N
21			Durgapur				83° 15' 35.420" E	27° 9' 46.821" N
22			Bishunpur Adrauna				83° 15' 20.715" E	27° 8' 56.554" N
23			Bela				83° 10' 47.283" E	27° 12' 53.546" N
24			Harraiya Maulahi				83° 11' 28.077" E	27° 12' 49.614" N
25		Dhani	Bargahpur				83° 14' 6.207" E	27° 9' 48.569" N
26			Ganesh Pur				83° 16' 31.354" E	27° 6' 52.871" N
27			Nirnam Purwi				83° 17' 4.953" E	27° 6' 38.381" N
28			Nirnam Paschami				83° 14' 18.074" E	27° 6' 7.131" N

29			Sidhwari			83° 15' 18.027" E	27° 5' 3.120" N
30			Chhitahi Buzurg			83° 14' 29.849" E	27° 4' 15.376" N
31			Varji			83° 9' 15.492" E	27° 9' 38.163" N
32			Karamaha			83° 11' 5.114" E	27° 9' 8.558" N
33			Pattiwar			83° 8' 50.965" E	27° 9' 20.830" N
34			Rajpur			83° 8' 33.183" E	27° 9' 22.039" N
35			Karkhi			83° 9' 58.612" E	27° 8' 46.450" N
36			Mahdewa			83° 9' 0.748" E	27° 9' 2.267" N
37			Jhagapar			83° 9' 1.461" E	27° 8' 38.271" N
38			Basahwa			83° 9' 59.717" E	27° 8' 14.823" N
39			Raghu Nathpur			83° 8' 17.438" E	27° 9' 26.591" N
40			Belsar			83° 7' 32.796" E	27° 9' 17.279" N
41			Baisar			83° 12' 12.017" E	27° 8' 44.526" N
42			Bardar			83° 13' 27.354" E	27° 8' 45.154" N
43			Gulariha Tappa Lehra			83° 11' 26.482" E	27° 8' 22.938" N
44			Dondhghat			83° 10' 49.577" E	27° 8' 17.076" N
45			Basahiya			83° 10' 26.945" E	27° 8' 21.024" N
46			Rampur			83° 11' 29.845" E	27° 7' 58.334" N
47			Hathigarhwa			83° 12' 42.668" E	27° 7' 41.575" N
48			Dondhghat Tappa Lehra			83° 10' 39.234" E	27° 7' 44.802" N
49			Gulariha Tappa Rinauli			83° 11' 16.941" E	27° 7' 37.074" N
50			Banhaita			83° 9' 58.146" E	27° 7' 38.457" N
51			Bhagarhi			83° 9' 22.900" E	27° 7' 23.209" N
52			Kanapar Urf Ram Nagar			83° 10' 36.171" E	27° 6' 52.872" N
53			Dhani			83° 9' 45.049" E	27° 6' 58.062" N
54			Kamnaha			83° 11' 46.311" E	27° 6' 49.685" N
55			Puranderpur			83° 12' 57.450" E	27° 6' 32.948" N
56			Nagawa			83° 11' 39.587" E	27° 6' 16.476" N
57			Sikandarajitpur			83° 11' 12.168" E	27° 5' 55.556" N
58			Pachrukhi			83° 13' 29.914" E	27° 5' 34.689" N
59			Tal Berha			83° 12' 22.018" E	27° 5' 50.617" N
60			Chauka			83° 8' 57.845" E	27° 6' 37.074" N
61			Dharmdaspur			83° 8' 11.672" E	27° 8' 40.053" N
62			Sikara			83° 8' 42.095" E	27° 8' 17.355" N

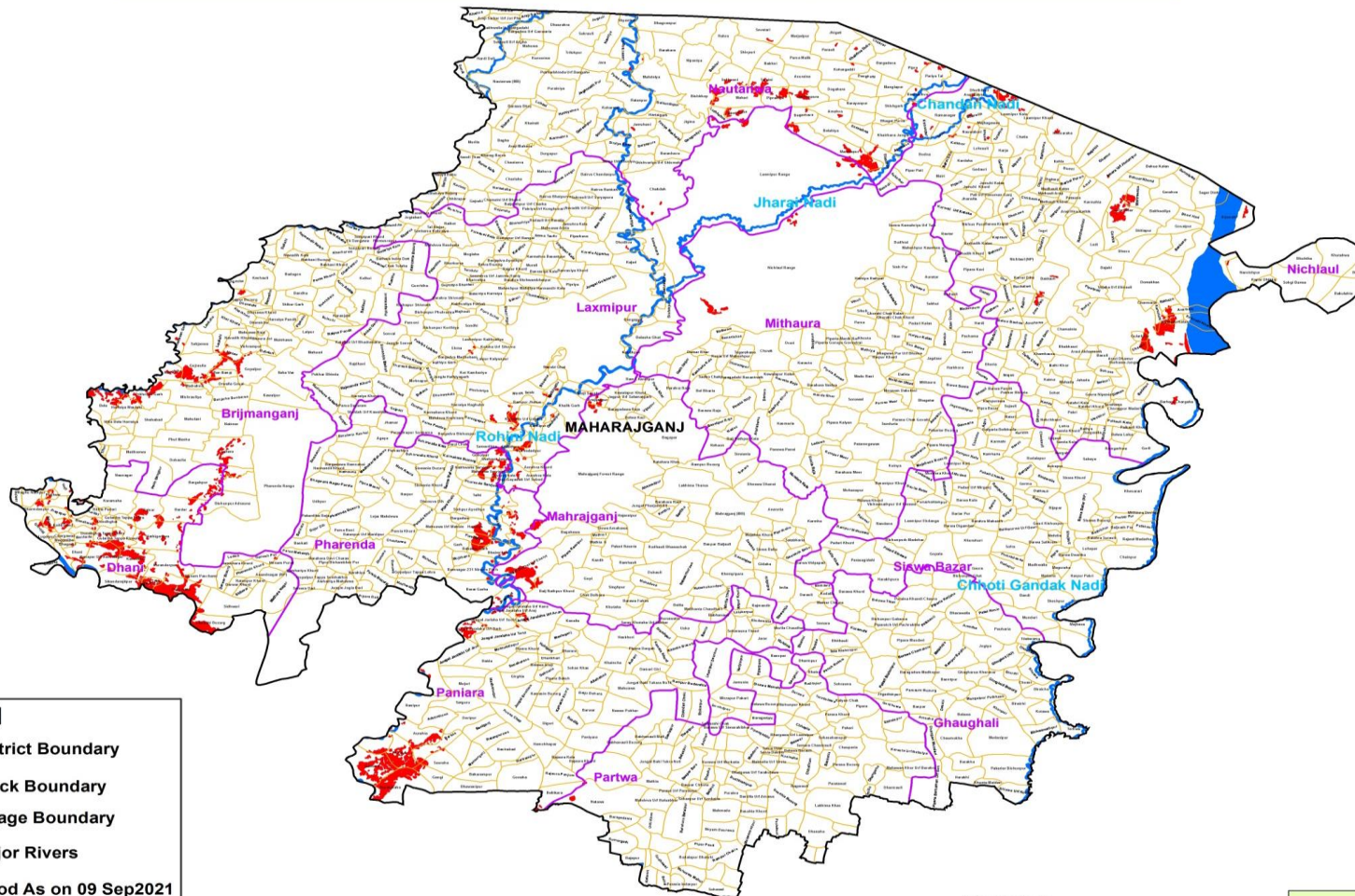
63			Koila Dand			83° 9' 13.067" E	27° 8' 8.406" N
64			Ghivpid			83° 8' 25.385" E	27° 7' 51.898" N
65			Lugaipur			83° 8' 51.795" E	27° 7' 44.617" N
66		Laxmipur	Laxmipur Range			83° 33' 52.028" E	27° 21' 46.785" N
67			Semarhava			83° 30' 21.870" E	27° 19' 17.613" N
68			Dhotihva			83° 29' 19.208" E	27° 19' 22.280" N
69			Kajari			83° 29' 44.616" E	27° 18' 35.777" N
70			Gangapur			83° 29' 39.470" E	27° 16' 18.741" N
71			Terhi			83° 30' 8.817" E	27° 16' 14.692" N
72			Laxmipur Range			83° 27' 42.012" E	27° 15' 40.179" N
73			Laxhmipur Kaithvaliya			83° 24' 14.255" E	27° 15' 31.437" N
74			Ekma			83° 23' 20.254" E	27° 15' 13.018" N
75			Bhotaha			83° 26' 32.132" E	27° 14' 4.744" N
76			Bargadva Madhubani			83° 23' 59.261" E	27° 14' 49.312" N
77			Navabi Ghat			83° 26' 59.723" E	27° 14' 25.538" N
78			Mathiyaidu			83° 26' 46.503" E	27° 13' 27.013" N
79			Manik Talab			83° 25' 45.147" E	27° 13' 22.849" N
80			Araji Suvain			83° 28' 3.105" E	27° 13' 23.135" N
81			Rampur Jhalua			83° 25' 39.659" E	27° 12' 48.722" N
82			Bhagvanpur			83° 24' 44.987" E	27° 12' 42.742" N
83			Rajapur			83° 26' 22.128" E	27° 12' 34.188" N
84			Kodaipur Urf Gidaha			83° 25' 45.846" E	27° 12' 21.506" N
85			Basantpur			83° 24' 51.958" E	27° 11' 58.489" N
86			Gauharpur			83° 26' 51.457" E	27° 11' 55.381" N
87			Samardhira			83° 24' 20.834" E	27° 11' 27.968" N
88			Raghunath Pur			83° 25' 27.670" E	27° 11' 41.447" N
89			Bhagvanpur			83° 25' 41.025" E	27° 11' 26.574" N
90			Karimdadpur			83° 25' 55.534" E	27° 11' 10.228" N
91			Chandpur			83° 25' 14.363" E	27° 11' 12.466" N
92			Devipur			83° 25' 35.792" E	27° 10' 44.800" N
93			Araji Gayadatt Urf Subed			83° 25' 34.089" E	27° 9' 57.555" N
94		Mahrajanj	Jagpur Urf Salamatgarh			83° 28' 53.011" E	27° 13' 14.702" N
95			Arajijagpur			83° 28' 23.928" E	27° 13' 6.374" N
96			Mahrajanj Forest Range			83° 28' 14.742" E	27° 10' 10.445" N

97			Jungal Dudhai Urf Chehri			83° 25' 50.206" E	27° 6' 26.069" N
98			Baij Nathpur Khurd			83° 26' 53.012" E	27° 5' 40.238" N
99		Mithaura	Nichlaul Range			83° 35' 12.114" E	27° 18' 22.651" N
100		Nautanwa	Sevatari			83° 34' 18.089" E	27° 27' 51.735" N
101			Khairhva Dube			83° 37' 47.425" E	27° 26' 56.669" N
102			Parauli			83° 36' 43.360" E	27° 27' 1.999" N
103			Pipra			83° 39' 42.114" E	27° 26' 19.322" N
104			Kohargaddi			83° 37' 4.621" E	27° 26' 14.988" N
105			Pariya Tal			83° 40' 27.219" E	27° 25' 56.789" N
106			Taraini			83° 34' 23.725" E	27° 25' 48.288" N
107			Ramgarhva			83° 39' 46.767" E	27° 25' 15.597" N
108			Bishunpura			83° 35' 51.371" E	27° 25' 11.234" N
109			Mahari			83° 33' 27.006" E	27° 25' 5.184" N
110			Piprahiya			83° 34' 48.276" E	27° 25' 7.046" N
111			Shishgarh			83° 39' 0.635" E	27° 24' 45.894" N
112			Amahva			83° 36' 49.607" E	27° 24' 35.217" N
113			Sagarhava			83° 35' 42.544" E	27° 24' 25.170" N
114			Ghorahava			83° 33' 26.496" E	27° 24' 31.177" N
115			Khairhava Jungal			83° 38' 53.411" E	27° 23' 38.692" N
116			Ganeshpur			83° 35' 50.397" E	27° 23' 44.716" N
117			Manikapur			83° 37' 27.603" E	27° 22' 56.558" N
118			Sihabhar			83° 38' 30.643" E	27° 22' 35.388" N
119			Laxmi Nagar			83° 29' 26.777" E	27° 27' 1.713" N
120			Mahdeiya			83° 30' 25.228" E	27° 25' 57.543" N
121			Sekhuani			83° 33' 3.673" E	27° 25' 50.577" N
122			Parsa Somali			83° 29' 13.246" E	27° 25' 47.926" N
123			Bishkhop			83° 31' 50.345" E	27° 25' 14.376" N
124			Ratanpur			83° 29' 45.132" E	27° 25' 1.752" N
125			Koharwal			83° 28' 38.980" E	27° 24' 46.186" N
126			Luthhahva			83° 32' 41.727" E	27° 24' 29.609" N
127			Purushottampur			83° 29' 14.247" E	27° 23' 59.085" N
128			Jamuhani			83° 29' 55.570" E	27° 23' 59.018" N
129			Sirsiya Khas			83° 29' 12.699" E	27° 23' 16.294" N
130			Siswa Urf Khoriya			83° 29' 8.559" E	27° 22' 37.208" N

131			Chakdah			83° 30' 34.856" E	27° 21' 30.087" N
132		Nichlaul	Dhuthibari			83° 41' 46.069" E	27° 25' 15.156" N
133			Laxmipur Kala			83° 43' 18.474" E	27° 24' 46.737" N
134			Araji Bairia			83° 41' 52.503" E	27° 25' 2.456" N
135			Ramanagar			83° 40' 43.004" E	27° 24' 35.347" N
136			Bharwlia			83° 41' 59.507" E	27° 24' 28.404" N
137			Kishunpur			83° 39' 59.990" E	27° 23' 56.398" N
138			Khesaraha			83° 45' 3.064" E	27° 23' 43.314" N
139			Basantpur			83° 41' 32.508" E	27° 23' 53.149" N
140			Sovar			83° 40' 43.902" E	27° 23' 43.532" N
141			Naunia			83° 42' 14.918" E	27° 23' 37.968" N
142			Katkhor			83° 41' 18.266" E	27° 23' 17.872" N
143			Amara Urf Jhulanipur			83° 47' 10.483" E	27° 22' 25.559" N
144			Nichlaul Range			83° 47' 6.617" E	27° 16' 23.162" N
145			Gular Bhar			83° 47' 9.125" E	27° 20' 45.297" N
146			Mishrawalia			83° 47' 45.236" E	27° 21' 12.605" N
147			Baidauli			83° 44' 33.370" E	27° 17' 56.131" N
148			Kathaya			83° 48' 46.967" E	27° 17' 2.242" N
149			Amu Talab			83° 44' 9.676" E	27° 16' 48.200" N
150			Karvatahi			83° 48' 30.618" E	27° 16' 26.812" N
151			Auarahia			83° 49' 25.822" E	27° 16' 41.847" N
152			Kalanahi Kalan			83° 49' 5.683" E	27° 16' 22.713" N
153			Gularbhar			83° 47' 48.930" E	27° 15' 39.296" N
154			Chanda			83° 47' 47.621" E	27° 15' 12.154" N
155			Arjunahi			83° 50' 57.366" E	27° 20' 23.121" N
156			Narsinhpur			83° 51' 36.795" E	27° 18' 10.791" N
157			Barhara Chargaha			83° 49' 7.994" E	27° 13' 0.920" N
158		Paniara	Jungla Jaralaha Urf Anan			83° 26' 19.070" E	27° 4' 28.931" N
159			Jungla Jaralaha Urf Kana			83° 25' 40.125" E	27° 4' 47.614" N
160			Jungla Jaralaha Urf Suchi			83° 24' 43.433" E	27° 4' 23.164" N
161			Jungla Jaralaha Urf Barh			83° 23' 47.680" E	27° 4' 1.037" N
162			Jungla Jaralaha Urf Tend			83° 24' 58.265" E	27° 3' 43.216" N
163			Laxmipur			83° 22' 31.408" E	27° 2' 3.618" N
164			Arbarahawa			83° 22' 38.574" E	27° 0' 28.737" N

165			Aurahia			83° 21' 53.589" E	26° 59' 51.936" N
166			Barbas			83° 22' 32.108" E	26° 59' 20.924" N
167			Ahirauli			83° 21' 19.663" E	26° 59' 6.054" N
168			Harakhpura			83° 20' 26.612" E	26° 59' 26.615" N
169			Domara			83° 20' 12.404" E	26° 58' 33.644" N
170			Sauraha			83° 22' 51.588" E	26° 58' 41.365" N
171			Gangi			83° 22' 31.108" E	26° 58' 6.993" N
172			Beltikara			83° 26' 50.432" E	26° 57' 27.239" N
173			Narakataha			83° 21' 17.503" E	26° 57' 46.353" N
174		Partwa	Natawa			83° 28' 39.556" E	26° 57' 14.292" N
175		Pharenda	Shahpur Jungle			83° 24' 45.335" E	27° 10' 46.507" N
176			Mahuawa Sarvjeet			83° 24' 27.310" E	27° 10' 16.544" N
177			Pharenda Sarvjeet			83° 24' 16.392" E	27° 9' 47.127" N
178			Pharenda Range			83° 25' 42.462" E	27° 8' 22.683" N
179			Bhagwanpur			83° 24' 56.271" E	27° 9' 7.498" N
180			Jalalgarh			83° 24' 47.440" E	27° 8' 16.627" N
181			Harraiya			83° 24' 1.918" E	27° 8' 4.722" N
182			Panditpur			83° 23' 58.337" E	27° 7' 37.877" N
183			Bhainsihya			83° 24' 52.050" E	27° 7' 4.756" N
184			Bahadur Garh			83° 23' 59.257" E	27° 7' 13.620" N
185			Ramnagar 231 Nirnam Pach			83° 24' 0.459" E	27° 6' 22.153" N
186			Jhawakot			83° 25' 7.361" E	27° 5' 20.049" N
187			Barat Garha			83° 23' 56.084" E	27° 5' 35.570" N

MAP FOR FLOOD AFFECTED AND WATERLOGGED AREAS ALONG ROHINI AND RAPTI RIVERS IN PARTS OF MAHARAJGANJ DISTRICT, U.P.
 (FLOOD AFFECTED AREA 3362 ha. AS ON 09 SEPTEMBER 2021)



Legend

- District Boundary
- Block Boundary
- Village Boundary
- Major Rivers
- Flood As on 09 Sep2021

Note :- Heavy Rain Inundated areas in parts of U.P (as on 09 Septembert 2021) received from NRSC/ISRO, Hyderabad.

