

**List of flood affected near by villages in Siddharthnagar District (U.P.) as on 1st Sept. 2021**

**Flood affected blocks=12**

**Flood affected villages=628**

**Flood affected area= 28077 ha.**

S.N.	DISTRICT	BLOCK	VILLAGE	BLOCK	VILLAGE	AFFECTED AREA ( in Ha.)	LONGITUDE	LATITUDE
1	<b>SIDDHARTH NAGAR</b>	<b>BANSI</b>	Bahorawaghat	12	628	28077	82° 55' 45.158" E	27° 16' 46.846" N
2			Chetia				82° 54' 7.176" E	27° 15' 1.969" N
3			Asidhawa				82° 54' 37.439" E	27° 15' 23.232" N
4			Tighara				82° 55' 10.386" E	27° 15' 19.960" N
5			Subhauri				82° 56' 9.044" E	27° 16' 16.097" N
6			Mahuwari				82° 56' 30.612" E	27° 16' 23.659" N
7			Sirsia Tiwari				82° 56' 29.754" E	27° 15' 46.945" N
8			Narkatha				82° 57' 3.638" E	27° 15' 6.113" N
9			Satwari				82° 57' 18.980" E	27° 14' 43.546" N
10			Bhagautapur				82° 58' 40.891" E	27° 14' 15.293" N
11			Daria				82° 58' 0.410" E	27° 14' 22.383" N
12			Kathaihi				82° 59' 51.598" E	27° 13' 55.355" N
13			Balua				82° 57' 44.483" E	27° 13' 58.416" N
14			Nagwa				82° 58' 24.608" E	27° 13' 54.821" N
15			Suparaja				82° 59' 15.267" E	27° 13' 34.411" N
16			Supaghat				83° 0' 5.602" E	27° 13' 22.058" N
17			Kamharia Buzurg				82° 58' 8.685" E	27° 13' 29.216" N
18			Supabaxi				82° 59' 0.081" E	27° 13' 17.184" N
19			Tekapar				82° 59' 41.748" E	27° 13' 4.193" N
20			Babhnital				82° 58' 45.887" E	27° 12' 50.200" N
21			Murila Raja				82° 59' 45.621" E	27° 12' 32.041" N
22			Tarwal Ghat				83° 1' 13.214" E	27° 11' 44.202" N
23			Phulpur				83° 0' 41.638" E	27° 11' 55.612" N
24			Bhanawari				83° 0' 29.059" E	27° 11' 20.179" N
25			Bhujrai				83° 1' 5.318" E	27° 10' 50.251" N
26			Datrangwa				83° 1' 39.284" E	27° 11' 3.359" N
27			Hata Khurd				83° 2' 7.266" E	27° 10' 13.700" N
28			Kakrahwa				82° 51' 1.415" E	27° 15' 10.481" N

29			Ajgara				82° 52' 21.383" E	27° 14' 28.389" N
30			Jamla Jot				82° 51' 34.969" E	27° 14' 12.902" N
31			Sekhuia				82° 52' 4.028" E	27° 14' 2.394" N
32			Rehra				82° 53' 4.568" E	27° 13' 48.069" N
33			Pachhari Khas				82° 50' 29.846" E	27° 13' 53.875" N
34			Barharghat				82° 54' 5.006" E	27° 13' 48.294" N
35			Sukrauli				82° 53' 40.933" E	27° 13' 43.684" N
36			Babhanighat				82° 52' 25.326" E	27° 13' 42.425" N
37			Tiwaripur				82° 50' 12.733" E	27° 13' 19.771" N
38			Mahua Kalan				82° 51' 11.889" E	27° 13' 25.912" N
39			Akoliha				82° 52' 47.739" E	27° 13' 23.083" N
40			Darawatakia				82° 48' 41.001" E	27° 13' 27.300" N
41			Baraon Nankar				82° 49' 22.338" E	27° 13' 11.637" N
42			Nihalwa				82° 53' 48.458" E	27° 13' 15.907" N
43			Pipri				82° 50' 41.956" E	27° 13' 17.122" N
44			Vishunpur				82° 52' 21.991" E	27° 13' 11.558" N
45			Nathua Jot				82° 48' 45.717" E	27° 13' 9.169" N
46			Bargadawa				82° 53' 12.799" E	27° 13' 8.294" N
47			Khajuria				82° 51' 38.296" E	27° 13' 2.761" N
48			Manoharpur				82° 52' 37.434" E	27° 13' 0.215" N
49			Mahua Khurd				82° 51' 5.105" E	27° 12' 56.706" N
50			Rainajot				82° 53' 25.291" E	27° 12' 52.541" N
51			Jajar Gathia				82° 52' 0.188" E	27° 12' 46.270" N
52			Son Ferwa Khurd				82° 49' 55.423" E	27° 12' 51.369" N
53			Purwa				82° 53' 53.182" E	27° 12' 51.470" N
54			Darhawa Dhandi				82° 50' 16.049" E	27° 12' 41.607" N
55			Atramu Nankar				82° 52' 38.988" E	27° 12' 32.788" N
56			Jiwpur				82° 49' 10.102" E	27° 12' 38.002" N
57			Kishundhar Jot				82° 53' 9.523" E	27° 12' 35.882" N
58			Sri Belwa				82° 50' 36.092" E	27° 12' 33.224" N
59			Mau				82° 51' 55.331" E	27° 12' 3.768" N
60			Darhwa Adhin				82° 50' 55.034" E	27° 12' 31.742" N
61			Pipra				82° 51' 1.930" E	27° 12' 21.323" N
62			Ramwapur				82° 49' 40.201" E	27° 12' 31.183" N

63			Majhwan Khurd				82° 53' 34.641" E	27° 12' 31.229" N
64			Darawa Lal				82° 50' 11.621" E	27° 12' 18.178" N
65			Tal Bhagniya				82° 52' 37.533" E	27° 12' 11.651" N
66			Chetia				82° 48' 58.446" E	27° 12' 3.939" N
67			Sekhui				82° 49' 38.885" E	27° 12' 2.862" N
68			Sihoria				82° 51' 13.762" E	27° 12' 5.395" N
69			Kolhui Buzurg				82° 50' 39.229" E	27° 11' 40.181" N
70			Kolhua				82° 50' 12.993" E	27° 11' 46.699" N
71			Majhari				82° 51' 20.614" E	27° 11' 39.553" N
72			Kolhui Khurd				82° 49' 25.589" E	27° 11' 32.336" N
73			Tagalakpur				82° 49' 49.151" E	27° 11' 39.202" N
74			Rma Tikra				82° 48' 59.088" E	27° 10' 55.358" N
75			Mechuka				82° 51' 52.583" E	27° 11' 10.540" N
76			Mandhara Pur				82° 51' 1.539" E	27° 11' 16.121" N
77			Amghati				82° 50' 3.440" E	27° 11' 15.387" N
78			Bale Jinwa				82° 49' 27.235" E	27° 11' 7.627" N
79			Bhainsath				82° 50' 17.881" E	27° 10' 59.772" N
80			Jalhe Khor				82° 51' 13.006" E	27° 10' 37.568" N
81			Magargaha				82° 49' 50.332" E	27° 10' 34.737" N
82			Bimauwa Khurd				82° 50' 38.467" E	27° 10' 40.855" N
83			Bimauwa Buzurg				82° 50' 22.485" E	27° 10' 17.308" N
84			Majhwan Kalna				82° 53' 24.051" E	27° 12' 15.702" N
85			Miya Jot				82° 53' 45.189" E	27° 12' 10.564" N
86			Gothawa				82° 53' 9.055" E	27° 11' 49.162" N
87			Harha				82° 52' 40.907" E	27° 11' 40.331" N
88			Telaura				82° 52' 38.318" E	27° 10' 58.369" N
89			Darwa Ghat				82° 51' 53.387" E	27° 10' 39.366" N
90			Banauli				82° 52' 23.002" E	27° 10' 28.221" N
91			Ganwaria				82° 57' 50.651" E	27° 13' 8.389" N
92			Gulriha Raja				82° 59' 22.258" E	27° 11' 58.997" N
93			Bakunaw				83° 0' 8.072" E	27° 11' 53.237" N
94			Bhagautapur				82° 59' 0.978" E	27° 11' 28.770" N
95			Bandhwatal				82° 59' 39.965" E	27° 10' 44.720" N
96			Azama Garh				82° 59' 56.611" E	27° 11' 2.529" N

97			Harraia Nankar				82° 58' 56.095" E	27° 10' 39.075" N
98			Bharsartal				83° 0' 16.138" E	27° 10' 26.005" N
99			Pakardiha				83° 1' 15.898" E	27° 10' 14.606" N
100			Gonhadih				82° 59' 43.664" E	27° 10' 2.622" N
101			Hata Khas				83° 1' 44.554" E	27° 9' 21.659" N
102			Madrahna Misir				83° 0' 36.256" E	27° 9' 20.878" N
103			Gonhatal				82° 59' 54.416" E	27° 9' 21.735" N
104			Narayanpur				82° 55' 30.057" E	27° 15' 2.449" N
105			Nawaila				82° 56' 32.503" E	27° 14' 58.875" N
106			Dasia				82° 54' 56.636" E	27° 14' 40.291" N
107			Pipra				82° 55' 52.929" E	27° 14' 44.513" N
108			Chandegaria				82° 55' 30.874" E	27° 14' 39.308" N
109			Imlidiha				82° 55' 12.388" E	27° 14' 25.131" N
110			Bihra				82° 56' 15.409" E	27° 14' 15.417" N
111			Gharhara				82° 55' 52.942" E	27° 14' 29.302" N
112			Kodri Khas				82° 57' 11.511" E	27° 14' 10.819" N
113			Semra				82° 55' 38.509" E	27° 14' 12.861" N
114			Barhi Urf Misraulia				82° 56' 44.249" E	27° 14' 8.388" N
115			Chanwartal				82° 55' 56.252" E	27° 13' 30.849" N
116			Marcha				82° 56' 22.168" E	27° 13' 50.772" N
117			Taragujraulia				82° 56' 57.675" E	27° 13' 35.755" N
118			Gonhatal				82° 54' 38.253" E	27° 13' 19.370" N
119			Kamharia Khurd				82° 57' 31.282" E	27° 13' 32.681" N
120			Hayat Nagar				82° 55' 46.434" E	27° 13' 2.771" N
121			Janiajot				82° 56' 32.438" E	27° 12' 49.410" N
122			Bhakurahwa				82° 54' 30.319" E	27° 12' 40.204" N
123			Tirlokpur				82° 57' 3.495" E	27° 12' 25.036" N
124			Sonkhar				82° 58' 5.319" E	27° 12' 9.297" N
125			Natahawa				82° 55' 29.403" E	27° 12' 35.619" N
126			Bopalapur				82° 56' 17.505" E	27° 12' 12.969" N
127			Basantpur				82° 55' 18.491" E	27° 12' 9.807" N
128			Bansi (MB)				82° 55' 45.934" E	27° 11' 15.558" N
129			Kataha				82° 54' 29.353" E	27° 11' 13.830" N
130			Kadmahwa				82° 58' 43.963" E	27° 9' 57.518" N

131			Kushalpur				82° 59' 1.124" E	27° 10' 6.961" N
132			Madhwapur				82° 59' 18.189" E	27° 9' 58.052" N
133		<b>BARHNI BAZAR</b>	Pakanihawa				82° 46' 12.005" E	27° 25' 31.883" N
134			Ganrakha				82° 52' 6.451" E	27° 25' 32.543" N
135			Roman Dai				82° 53' 8.070" E	27° 25' 22.054" N
136			Khairhaniya Urf Banarahi				82° 52' 33.140" E	27° 24' 44.942" N
137			Akarahara				82° 46' 56.075" E	27° 26' 22.987" N
138			Pathar Deia				82° 45' 54.045" E	27° 26' 7.461" N
139			Khajuriya Sarki				82° 47' 28.369" E	27° 26' 43.417" N
140			Sisawa Urf Shiv Bhari				82° 48' 9.002" E	27° 26' 26.206" N
141			Tal Kunda				82° 49' 16.143" E	27° 25' 47.411" N
142			Manikaura				82° 51' 1.053" E	27° 25' 43.221" N
143			Rekahat				82° 47' 19.804" E	27° 25' 23.327" N
144			Mohan Koli				82° 51' 33.610" E	27° 24' 50.920" N
145			Matiyar Urf Bhutahwa				82° 50' 39.584" E	27° 24' 47.123" N
146			Semari Urf Gulargajawa				82° 47' 48.035" E	27° 24' 59.851" N
147			Tikar				82° 49' 58.952" E	27° 24' 36.182" N
148			Khairi Shital Prasad				82° 49' 0.980" E	27° 24' 42.843" N
149			Khairi Urf Bhujahawa				82° 51' 10.983" E	27° 23' 32.063" N
150			Khaira				82° 52' 24.444" E	27° 24' 4.659" N
151			Dhanaura Kashi Prasad				82° 52' 44.120" E	27° 23' 36.334" N
152			Ram Nagar				82° 46' 35.876" E	27° 24' 39.257" N
153			Mahadeya				82° 52' 38.316" E	27° 23' 7.094" N
154			Taulihawa				82° 51' 44.851" E	27° 22' 15.235" N
155			Raja Koha Urf Pratappur				82° 52' 35.690" E	27° 22' 25.384" N
156		<b>BHANWAPUR</b>	Denghar				82° 33' 34.280" E	27° 23' 17.060" N
157			Nawdih				82° 30' 6.859" E	27° 21' 19.749" N
158			Arjunpur				82° 29' 34.460" E	27° 20' 31.025" N
159			Sigar Jot Mustahkam				82° 29' 2.403" E	27° 19' 34.623" N
160			Sigar Jot Ahatmali				82° 29' 25.767" E	27° 19' 23.037" N
161			Bauna Jot				82° 31' 18.524" E	27° 18' 54.791" N

162		Bisunpur Awrangabad				82° 29' 57.670" E	27° 18' 23.741" N
163		Dariya Baksh Urf Bhag Nag				82° 29' 42.198" E	27° 17' 51.555" N
164		Judi Kuiya				82° 30' 57.674" E	27° 17' 45.612" N
165		Bhiura				82° 35' 29.740" E	27° 23' 54.385" N
166		Sikra Khurd				82° 35' 8.706" E	27° 23' 16.662" N
167		Patwariya				82° 34' 46.365" E	27° 23' 15.262" N
168		Devipur				82° 34' 26.751" E	27° 22' 43.661" N
169		Rohawn Bujurg				82° 31' 21.915" E	27° 20' 22.059" N
170		Kurthi Diha				82° 30' 34.499" E	27° 20' 49.209" N
171		Shital Bhita				82° 31' 3.215" E	27° 20' 48.469" N
172		Sikanderpur				82° 30' 6.237" E	27° 20' 40.086" N
173		Dakhinahwa				82° 30' 6.121" E	27° 20' 14.403" N
174		Gangapur				82° 30' 50.397" E	27° 19' 29.611" N
175		Manikaura Manikauri				82° 31' 18.095" E	27° 19' 41.290" N
176		Gulariha				82° 31' 39.939" E	27° 19' 28.614" N
177		Ijarahwa				82° 32' 6.060" E	27° 18' 57.763" N
178		Mohamadpur				82° 31' 40.344" E	27° 18' 27.838" N
179		Ratanpur				82° 32' 45.383" E	27° 18' 32.583" N
180		Oinia				82° 32' 33.814" E	27° 18' 2.775" N
181		Vijaura				82° 30' 52.381" E	27° 18' 23.806" N
182		Belwa				82° 31' 17.965" E	27° 18' 7.373" N
183		Asharhi				82° 31' 44.122" E	27° 17' 43.369" N
184		Khanta				82° 30' 31.357" E	27° 17' 29.082" N
185		Jeruia				82° 32' 9.010" E	27° 17' 18.869" N
186		Sakhuya Sanapati				82° 31' 11.812" E	27° 17' 13.758" N
187		Lugra Diha				82° 31' 34.707" E	27° 17' 5.685" N
188		Bishunpur Hari				82° 31' 57.035" E	27° 16' 51.476" N
189		Batnar Ahthmali				82° 29' 52.428" E	27° 17' 3.334" N
190		Batnar Mustacum				82° 30' 27.132" E	27° 16' 55.045" N
191		Jahda Mustahkam				82° 30' 39.905" E	27° 15' 39.356" N
192		Ramwapur Jagatram				82° 31' 8.287" E	27° 16' 9.720" N
193		Keshwa Jot Ahatmali				82° 30' 57.081" E	27° 16' 13.927" N
194		Gopia				82° 31' 24.986" E	27° 14' 42.154" N

195			Chitahi				82° 33' 28.343" E	27° 15' 6.746" N
196			Tarhar				82° 32' 32.195" E	27° 14' 53.504" N
197			Siswa				82° 32' 33.117" E	27° 14' 17.491" N
198			Parsohia Sadanand				82° 30' 22.871" E	27° 14' 23.785" N
199			Jokha				82° 30' 56.960" E	27° 14' 4.173" N
200			Bikramjot				82° 30' 44.603" E	27° 14' 22.499" N
201			Rauth Dila Musthacum				82° 31' 21.915" E	27° 13' 58.118" N
202			Sisa				82° 32' 0.896" E	27° 14' 18.483" N
203			Bamdaye				82° 31' 27.605" E	27° 14' 11.678" N
204			Durga Joot				82° 31' 49.389" E	27° 13' 58.653" N
205			Rauth Diha Ahtamali				82° 31' 28.570" E	27° 13' 47.226" N
206			Maldha				82° 34' 9.849" E	27° 14' 27.098" N
207			Davariya Chaman				82° 33' 21.900" E	27° 14' 24.793" N
208			Semari				82° 34' 52.645" E	27° 14' 21.227" N
209			Semari Ban Casya				82° 35' 21.487" E	27° 13' 58.660" N
210			Kathonia Pandey				82° 32' 57.935" E	27° 13' 58.391" N
211			Davalidiha Misir (610 No				82° 34' 31.910" E	27° 13' 47.838" N
212			Davliidiha Chaubey				82° 33' 32.911" E	27° 13' 45.349" N
213			Dhanohari				82° 37' 27.091" E	27° 13' 34.463" N
214			Madhukarpur Chaubey				82° 33' 59.854" E	27° 13' 45.897" N
215			Vijwar Barhai				82° 36' 40.334" E	27° 13' 17.765" N
216			Junayaniya				82° 32' 34.353" E	27° 13' 32.032" N
217			Andua Snichara				82° 35' 25.529" E	27° 13' 14.156" N
218			Tatari				82° 34' 48.747" E	27° 13' 5.715" N
219			Tanduai				82° 33' 33.372" E	27° 13' 11.228" N
220			Badaya				82° 34' 11.069" E	27° 13' 13.575" N
221			Bilriya				82° 34' 22.683" E	27° 12' 46.622" N
222			Kohal Kundak				82° 33' 26.186" E	27° 12' 44.411" N
223			Padriya Jeet				82° 33' 54.923" E	27° 12' 47.142" N
224			Budihya Tayar				82° 35' 7.933" E	27° 12' 32.216" N
225			Bewa Mustancum				82° 31' 47.559" E	27° 13' 24.571" N
226			Parsohiya Tiwari				82° 30' 41.435" E	27° 20' 6.800" N
227			Saphipur				82° 30' 6.617" E	27° 19' 40.015" N

228			Madhucarpur Jagatram				82° 31' 21.502" E	27° 16' 37.728" N
229			Puraina				82° 30' 47.097" E	27° 16' 31.872" N
230			Kashwa Jot Mustacum				82° 30' 43.835" E	27° 16' 15.056" N
231			Lelsara Nankar				82° 31' 30.476" E	27° 15' 35.521" N
232			Veerpur Jootfata Mohmad				82° 33' 55.664" E	27° 12' 14.315" N
233			Veerpurjoot Fateh Mohamad				82° 33' 19.654" E	27° 12' 4.346" N
234			Sirsia				82° 38' 6.527" E	27° 13' 34.553" N
235			Shahpur Ahatmali				82° 39' 17.377" E	27° 13' 11.586" N
236			Ramwapur Urf Nabua Ahtmal				82° 38' 30.345" E	27° 12' 52.507" N
237			Khurphahwa				82° 36' 5.670" E	27° 12' 55.029" N
238			Shahpur Mustakmm				82° 39' 52.215" E	27° 12' 47.473" N
239			Padari Ahtmali				82° 37' 24.170" E	27° 12' 46.438" N
240			Dhnohara				82° 37' 57.064" E	27° 12' 48.760" N
241			Machiya Ahatmali				82° 36' 43.774" E	27° 12' 36.635" N
242			Rudauliya				82° 35' 45.033" E	27° 12' 22.818" N
243			Fatehpur				82° 36' 14.267" E	27° 12' 21.316" N
244			Ramwapur/Nabuya Musthahca				82° 38' 3.295" E	27° 12' 24.092" N
245			Cohal Chak Ramwapur				82° 38' 46.628" E	27° 12' 14.450" N
246			Machiya Mustacum				82° 36' 48.921" E	27° 12' 17.301" N
247			Padari Mustacum				82° 37' 39.561" E	27° 12' 17.982" N
248			Bharwniya Mustacum				82° 34' 23.609" E	27° 12' 2.385" N
249			Bharawaniya Ahatmli				82° 35' 4.161" E	27° 11' 53.784" N
250			Dumariya				82° 35' 50.774" E	27° 11' 46.806" N
251			Pikora				82° 34' 22.083" E	27° 10' 59.646" N
252			Nahtuya				82° 33' 0.396" E	27° 13' 14.904" N
253			Asanhara Mafi				82° 31' 11.407" E	27° 12' 59.807" N
254			Kohal Goan Coat				82° 32' 16.691" E	27° 13' 5.372" N
255			Sultanpur/Chandan Joot				82° 32' 38.228" E	27° 13' 0.753" N
256		<b>BIRDPUR</b>	Birdpur No.9				83° 7' 18.022" E	27° 22' 22.641" N



257		Dulha Daramyani				83° 11' 28.067" E	27° 23' 28.453" N
258		Bhagawanpur				83° 10' 10.269" E	27° 23' 13.778" N
259		Birdpur No.10				83° 6' 29.299" E	27° 21' 3.440" N
260		Gaya Ghat				83° 3' 47.558" E	27° 20' 53.081" N
261		Birdpur No.13				83° 5' 5.868" E	27° 19' 51.595" N
262		Baragadahi				83° 11' 35.601" E	27° 22' 35.466" N
263		Dulha Janubi				83° 11' 10.843" E	27° 22' 7.640" N
264		Birdpur NO.11				83° 6' 56.201" E	27° 19' 27.396" N
265	<b>DOMARIYAGANJ</b>	Dumeria Gang				82° 39' 17.162" E	27° 12' 12.254" N
266		Malimanha Ahatmli				82° 37' 38.000" E	27° 11' 55.869" N
267		Badhara Gagwar				82° 38' 18.269" E	27° 12' 2.384" N
268		Tanuhar				82° 37' 12.540" E	27° 11' 58.040" N
269		Sonkhar				82° 36' 28.335" E	27° 11' 31.441" N
270		Maadrha				82° 37' 12.103" E	27° 11' 25.418" N
271		Cosi Khurd Bujurg				82° 38' 59.303" E	27° 11' 31.450" N
272		Bithriya				82° 34' 48.429" E	27° 10' 30.156" N
273		Gajni Jot Urph Rasulabad				82° 33' 53.633" E	27° 10' 35.390" N
274		Bhalvihi				82° 35' 38.572" E	27° 10' 37.129" N
275		Paraspur				82° 35' 58.909" E	27° 10' 11.088" N
276		Chaura				82° 35' 51.148" E	27° 9' 45.858" N
277		Bhararia				82° 33' 1.990" E	27° 10' 21.865" N
278		Rudrooliya				82° 39' 39.517" E	27° 11' 45.804" N
279		Bangwa				82° 39' 4.793" E	27° 10' 49.218" N
280		Jagdeeshpur				82° 41' 23.530" E	27° 10' 28.991" N
281		Seer Majhari				82° 43' 6.937" E	27° 12' 1.346" N
282		Kudi				82° 42' 33.996" E	27° 10' 43.723" N
283		Bangaya Nankar				82° 43' 50.358" E	27° 12' 6.080" N
284		Baghadi				82° 46' 6.611" E	27° 11' 45.941" N
285		Penda				82° 47' 1.028" E	27° 11' 28.085" N
286		Mahokhawa				82° 43' 50.885" E	27° 11' 41.848" N
287		Paranpur				82° 44' 45.752" E	27° 11' 26.933" N
288		Ramwapur				82° 47' 50.343" E	27° 10' 59.611" N
289		Amonatiwri				82° 46' 23.671" E	27° 10' 54.970" N

290			Bhalokoni Japti			82° 47' 20.502" E	27° 10' 36.458" N
291			Gauri			82° 47' 46.941" E	27° 9' 51.520" N
292			Rasulpur			82° 42' 27.530" E	27° 11' 8.859" N
293			Pipra			82° 43' 10.482" E	27° 11' 17.913" N
294		<b>ITWA</b>	Son Nagar			82° 42' 49.061" E	27° 24' 16.088" N
295			Pali			82° 40' 42.602" E	27° 24' 21.359" N
296			Semri Nankar			82° 44' 49.975" E	27° 24' 16.341" N
297			Mudliya			82° 38' 20.092" E	27° 24' 2.278" N
298			Vairiya Grant			82° 48' 35.822" E	27° 24' 1.594" N
299			Vairiya Khalsa			82° 47' 51.073" E	27° 23' 55.643" N
300			Nakchedwa Tal			82° 47' 17.817" E	27° 24' 4.544" N
301			Bhaisahi Jungal			82° 50' 12.539" E	27° 23' 54.330" N
302			Khakhra			82° 49' 24.979" E	27° 23' 59.440" N
303			Narayanpur			82° 43' 57.483" E	27° 24' 23.302" N
304			Chagrihwa			82° 36' 40.305" E	27° 24' 12.810" N
305			Musa			82° 40' 0.888" E	27° 23' 44.287" N
306			Imiliya			82° 34' 27.786" E	27° 24' 17.641" N
307			Pach Mohni			82° 46' 9.949" E	27° 24' 18.672" N
308			Jigina Maphi			82° 41' 33.018" E	27° 24' 27.974" N
309			Jhakahi			82° 45' 30.303" E	27° 23' 57.039" N
310			Chirhakna			82° 39' 10.498" E	27° 24' 1.503" N
311			Persohan			82° 34' 26.827" E	27° 23' 34.955" N
312			Chechraf Khurd			82° 49' 25.646" E	27° 23' 36.731" N
313			Rehra Khurd			82° 46' 51.982" E	27° 23' 32.478" N
314			Chechraf(Bujurg)			82° 49' 43.776" E	27° 23' 13.550" N
315			Siswa			82° 47' 43.410" E	27° 23' 15.105" N
316			Kamsai			82° 48' 45.137" E	27° 23' 15.001" N
317			Kathela Garvi			82° 49' 0.204" E	27° 22' 31.936" N
318			Katela Sharki			82° 50' 17.468" E	27° 22' 26.589" N
319			Madrahna			82° 51' 6.403" E	27° 21' 54.110" N
320			Bhojwar			82° 49' 28.999" E	27° 21' 35.062" N
321			Tenua			82° 50' 22.022" E	27° 21' 27.784" N
322			Aurahwa			82° 52' 9.973" E	27° 21' 7.027" N
323			Bajra Bhari			82° 50' 53.626" E	27° 20' 58.432" N

324			Kathela Janubi				82° 49' 25.559" E	27° 20' 5.641" N
325			Bhelauha				82° 44' 35.138" E	27° 23' 51.888" N
326			Pachperwa				82° 46' 13.972" E	27° 23' 38.812" N
327		<b>JOGIAKHAS</b>	Nadawaliya				82° 53' 21.052" E	27° 22' 30.856" N
328			Amahawa				82° 53' 5.036" E	27° 21' 53.599" N
329			Nakahi				82° 53' 0.994" E	27° 20' 33.339" N
330			Bhapasi				82° 53' 47.606" E	27° 19' 24.755" N
331			Bairihawa				82° 53' 9.347" E	27° 19' 9.318" N
332			Dabara				82° 55' 13.882" E	27° 18' 50.974" N
333			Parasohiya				82° 53' 52.257" E	27° 18' 58.385" N
334			Bhaisahawa				82° 53' 52.325" E	27° 18' 32.010" N
335			Gaya Ghat				82° 54' 46.623" E	27° 17' 44.371" N
336			Nagapari				82° 55' 24.522" E	27° 17' 35.298" N
337			Maharatha				82° 54' 13.076" E	27° 17' 12.356" N
338			Kulghwanpur				82° 54' 39.485" E	27° 17' 5.805" N
339			Lamati				82° 55' 7.432" E	27° 16' 58.437" N
340			Khetawal Misra				82° 56' 11.345" E	27° 18' 53.171" N
341			Kusumhar				82° 55' 25.609" E	27° 18' 21.417" N
342			Deorihawa				82° 55' 53.890" E	27° 18' 6.163" N
343			Piparahwa				82° 56' 27.560" E	27° 17' 54.760" N
344			Majhawan				82° 56' 18.685" E	27° 17' 15.923" N
345			Nagpara				82° 55' 43.200" E	27° 17' 20.883" N
346			Deorawa				82° 57' 13.413" E	27° 17' 39.976" N
347			Gengati				82° 57' 8.877" E	27° 17' 11.890" N
348			Karajahwa				82° 58' 4.772" E	27° 17' 3.388" N
349			Ahar				82° 56' 47.510" E	27° 16' 55.497" N
350			Ahari				82° 56' 59.547" E	27° 16' 29.465" N
351			Dumariya				82° 57' 41.576" E	27° 16' 43.400" N
352			Karanda Masina				83° 1' 35.086" E	27° 15' 45.587" N
353			Nadepar				82° 59' 31.866" E	27° 16' 4.253" N
354			Sirasiya				83° 1' 40.802" E	27° 15' 6.483" N
355			Kodartal				82° 58' 52.541" E	27° 16' 29.903" N
356			Mechuka				82° 58' 19.318" E	27° 16' 27.190" N
357			Semara				82° 57' 22.142" E	27° 16' 8.693" N

358			Harakauli				82° 58' 7.111" E	27° 15' 52.394" N
359			Dohani				82° 58' 49.835" E	27° 15' 44.876" N
360			Majigawa				82° 59' 43.941" E	27° 15' 37.728" N
361			Khetawal Tiwari				82° 57' 24.925" E	27° 15' 31.508" N
362			Srinagar				82° 56' 45.732" E	27° 15' 31.776" N
363			Bhitiya Raja				83° 0' 6.941" E	27° 15' 18.687" N
364			Koyara				82° 59' 27.070" E	27° 15' 2.090" N
365			Kunwarapar				83° 0' 30.835" E	27° 15' 14.128" N
366			Udai Pur				83° 0' 35.051" E	27° 14' 47.780" N
367			Kanhekusum				82° 57' 51.297" E	27° 15' 8.077" N
368			Bhutahiya				82° 58' 33.333" E	27° 15' 5.736" N
369			Gangawal				82° 59' 8.802" E	27° 14' 35.982" N
370			Jogiya				83° 1' 0.447" E	27° 14' 36.885" N
371			Tikari				83° 0' 6.144" E	27° 14' 37.076" N
372			Barahara				83° 1' 48.334" E	27° 14' 17.163" N
373			Lakhanapar				83° 1' 27.496" E	27° 14' 25.779" N
374			Haraiya				83° 2' 44.119" E	27° 14' 8.075" N
375			Kakarahi				82° 59' 35.737" E	27° 14' 10.287" N
376			Gonaha				83° 1' 9.050" E	27° 13' 56.362" N
377			Mahua				83° 0' 27.571" E	27° 13' 57.881" N
378			Banjaraha Khurd				83° 0' 38.224" E	27° 13' 31.074" N
379			Sikahula				83° 2' 34.529" E	27° 13' 36.192" N
380			Kapiya				83° 1' 54.265" E	27° 13' 38.985" N
381			Bangara				83° 1' 15.929" E	27° 13' 8.837" N
382			Marukharg Kala				83° 3' 12.142" E	27° 12' 52.790" N
383			Rampurawa				83° 2' 35.443" E	27° 13' 17.364" N
384			Keotaliya				83° 0' 24.786" E	27° 12' 56.364" N
385			Kusumhi				83° 1' 45.104" E	27° 12' 41.684" N
386			Semara Kala				83° 2' 27.972" E	27° 12' 54.255" N
387			Sonabarasa				83° 2' 58.750" E	27° 12' 49.574" N
388			Barago				83° 0' 44.084" E	27° 12' 29.195" N
389			Banki				83° 2' 34.804" E	27° 12' 17.365" N
390			Puraina				83° 3' 22.541" E	27° 11' 50.789" N
391			Dhobaha				83° 1' 59.984" E	27° 12' 3.544" N

392			Tandiya Bazar				83° 2' 27.946" E	27° 11' 37.277" N
393			Marawatiya				83° 1' 42.407" E	27° 11' 48.624" N
394			Semara Khurd				83° 2' 3.786" E	27° 11' 41.699" N
395			Fattepur				83° 3' 47.453" E	27° 11' 27.424" N
396			Marukharg Khurd				83° 1' 52.623" E	27° 11' 11.346" N
397			Khajur Dar				83° 4' 40.584" E	27° 11' 18.230" N
398			Dumariya Khurd				83° 2' 56.524" E	27° 11' 14.077" N
399			Tandiya Buzurg				83° 3' 32.175" E	27° 11' 6.880" N
400			Gayaghat				83° 5' 12.182" E	27° 10' 36.934" N
401			Pedari Khurd				83° 2' 25.304" E	27° 11' 2.867" N
402			Bhirauna Tal				83° 4' 41.895" E	27° 10' 53.390" N
403			Dhusawa				83° 4' 6.866" E	27° 10' 58.044" N
404			Harani Buzurg				83° 3' 7.011" E	27° 10' 44.608" N
405			Nathuapur				83° 2' 37.975" E	27° 10' 44.281" N
406			Itauwa				83° 3' 37.537" E	27° 10' 33.066" N
407			Riwa Nankar				83° 3' 49.835" E	27° 10' 13.452" N
408			Majhagawa				83° 2' 47.947" E	27° 10' 26.977" N
409			Bairawa Nankar				83° 4' 15.504" E	27° 10' 0.993" N
410			Patakhauri				83° 2' 37.189" E	27° 9' 38.858" N
411			Jogiya				83° 2' 35.380" E	27° 10' 5.875" N
412			Harani Khurd				83° 2' 52.029" E	27° 10' 13.207" N
413			Amariya				83° 3' 14.546" E	27° 9' 35.787" N
414			Gothawa				83° 3' 38.798" E	27° 9' 37.052" N
415			Sangal Dip				83° 2' 51.127" E	27° 9' 5.234" N
416		<b>KHESRAHA</b>	Talcorai				83° 5' 24.545" E	27° 9' 50.861" N
417			Dulahi				83° 4' 12.630" E	27° 9' 17.950" N
418			Dadia Khurd				83° 3' 43.178" E	27° 9' 8.685" N
419			Panghatia				83° 8' 17.197" E	27° 6' 56.978" N
420			Matiyaria				83° 0' 36.934" E	27° 9' 42.603" N
421			Bisunpura Ahatmali				83° 1' 2.062" E	27° 8' 56.916" N
422			Sisahania				83° 0' 25.141" E	27° 9' 3.023" N
423			Banjarah Buzurg				83° 3' 0.483" E	27° 8' 41.156" N
424			Semrahtamali				83° 2' 11.726" E	27° 8' 31.756" N
425			Bisunpur Mustahkam				83° 0' 42.407" E	27° 8' 25.797" N

426			Dadia			83° 0' 20.858" E	27° 8' 39.477" N
427			Kapia			82° 54' 26.682" E	27° 0' 1.139" N
428			Dauvrihar			82° 58' 24.586" E	27° 2' 41.829" N
429			Shahpur			82° 57' 45.619" E	27° 2' 23.601" N
430		<b>KHUNIYAON</b>	Mainihwa			82° 50' 3.655" E	27° 20' 5.453" N
431			Navel			82° 52' 14.905" E	27° 20' 29.574" N
432			Dhowha			82° 50' 45.336" E	27° 19' 37.003" N
433			Khaudi			82° 52' 4.675" E	27° 20' 4.399" N
434			Gaurdih			82° 51' 41.895" E	27° 19' 15.137" N
435			Misrauliya			82° 52' 46.632" E	27° 19' 0.193" N
436			Gondara			82° 52' 5.625" E	27° 18' 16.988" N
437			Urwaliya			82° 51' 25.074" E	27° 18' 11.488" N
438			Horilapur			82° 53' 3.039" E	27° 18' 3.343" N
439			Madhawpur Khurd			82° 53' 42.665" E	27° 17' 56.243" N
440			Madhwapur Kalan			82° 53' 55.618" E	27° 17' 34.565" N
441			Velwa			82° 49' 40.589" E	27° 17' 17.634" N
442			Kurthi Diha			82° 53' 27.449" E	27° 16' 59.448" N
443			Khaira Khas			82° 50' 5.923" E	27° 16' 34.563" N
444			Nagchauri			82° 50' 59.237" E	27° 16' 3.117" N
445			Bankata			82° 49' 59.309" E	27° 15' 42.302" N
446			Harrya			82° 51' 33.326" E	27° 15' 26.020" N
447			Manker			82° 51' 59.268" E	27° 15' 14.423" N
448			Mankari			82° 52' 23.666" E	27° 15' 9.705" N
449			Semra			82° 49' 5.456" E	27° 16' 55.725" N
450			Bharbhar Satha			82° 48' 20.134" E	27° 17' 2.046" N
451			Pajauta			82° 48' 32.176" E	27° 16' 24.431" N
452			Aojhajot			82° 49' 31.688" E	27° 16' 20.786" N
453			Khakhra Khakhari			82° 47' 25.186" E	27° 16' 0.441" N
454			Teliya Diha			82° 48' 25.459" E	27° 15' 44.243" N
455			Dhobha Mustahkam			82° 42' 15.964" E	27° 13' 15.697" N
456			Dhoorhra May Parsadi Khas			82° 41' 36.131" E	27° 13' 4.903" N
457			Rudrooliya Bujurg			82° 41' 0.191" E	27° 13' 3.631" N
458			Dhourhara Ahtmali			82° 42' 31.383" E	27° 12' 43.301" N

459		Gosyamay Sirya Baghal				82° 41' 23.691" E	27° 12' 18.142" N
460		Katya Mustahcum				82° 40' 28.676" E	27° 12' 18.324" N
461		Rajpur				82° 42' 16.978" E	27° 12' 7.015" N
462		Katya Ahtkali				82° 40' 3.568" E	27° 12' 12.091" N
463		Jankata Urph Khajuraha				82° 40' 47.779" E	27° 11' 54.181" N
464		Balbanva				82° 40' 8.771" E	27° 11' 53.431" N
465		Moakkilpur Urf Gulhariya				82° 41' 26.896" E	27° 11' 38.805" N
466		Kaghw				82° 40' 15.309" E	27° 11' 26.345" N
467		Badhara Khas				82° 43' 9.896" E	27° 13' 1.456" N
468		Vergadwa				82° 47' 16.917" E	27° 15' 17.645" N
469		Karhi Khas				82° 46' 55.718" E	27° 14' 10.678" N
470		Valibhadarpur Govaraha				82° 47' 46.554" E	27° 13' 29.268" N
471		Rajwapur Urf Belwa				82° 48' 16.095" E	27° 13' 26.308" N
472		Panchmohani				82° 47' 3.910" E	27° 13' 15.267" N
473		Khurhur Bandi				82° 45' 54.986" E	27° 13' 14.151" N
474		Penda Nankar				82° 46' 26.227" E	27° 13' 6.107" N
475		Dev Bhariya				82° 45' 11.510" E	27° 13' 13.511" N
476		Rajwapur Misra				82° 43' 50.336" E	27° 13' 10.485" N
477		Mateser Nankar				82° 47' 21.848" E	27° 12' 52.640" N
478		Dadwa				82° 48' 17.623" E	27° 12' 45.956" N
479		Narayanpur				82° 47' 43.600" E	27° 12' 49.410" N
480		Dupheriya Misra				82° 45' 40.558" E	27° 12' 47.180" N
481		Shankerpur Shankerjot				82° 43' 37.052" E	27° 12' 53.121" N
482		Cherajot				82° 44' 52.131" E	27° 12' 41.630" N
483		Mahua Pathak Nankar				82° 46' 53.269" E	27° 12' 19.256" N
484		Duvaayal Panday				82° 48' 45.886" E	27° 12' 36.087" N
485		Mirzapur/Gaura Narottam				82° 44' 2.557" E	27° 12' 38.875" N
486		Ekdegwa Musthakham				82° 46' 12.034" E	27° 12' 37.182" N
487		Akbarpur				82° 43' 33.014" E	27° 12' 39.998" N
488		Mankhoriya Jeet				82° 47' 57.838" E	27° 12' 17.385" N

489			Palta				82° 45' 29.314" E	27° 12' 7.357" N
490			Palti				82° 45' 47.739" E	27° 12' 20.629" N
491			Gaura Panchgauti				82° 44' 39.732" E	27° 12' 20.287" N
492			Ekdegwa Ahhatmali				82° 46' 10.382" E	27° 12' 19.372" N
493			Bangawa				82° 48' 24.368" E	27° 12' 15.093" N
494			Gaura Bazar				82° 44' 54.276" E	27° 12' 4.241" N
495			Mankhoriya Kot				82° 47' 39.759" E	27° 11' 56.896" N
496			Tighari Rai				82° 48' 28.040" E	27° 11' 51.931" N
497			Tighra				82° 48' 11.976" E	27° 11' 29.385" N
498		<b>MITHWAL</b>	Bankata				82° 48' 32.539" E	27° 10' 44.257" N
499			Sehrighat				82° 49' 25.722" E	27° 10' 7.507" N
500			Kishunpurwa				82° 48' 44.859" E	27° 10' 13.086" N
501			Pathratal				82° 49' 4.615" E	27° 9' 34.454" N
502			Babhni Nankar				82° 49' 54.968" E	27° 9' 47.210" N
503			Pathra Bazar				82° 48' 26.584" E	27° 9' 14.978" N
504			Kamharia Buzurg				82° 48' 49.982" E	27° 8' 46.783" N
505			Kamharia Khurd				82° 49' 27.599" E	27° 8' 42.753" N
506			Rudlapur				82° 53' 41.766" E	27° 11' 51.297" N
507			Harria				82° 53' 59.916" E	27° 11' 28.470" N
508			Kharika Khas				82° 53' 42.586" E	27° 11' 36.251" N
509			Kharka Tadhwar				82° 53' 28.765" E	27° 11' 36.373" N
510			Kharika Panday				82° 52' 53.646" E	27° 11' 13.889" N
511			Mithwal Ahtmali				82° 51' 39.836" E	27° 10' 11.215" N
512			Kakuwa Urf Bhatijwapur				82° 52' 18.330" E	27° 9' 54.741" N
513			Bankatia				82° 54' 29.189" E	27° 10' 55.970" N
514		<b>NAUGARH</b>	Kodara Grant				83° 3' 17.114" E	27° 19' 35.573" N
515			Bachara Bachari				83° 2' 45.935" E	27° 18' 39.383" N
516			Bhadehar Grant				83° 2' 56.178" E	27° 21' 9.988" N
517			Mahadeya				83° 3' 0.500" E	27° 19' 1.096" N
518			Raje Dera				83° 3' 38.866" E	27° 18' 48.639" N
519			Madhubani				83° 9' 59.074" E	27° 22' 17.220" N
520			Rampur				83° 8' 21.697" E	27° 21' 2.708" N
521			Ram Garh				83° 9' 25.944" E	27° 19' 46.821" N



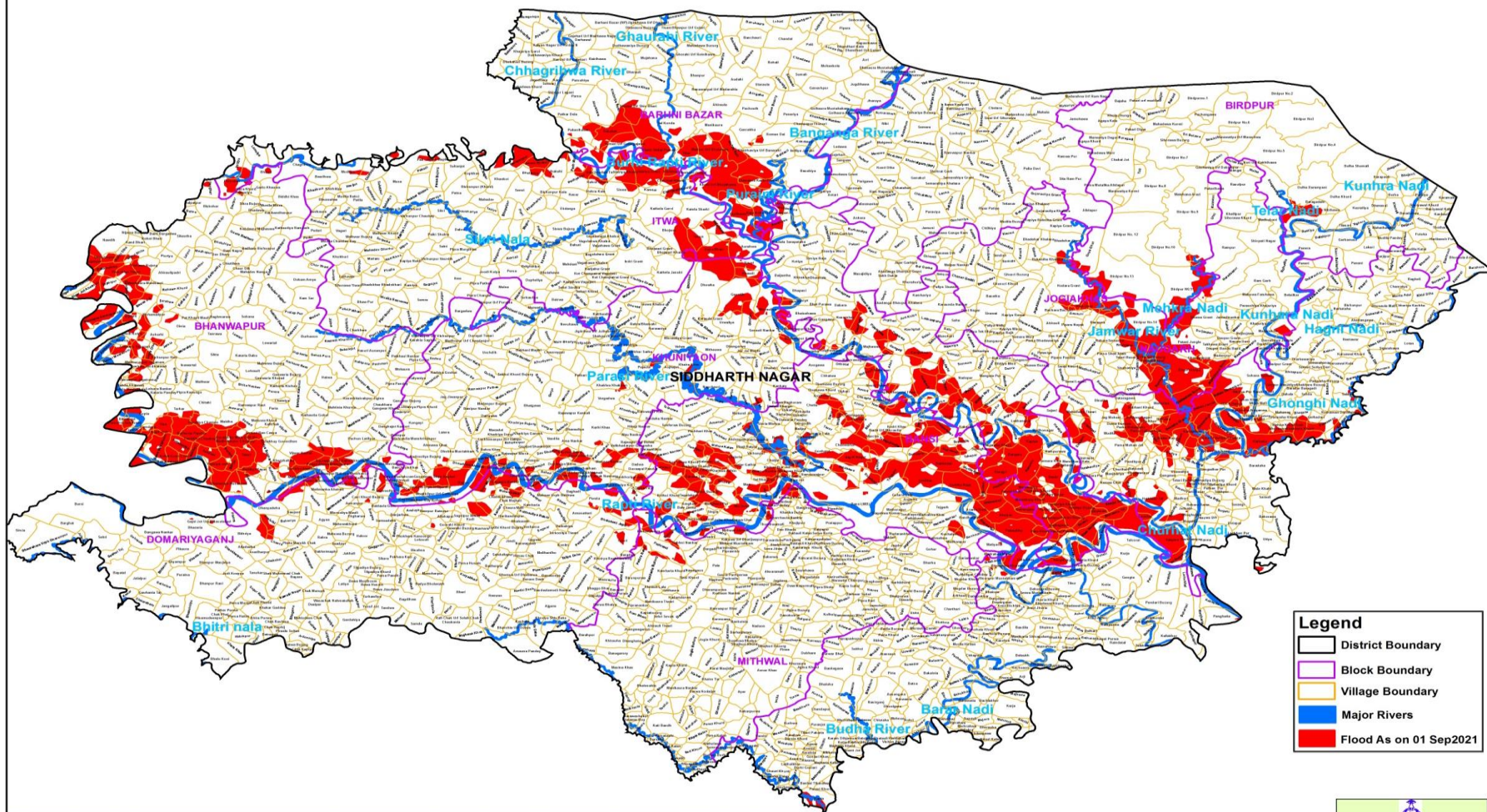
522			Haradaspur				83° 8' 39.385" E	27° 20' 1.849" N
523			Sisawa Grant				83° 7' 42.377" E	27° 18' 29.356" N
524			Semara				83° 10' 26.847" E	27° 18' 4.273" N
525			Kush Bhawwana				83° 9' 10.802" E	27° 17' 9.224" N
526			Birdpur No.14				83° 5' 33.114" E	27° 18' 11.900" N
527			Basauni				83° 3' 25.024" E	27° 18' 32.986" N
528			Barago				83° 4' 37.023" E	27° 18' 16.271" N
529			Mahanag				83° 4' 4.055" E	27° 18' 16.577" N
530			Kesari				83° 3' 48.914" E	27° 18' 18.212" N
531			Semarnar				83° 4' 38.652" E	27° 17' 44.990" N
532			Patani Jungle				83° 7' 15.671" E	27° 17' 22.895" N
533			Bhimapar				83° 5' 0.438" E	27° 17' 17.859" N
534			Tetri Bazar (MB)				83° 5' 33.461" E	27° 16' 32.498" N
535			Dhuri Kuya				83° 6' 57.373" E	27° 16' 22.359" N
536			Tetari Bazar				83° 5' 8.119" E	27° 16' 51.494" N
537			Gharawaspar				83° 7' 35.551" E	27° 16' 50.044" N
538			Pithani Buzurg				83° 5' 44.240" E	27° 16' 43.746" N
539			Jagadishpur Grant				83° 8' 5.822" E	27° 16' 17.958" N
540			Pithani Khurd				83° 5' 55.623" E	27° 16' 33.998" N
541			Romapar				83° 6' 8.762" E	27° 15' 54.518" N
542			Chilhedara Grant				83° 7' 12.367" E	27° 15' 19.234" N
543		<b>USKA BAZAR</b>	Padaraha Buzurg				83° 12' 35.851" E	27° 15' 37.494" N
544			Gadah Marawa				83° 11' 1.694" E	27° 17' 29.041" N
545			Sainua				83° 12' 42.682" E	27° 15' 10.693" N
546			Sohasa Sumali				83° 9' 33.156" E	27° 16' 9.502" N
547			Mainua				83° 12' 57.796" E	27° 14' 49.959" N
548			Gulariha				83° 11' 31.882" E	27° 13' 48.376" N
549			Bhagata				83° 11' 6.989" E	27° 14' 44.177" N
550			Parasauna				83° 11' 56.904" E	27° 14' 23.773" N
551			Gelhadari				83° 11' 34.168" E	27° 14' 34.045" N
552			Badahara				83° 12' 22.466" E	27° 14' 9.818" N
553			Bhelauji Buzurg				83° 9' 52.022" E	27° 14' 36.580" N
554			Khajuriya				83° 10' 5.658" E	27° 14' 28.695" N
555			Khakhara Khurd				83° 11' 1.089" E	27° 14' 8.311" N

556			Mahua Kashi Ram				83° 10' 37.002" E	27° 14' 14.091" N
557			Baradaha				83° 9' 32.839" E	27° 12' 43.707" N
558			Sohas Daramiyani				83° 8' 35.557" E	27° 15' 39.962" N
559			Mahariya				83° 6' 18.697" E	27° 15' 9.173" N
560			Binaika				83° 4' 7.514" E	27° 15' 12.821" N
561			Sohas Khas				83° 9' 13.403" E	27° 15' 14.347" N
562			Sohas Janubi				83° 7' 46.687" E	27° 15' 1.328" N
563			Dataragawa				83° 5' 2.270" E	27° 15' 17.763" N
564			Unch Hariya				83° 8' 43.995" E	27° 15' 5.325" N
565			Sajani				83° 2' 36.187" E	27° 14' 50.028" N
566			Pakari				83° 4' 58.734" E	27° 14' 51.873" N
567			Babhani Khurd				83° 5' 33.199" E	27° 14' 56.690" N
568			Jhuganwa				83° 9' 40.498" E	27° 14' 49.453" N
569			Banjaraha				83° 9' 17.070" E	27° 14' 50.396" N
570			Paraspur				83° 8' 43.741" E	27° 14' 34.718" N
571			Mahadewa Tiwari				83° 3' 36.264" E	27° 14' 46.447" N
572			Bishunpur				83° 4' 3.079" E	27° 14' 38.700" N
573			Kolhua				83° 6' 16.210" E	27° 14' 45.525" N
574			Chanaraiya				83° 7' 46.556" E	27° 14' 24.510" N
575			Babhani Lagari				83° 5' 32.739" E	27° 14' 33.566" N
576			Deolaha Grant				83° 6' 45.199" E	27° 14' 21.175" N
577			Jag Mohani				83° 4' 33.748" E	27° 14' 33.959" N
578			Bhelauji Khurd				83° 9' 16.932" E	27° 14' 28.809" N
579			Nebuiya				83° 6' 24.044" E	27° 14' 30.170" N
580			Mahua				83° 3' 22.629" E	27° 14' 29.285" N
581			Basawanpur				83° 8' 22.564" E	27° 14' 8.637" N
582			Parsa Mahapatra				83° 5' 12.912" E	27° 14' 11.168" N
583			Sihorawa				83° 3' 11.603" E	27° 14' 9.121" N
584			Chaurasi				83° 3' 48.206" E	27° 14' 10.337" N
585			Semara Husain Baksa				83° 6' 8.182" E	27° 14' 19.176" N
586			Mudila				83° 9' 38.640" E	27° 14' 9.979" N
587			Parsa Sukaru Llah				83° 5' 44.391" E	27° 14' 9.101" N
588			Kanajahwa				83° 7' 22.813" E	27° 14' 3.971" N
589			Mudila				83° 4' 32.414" E	27° 14' 0.347" N

590		Duma Dumwa				83° 4' 49.402" E	27° 14' 11.755" N
591		Kathaha				83° 9' 41.816" E	27° 13' 42.567" N
592		Khutawa				83° 6' 54.419" E	27° 13' 44.140" N
593		Bhaluha				83° 7' 50.151" E	27° 13' 43.473" N
594		Kataki				83° 6' 2.682" E	27° 13' 47.681" N
595		Kara Chhuliya Khalasa				83° 8' 15.132" E	27° 13' 46.607" N
596		Madar Hana				83° 6' 26.650" E	27° 13' 43.582" N
597		Bangawa				83° 7' 19.077" E	27° 13' 36.284" N
598		Pipara				83° 5' 32.472" E	27° 13' 39.226" N
599		Nagawa				83° 8' 45.342" E	27° 13' 26.312" N
600		Parsa Mohan Jot				83° 5' 11.611" E	27° 13' 30.248" N
601		Chorai				83° 5' 52.604" E	27° 13' 30.638" N
602		Fulawariya				83° 7' 37.169" E	27° 13' 12.452" N
603		Karachhuliya Grant				83° 8' 3.002" E	27° 13' 16.797" N
604		Katka				83° 6' 12.378" E	27° 13' 20.391" N
605		Gaura				83° 7' 11.500" E	27° 13' 12.918" N
606		Kuriya				83° 6' 35.738" E	27° 13' 10.875" N
607		Dumariya				83° 8' 12.736" E	27° 13' 0.063" N
608		Parsa Buzurg				83° 7' 20.474" E	27° 12' 49.373" N
609		Bihatha				83° 6' 32.746" E	27° 12' 46.364" N
610		Rehara				83° 8' 26.758" E	27° 12' 52.245" N
611		Parsa Khurd				83° 7' 25.421" E	27° 12' 27.937" N
612		Mahua				83° 6' 51.939" E	27° 12' 10.188" N
613		Tetari Buzurg				83° 7' 14.414" E	27° 12' 3.843" N
614		Utiya				83° 9' 42.721" E	27° 9' 54.771" N
615		Chokhar				83° 3' 31.503" E	27° 13' 34.912" N
616		Chorai				83° 3' 57.981" E	27° 13' 23.550" N
617		Bhagwanpur				83° 5' 31.066" E	27° 12' 26.902" N
618		Tighara				83° 4' 54.412" E	27° 12' 17.773" N
619		Chitara Par				83° 3' 50.531" E	27° 12' 7.704" N
620		Muharaiya				83° 5' 11.211" E	27° 11' 51.963" N
621		Hathiwari Tal				83° 5' 59.664" E	27° 11' 22.410" N
622		Mahadewa Buzurg				83° 4' 21.251" E	27° 11' 42.957" N
623		Laukhai				83° 5' 42.218" E	27° 10' 47.205" N

624			Ajagara				83° 6' 29.176" E	27° 10' 4.746" N
625			Deurawa				83° 13' 54.081" E	27° 16' 25.001" N
626			Sihoranwa				83° 10' 14.168" E	27° 14' 8.353" N
627			Sekhuiya				83° 6' 48.597" E	27° 10' 49.190" N
628			Tal Bagahiya				83° 6' 52.925" E	27° 9' 18.857" N

**MAP FOR FLOOD AFFECTED AND WATERLOGGED AREAS ALONG RPTI, OLD RPTI, AND JAMWAR RIVERS IN PARTS OF SIDDHARTH NAGAR DISTRICT, U.P.  
( FLOOD AFFECTED AREA 28077 ha. AS ON 01 SEPTEMBER 2021 )**



**Legend**

- District Boundary
- Block Boundary
- Village Boundary
- Major Rivers
- Flood As on 01 Sep2021

**Note :- Heavy Rain Inundated areas in parts of U.P (as on 01 September 2021) received from NRSC/ISRO, Hyderabad.**

