

List of flood affected near by villages in Maharajganj District (U.P.) as on 1st Sept. 2021

Flood affected blocks=9

Flood affected villages=136

Flood affected area= 6588 ha.

S.N.	DISTRICT	BLOCK	VILLAGE	BLOCK	VILLAGE	AFFECTED AREA (in Ha.)	LONGITUDE	LATITUDE
1	MAHRAJGANJ	Brijmanganj	Jiginiha	9	136	6588	83° 15' 24.167" E	27° 17' 50.101" N
2			Keshauli				83° 16' 13.085" E	27° 17' 57.811" N
3			Dharaichi				83° 15' 53.972" E	27° 16' 53.847" N
4			Kharkhori				83° 15' 37.704" E	27° 16' 30.668" N
5			Gujraulia				83° 14' 1.953" E	27° 14' 28.709" N
6			Rasoiya				83° 13' 2.296" E	27° 14' 13.330" N
7			Son Bandi				83° 14' 55.099" E	27° 14' 10.563" N
8			Achal Garh				83° 14' 41.785" E	27° 13' 50.894" N
9			Basdila				83° 14' 23.237" E	27° 13' 40.954" N
10			Madrahna				83° 13' 56.352" E	27° 13' 40.937" N
11			Rajpur Buzurg				83° 15' 12.068" E	27° 17' 6.262" N
12			Semrahna				83° 16' 7.175" E	27° 17' 10.377" N
13			Laukaha				83° 14' 26.358" E	27° 16' 10.468" N
14			Khar Khora				83° 15' 9.066" E	27° 16' 15.623" N
15			Navadih Khurd				83° 15' 27.976" E	27° 15' 35.307" N
16			Laukahi				83° 14' 51.335" E	27° 15' 30.459" N
17			Vishrampur				83° 15' 56.734" E	27° 15' 14.818" N
18			Bahduri				83° 16' 30.543" E	27° 15' 3.333" N
19			Mahav				83° 15' 16.744" E	27° 14' 57.326" N
20			Gopalpur				83° 15' 49.894" E	27° 14' 23.268" N
21			Sarvadavan Garh				83° 13' 23.747" E	27° 15' 38.899" N
22			Sahjanwa				83° 14' 5.371" E	27° 15' 23.753" N
23			Prithvipal Garh				83° 12' 21.506" E	27° 13' 20.634" N
24			Mishrauliya				83° 13' 40.540" E	27° 13' 18.332" N
25			Shahabad				83° 12' 27.994" E	27° 12' 19.940" N
26			Bela				83° 10' 47.283" E	27° 12' 53.546" N
27			Harraiya Maulahi				83° 11' 28.077" E	27° 12' 49.614" N
28		Dhani	Nirnam Paschami				83° 14' 18.074" E	27° 6' 7.131" N

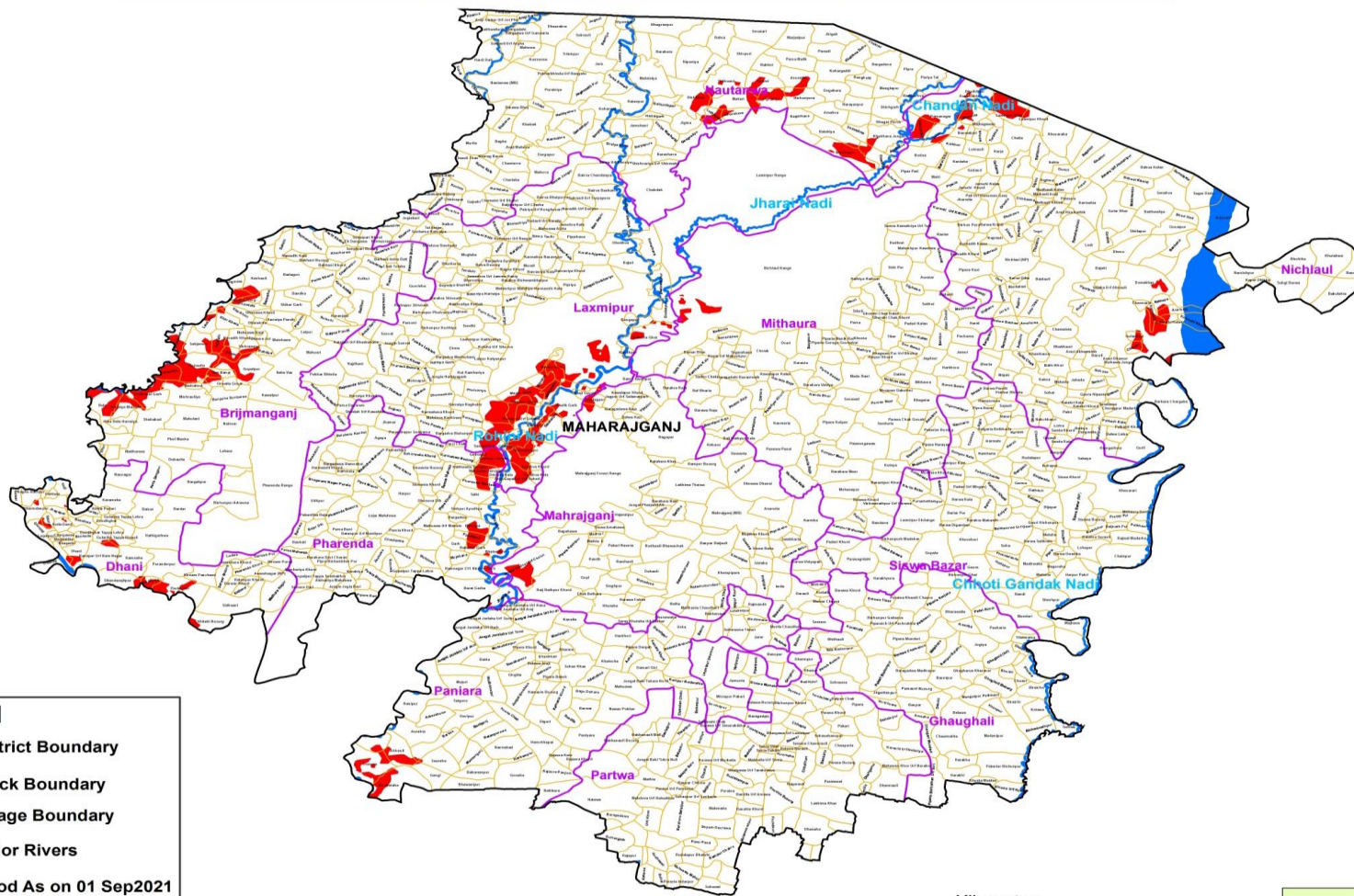
29			Chhitahi Buzurg			83° 14' 29.849" E	27° 4' 15.376" N
30			Karkhi			83° 9' 58.612" E	27° 8' 46.450" N
31			Mahdewa			83° 9' 0.748" E	27° 9' 2.267" N
32			Raghu Nathpur			83° 8' 17.438" E	27° 9' 26.591" N
33			Dondhghat Tappa Lehra			83° 10' 39.234" E	27° 7' 44.802" N
34			Gulariha Tappa Rinauli			83° 11' 16.941" E	27° 7' 37.074" N
35			Kanapar Urf Ram Nagar			83° 10' 36.171" E	27° 6' 52.872" N
36			Dhani			83° 9' 45.049" E	27° 6' 58.062" N
37			Kamnaha			83° 11' 46.311" E	27° 6' 49.685" N
38			Nagawa			83° 11' 39.587" E	27° 6' 16.476" N
39			Sikandarajitpur			83° 11' 12.168" E	27° 5' 55.556" N
40			Pachrukhi			83° 13' 29.914" E	27° 5' 34.689" N
41			Tal Berha			83° 12' 22.018" E	27° 5' 50.617" N
42			Chauka			83° 8' 57.845" E	27° 6' 37.074" N
43			Dharmdaspur			83° 8' 11.672" E	27° 8' 40.053" N
44			Sikara			83° 8' 42.095" E	27° 8' 17.355" N
45			Koila Dand			83° 9' 13.067" E	27° 8' 8.406" N
46			Ghivpid			83° 8' 25.385" E	27° 7' 51.898" N
47		Laxmipur	Laxmipur Range			83° 33' 52.028" E	27° 21' 46.785" N
48			Brahmpur			83° 30' 54.729" E	27° 16' 36.790" N
49			Terhi			83° 30' 8.817" E	27° 16' 14.692" N
50			Laxmipur Range			83° 27' 42.012" E	27° 15' 40.179" N
51			Belauha Ghat			83° 30' 17.573" E	27° 15' 42.674" N
52			Bhotaha			83° 26' 32.132" E	27° 14' 4.744" N
53			Navabi Ghat			83° 26' 59.723" E	27° 14' 25.538" N
54			Mathiyaidu			83° 26' 46.503" E	27° 13' 27.013" N
55			Khalik Garh			83° 27' 26.571" E	27° 12' 53.896" N
56			Manik Talab			83° 25' 45.147" E	27° 13' 22.849" N
57			Araji Suvain			83° 28' 3.105" E	27° 13' 23.135" N
58			Rampur Jhalua			83° 25' 39.659" E	27° 12' 48.722" N
59			Bhagvanpur			83° 24' 44.987" E	27° 12' 42.742" N
60			Rajapur			83° 26' 22.128" E	27° 12' 34.188" N
61			Kodaipur Urf Gidaha			83° 25' 45.846" E	27° 12' 21.506" N
62			Kashipur			83° 26' 16.445" E	27° 12' 5.289" N

63			Basantpur			83° 24' 51.958" E	27° 11' 58.489" N
64			Gauharpur			83° 26' 51.457" E	27° 11' 55.381" N
65			Samardhira			83° 24' 20.834" E	27° 11' 27.968" N
66			Raghunath Pur			83° 25' 27.670" E	27° 11' 41.447" N
67			Bhagvanpur			83° 25' 41.025" E	27° 11' 26.574" N
68			Karimdadpur			83° 25' 55.534" E	27° 11' 10.228" N
69			Ranipur			83° 26' 33.098" E	27° 11' 3.709" N
70			Chandpur			83° 25' 14.363" E	27° 11' 12.466" N
71			Devipur			83° 25' 35.792" E	27° 10' 44.800" N
72			Araji Gayadatt Urf Subed			83° 25' 34.089" E	27° 9' 57.555" N
73			Aurahva Khurd			83° 26' 14.398" E	27° 10' 26.388" N
74			Aurahva Kala			83° 26' 16.279" E	27° 10' 4.142" N
75		Mahrajganj	Jagpur Urf Salamatgarh			83° 28' 53.011" E	27° 13' 14.702" N
76			Arajijagpur			83° 28' 23.928" E	27° 13' 6.374" N
77			Mahrajganj Forest Range			83° 28' 14.742" E	27° 10' 10.445" N
78			Jungal Dudhai Urf Chehri			83° 25' 50.206" E	27° 6' 26.069" N
79			Baij Nathpur Khurd			83° 26' 53.012" E	27° 5' 40.238" N
80		Mithaura	Nichlaur Range			83° 35' 12.114" E	27° 18' 22.651" N
81		Nautanwa	Asuraina			83° 35' 41.243" E	27° 25' 58.614" N
82			Taraini			83° 34' 23.725" E	27° 25' 48.288" N
83			Bishunpura			83° 35' 51.371" E	27° 25' 11.234" N
84			Mahari			83° 33' 27.006" E	27° 25' 5.184" N
85			Piprahiya			83° 34' 48.276" E	27° 25' 7.046" N
86			Ghorahava			83° 33' 26.496" E	27° 24' 31.177" N
87			Belahiya			83° 36' 54.803" E	27° 23' 49.538" N
88			Khairhava Jungal			83° 38' 53.411" E	27° 23' 38.692" N
89			Semrahna			83° 37' 50.186" E	27° 23' 49.733" N
90			Manikapur			83° 37' 27.603" E	27° 22' 56.558" N
91			Sihabhar			83° 38' 30.643" E	27° 22' 35.388" N
92			Sekhuani			83° 33' 3.673" E	27° 25' 50.577" N
93			Bishkhop			83° 31' 50.345" E	27° 25' 14.376" N
94			Luthhahva			83° 32' 41.727" E	27° 24' 29.609" N
95			Jigina			83° 31' 37.841" E	27° 24' 10.658" N
96			Gangvaliya			83° 31' 54.476" E	27° 23' 33.767" N

97		Nichlaul	Dhuthibari			83° 41' 46.069" E	27° 25' 15.156" N
98			Laxmipur Kala			83° 43' 18.474" E	27° 24' 46.737" N
99			Araji Bairia			83° 41' 52.503" E	27° 25' 2.456" N
100			Ramanagar			83° 40' 43.004" E	27° 24' 35.347" N
101			Laxmipur Khurd			83° 44' 13.500" E	27° 24' 20.902" N
102			Bharwlia			83° 41' 59.507" E	27° 24' 28.404" N
103			Kishunpur			83° 39' 59.990" E	27° 23' 56.398" N
104			Basantpur			83° 41' 32.508" E	27° 23' 53.149" N
105			Sovar			83° 40' 43.902" E	27° 23' 43.532" N
106			Katkhor			83° 41' 18.266" E	27° 23' 17.872" N
107			Bodna			83° 40' 11.472" E	27° 22' 53.412" N
108			Nichlaul Range			83° 47' 6.617" E	27° 16' 23.162" N
109			Domakhas			83° 48' 4.768" E	27° 17' 47.983" N
110			Kathaya			83° 48' 46.967" E	27° 17' 2.242" N
111			Charmaria			83° 48' 3.715" E	27° 16' 55.281" N
112			Karvatahi			83° 48' 30.618" E	27° 16' 26.812" N
113			Auarahia			83° 49' 25.822" E	27° 16' 41.847" N
114			Kalanahi Kalan			83° 49' 5.683" E	27° 16' 22.713" N
115			Gularbhar			83° 47' 48.930" E	27° 15' 39.296" N
116			Chanda			83° 47' 47.621" E	27° 15' 12.154" N
117		Paniara	Jungal Jaralaha Urf Araj			83° 25' 26.932" E	27° 4' 45.055" N
118			Barbas			83° 22' 32.108" E	26° 59' 20.924" N
119			Ahirauli			83° 21' 19.663" E	26° 59' 6.054" N
120			Harakhpura			83° 20' 26.612" E	26° 59' 26.615" N
121			Domara			83° 20' 12.404" E	26° 58' 33.644" N
122			Sauraha			83° 22' 51.588" E	26° 58' 41.365" N
123			Gangi			83° 22' 31.108" E	26° 58' 6.993" N
124			Beltikara			83° 26' 50.432" E	26° 57' 27.239" N
125			Narakataha			83° 21' 17.503" E	26° 57' 46.353" N
126		Pharenda	Shahpur Jungle			83° 24' 45.335" E	27° 10' 46.507" N
127			Gokulpur			83° 24' 11.568" E	27° 10' 51.991" N
128			Mahuawa Sarvjeet			83° 24' 27.310" E	27° 10' 16.544" N
129			Pharenda Sarvjeet			83° 24' 16.392" E	27° 9' 47.127" N
130			Talhi			83° 24' 1.591" E	27° 9' 20.156" N

131			Harraiya			83° 24' 1.918" E	27° 8' 4.722" N
132			Panditpur			83° 23' 58.337" E	27° 7' 37.877" N
133			Bhainsihya			83° 24' 52.050" E	27° 7' 4.756" N
134			Bahadur Garh			83° 23' 59.257" E	27° 7' 13.620" N
135			Ramnagar 231 Nirnam Pach			83° 24' 0.459" E	27° 6' 22.153" N
136			Jhawakot			83° 25' 7.361" E	27° 5' 20.049" N

MAP FOR FLOOD AFFECTED AND WATERLOGGED AREAS ALONG ROHINI AND RAPTI RIVERS IN PARTS OF MAHARAJGANJ DISTRICT, U.P.
 (FLOOD AFFECTED AREA 6588 ha. AS ON 01 SEPTEMBER 2021)



Legend

- District Boundary
- Block Boundary
- Village Boundary
- Major Rivers
- Flood As on 01 Sep2021



Note :- Heavy Rain Inundated areas in parts of U.P (as on 01 Septembert 2021) received from NRSC/ISRO, Hyderabad.

