

List of flood affected near by villages in Mau District (U.P.) as on 26th July 2021

Flood affected blocks=03

Flood affected villages=69

Flood affected area=2933 ha.

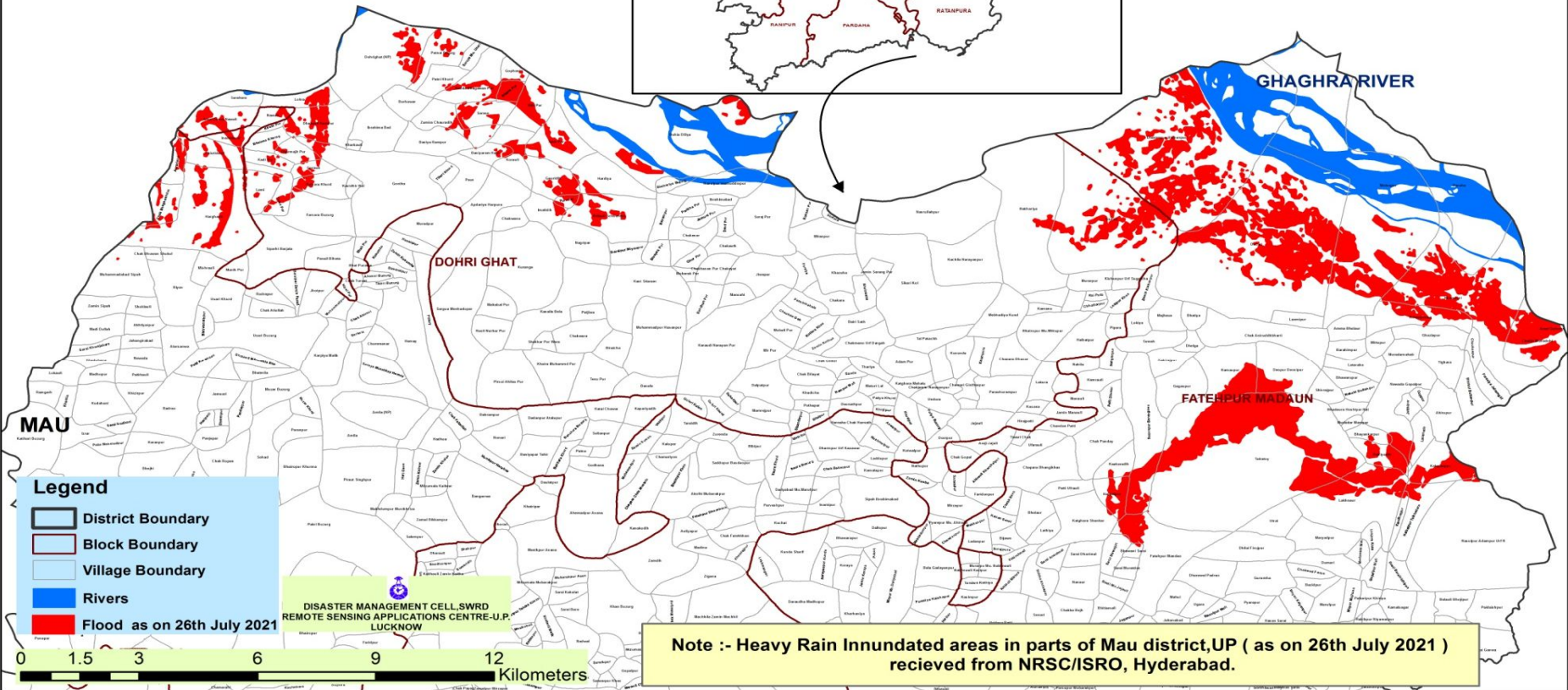
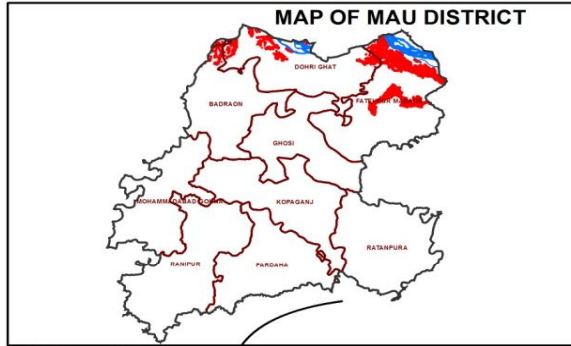
S.N.	DISTRICT	BLOCK	VILLAGE	BLOCK	VILLAGE	AFFECTED AREA (in Ha.)	LONGITUDE	LATITUDE
1	MAU	BADRAON	Nawali	3	69	2933	83°29' 2.001" E	26°14' 56.842" N
2			Inamidand				83°28' 28.222" E	26°14' 38.754" N
3			Chiutidand				83°28' 6.946" E	26°14' 23.564" N
4			Auradand				83°27' 33.101" E	26°14' 13.950" N
5			Harghauri				83°27' 59.796" E	26°13' 25.610" N
6			Chak Bhagawandas				83°27' 21.727" E	26°13' 38.484" N
7			Muhammadabad Sipah				83°26' 41.212" E	26°12' 34.124" N
8		DOHRI GHAT	Dohrihat (NP)				83°30' 38.827" E	26°15' 48.716" N
9			Patnai Bujurg				83°31' 38.192" E	26°15' 51.522" N
10			Rauda Bhagawan Pur				83°32' 10.967" E	26°15' 25.347" N
11			Gophani				83°32' 43.264" E	26°15' 33.892" N
12			Patni Khurd				83°31' 37.456" E	26°15' 27.433" N
13			Bibi Pur				83°33' 0.756" E	26°15' 1.993" N
14			Lohra				83°29' 30.771" E	26°15' 12.363" N
15			Dharm Pur				83°32' 40.155" E	26°15' 15.600" N
16			Arazi Deora Nawali				83°28' 11.519" E	26°14' 54.281" N
17			Zamira Chauradih				83°31' 46.582" E	26°14' 47.661" N
18			Dhanauli Rampur				83°29' 48.476" E	26°14' 48.902" N
19			Saraso				83°32' 15.715" E	26°14' 55.750" N
20			Basiya Rampur				83°31' 27.860" E	26°14' 30.679" N
21			Korauli				83°32' 42.459" E	26°14' 18.340" N
22			Bhainsa Kharag				83°28' 57.389" E	26°14' 34.178" N
23			Gontha				83°30' 43.600" E	26°13' 52.817" N
24			Dharmajit Pur				83°29' 23.398" E	26°14' 23.456" N
25			Basiyaram Kast				83°32' 18.726" E	26°14' 19.282" N
26			Kadi Pur				83°28' 57.458" E	26°14' 16.524" N
27			Gorauli				83°29' 37.472" E	26°14' 8.008" N
28			Taran Pur				83°29' 4.585" E	26°13' 49.279" N

29			Farsara Khurd			83°29' 49.265" E	26°13' 53.227" N
30			Lami			83°28' 49.514" E	26°13' 49.251" N
31			Duhia Diliya			83°35' 8.725" E	26°14' 32.983" N
32			Tahir Pur			83°33' 23.362" E	26°14' 28.448" N
33			Bakhariya			83°40' 30.371" E	26°13' 19.239" N
34			Sisawa			83°41' 41.410" E	26°13' 5.685" N
35			Hardiya			83°34' 7.413" E	26°13' 54.055" N
36			Gauridih			83°33' 16.110" E	26°13' 54.990" N
37			Imalidih			83°33' 7.898" E	26°13' 26.109" N
38			Belauli Sonbarasa			83°34' 13.660" E	26°13' 19.694" N
39			Purmoti			83°33' 29.847" E	26°13' 34.485" N
40			Parikha Pur			83°35' 23.906" E	26°13' 26.075" N
41			Chakesar			83°35' 24.673" E	26°13' 3.939" N
42			Farsara Buzurg			83°29' 43.524" E	26°13' 25.494" N
43	FATEHPUR MADAU		Dharampur Bishunpur			83°43' 2.632" E	26°14' 21.615" N
44			Dubari			83°44' 5.463" E	26°12' 43.043" N
45			Ramaupur			83°43' 31.417" E	26°10' 48.002" N
46			Baroha			83°46' 46.198" E	26°13' 33.600" N
47			Kuwarpurwa			83°46' 21.840" E	26°11' 33.710" N
48			Ghaziapur			83°46' 37.618" E	26°11' 16.901" N
49			Deopur Deosipur			83°44' 20.924" E	26°10' 47.154" N
50			Newada Gopalpur			83°46' 4.490" E	26°10' 16.015" N
51			Talratoy			83°43' 44.273" E	26°9' 26.730" N
52			Lauasadh			83°46' 24.429" E	26°9' 44.818" N
53			Bhayankarpur			83°45' 38.398" E	26°9' 46.785" N
54			Bairiyadih			83°45' 48.013" E	26°9' 28.089" N
55			Kaakaradih			83°41' 47.903" E	26°9' 24.301" N
56			Lakhnaur			83°45' 25.600" E	26°8' 46.312" N
57			Haibatpur Talkhadara			83°46' 18.688" E	26°8' 33.082" N
58			Kandhrapur			83°46' 3.377" E	26°8' 29.377" N
59			Sultanpur Barahgawa			83°42' 10.626" E	26°9' 56.435" N
60			Harpalpur			83°41' 42.791" E	26°8' 56.755" N
61			Katghara Shankar			83°41' 12.802" E	26°8' 33.019" N
62			Fatehpur Mandao			83°42' 23.905" E	26°7' 59.320" N

63			Sarai Mewagiri				83°41' 41.758" E	26°8' 3.487" N
64			Bhawani Sarai				83°42' 0.514" E	26°8' 4.469" N
65			Molnapur				83°45' 29.744" E	26°13' 35.119" N
66			Musadosi				83°47' 17.827" E	26°11' 50.110" N
67			Chakki Musadohi				83°48' 12.191" E	26°11' 9.869" N
68			Kalayanpur				83°46' 41.410" E	26°9' 16.697" N
69			Rasulpur Adampur Urf R				83°47' 14.508" E	26°8' 7.577" N

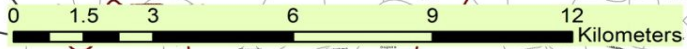
MAP FOR FLOOD AFFECTED & WATERLOGGED AREAS ALONG GHAGHRA RIVER IN PARTS OF MAU DISTRICT, U.P. AS ON 26th JULY 2021

TOTAL AFFECTED AREA = 2933 Ha.



- Legend**
- District Boundary
 - Block Boundary
 - Village Boundary
 - Rivers
 - Flood as on 26th July 2021

DISASTER MANAGEMENT CELL, SWRD
REMOTE SENSING APPLICATIONS CENTRE-U.P.
LUCKNOW



**Note :- Heavy Rain Innundated areas in parts of Mau district,UP (as on 26th July 2021)
recieved from NRSC/ISRO, Hyderabad.**