

List of flood affected near by villages in St. Kabirnagar District (U.P.) as on 26th July 2021

Flood affected blocks=03

Flood affected villages=39

Flood affected area=2380 ha.

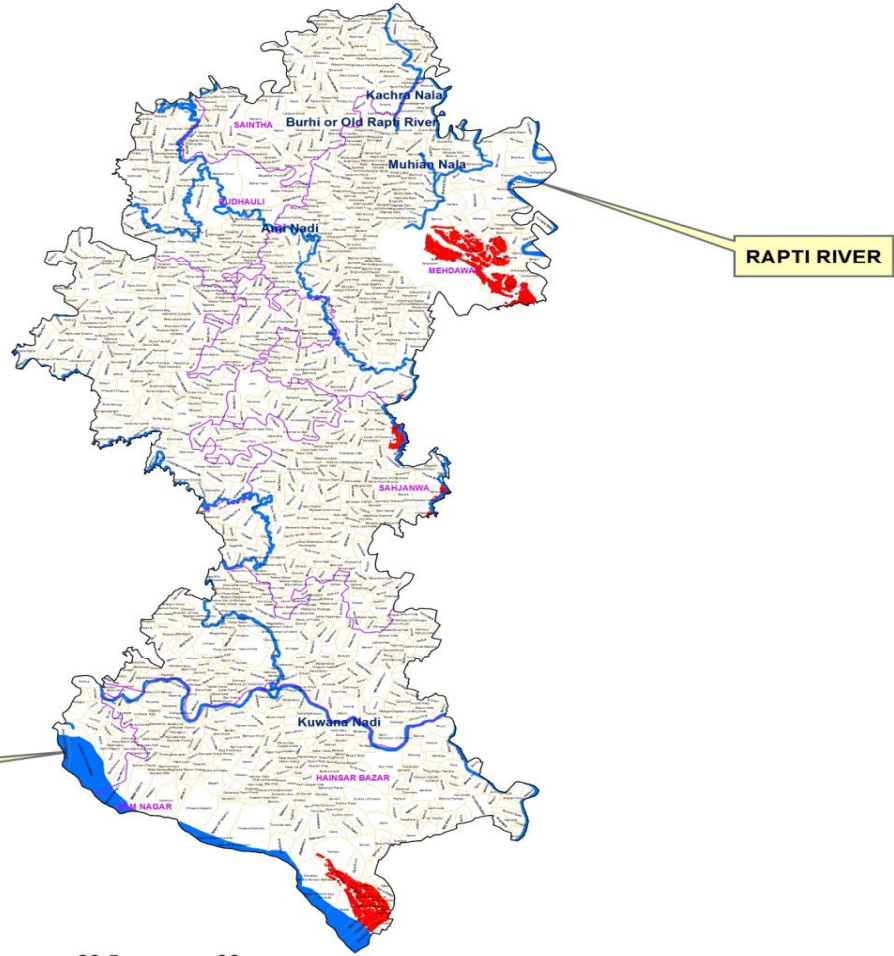
S.N.	DISTRICT	BLOCK	VILLAGE	BLOCK	VILLAGE	AFFECTED AREA (in Ha.)	LONGITUDE	LATITUDE
1	St.KABIR NAGAR	HAINSAR BAZAR	Rampur	3	39	2380	83°3' 22.967" E	26°28' 54.514" N
2			Dhamchia				83°3' 31.894" E	26°27' 45.302" N
3			Daulatpur				83°2' 20.675" E	26°27' 52.582" N
4			Aura Dand				83°4' 16.126" E	26°28' 14.502" N
5			Tighra				83°4' 57.006" E	26°27' 30.824" N
6			Gai Ghat				83°4' 15.642" E	26°27' 15.382" N
7			Siar Kalan				83°4' 40.405" E	26°27' 24.113" N
8			Karanpur				83°4' 56.136" E	26°26' 58.148" N
9			Bahra Dandi				83°5' 33.057" E	26°27' 6.159" N
10			Padari				83°3' 44.538" E	26°26' 22.530" N
11			Searam Adhin Singh				83°5' 13.199" E	26°26' 51.177" N
12			Sear Jot Bihari				83°5' 43.491" E	26°26' 44.976" N
13			Kathha Khair Garha				83°4' 58.738" E	26°26' 30.193" N
14			Kharagpur				83°5' 36.259" E	26°26' 27.025" N
15			Kanchanpur				83°5' 35.051" E	26°26' 38.337" N
16			Dhol Baja				83°4' 9.317" E	26°25' 46.963" N
17			Suarha				83°5' 23.882" E	26°26' 11.501" N
18			Gunwatia				83°5' 29.437" E	26°25' 44.718" N
19			Sarraiya				83°5' 39.562" E	26°26' 7.082" N
20			Chakdaha				83°4' 27.105" E	26°25' 35.466" N
21			Bhauwapar				83°4' 36.523" E	26°25' 9.489" N
22			Misraulia				83°2' 55.041" E	26°26' 58.486" N
23		KHALILABAD	Chak Pihai				83°6' 27.605" E	26°46' 40.373" N
24			Sarahi				83°6' 11.969" E	26°47' 22.155" N
25			Mohiuddinpur				83°8' 17.932" E	26°44' 35.482" N
26			Chhitauna				83°7' 19.034" E	26°43' 33.047" N
27			Maghar (NP)				83°7' 53.726" E	26°45' 18.938" N
28			Mohammadpur Kathar				83°7' 45.304" E	26°44' 14.681" N

29		MEHDAWAL	Barhow				83°8' 21.910" E	26°56' 37.797" N
30			Choraila				83°9' 43.769" E	26°55' 55.793" N
31			Dhanej				83°9' 57.167" E	26°55' 19.408" N
32			Boghra				83°9' 31.986" E	26°55' 3.937" N
33			Pachnewri				83°11' 20.049" E	26°55' 58.628" N
34			Bhaluha				83°10' 48.311" E	26°55' 34.046" N
35			Dhobaha				83°11' 18.445" E	26°55' 28.087" N
36			Gurchi Gulariha				83°11' 20.350" E	26°54' 53.147" N
37			Ghoorpali				83°11' 30.809" E	26°53' 35.269" N
38			Tarbarachh				83°8' 7.321" E	26°54' 38.529" N
39			Chaurikhas				83°6' 43.442" E	26°48' 59.225" N

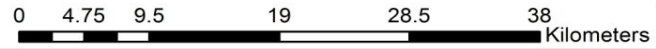
MAP FOR FLOOD AFFECTED AND WATERLOGGED AREAS ALONG GHAGHRA , AMI AND RAPTI RIVERS IN St. KABIRNAGAR DISTRICT, U.P AS ON 26th JULY 2021



TOTAL FLOOD AFFECTED AREA = 2380 ha



- Legend**
- District Boundary
 - Block Boundary
 - Village Boundary
 - Rivers/tributaries
 - Flood as on 26th July 2021



Note :- Heavy Rain Inundated areas in parts of St. kabir nagar ,U.P (as on 26th July 2021) received from NRSC/ISRO, Hyderabad.