

List of flood affected near by villages in Ballia District (U.P.) as on 26th July 2021

Flood affected blocks=08

Flood affected villages=97

Flood affected area=3174 ha.

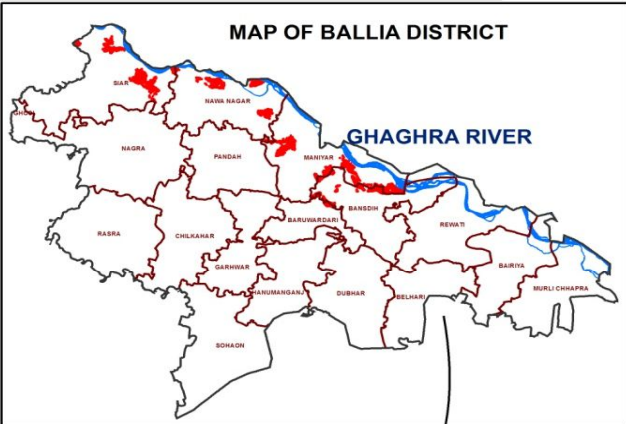
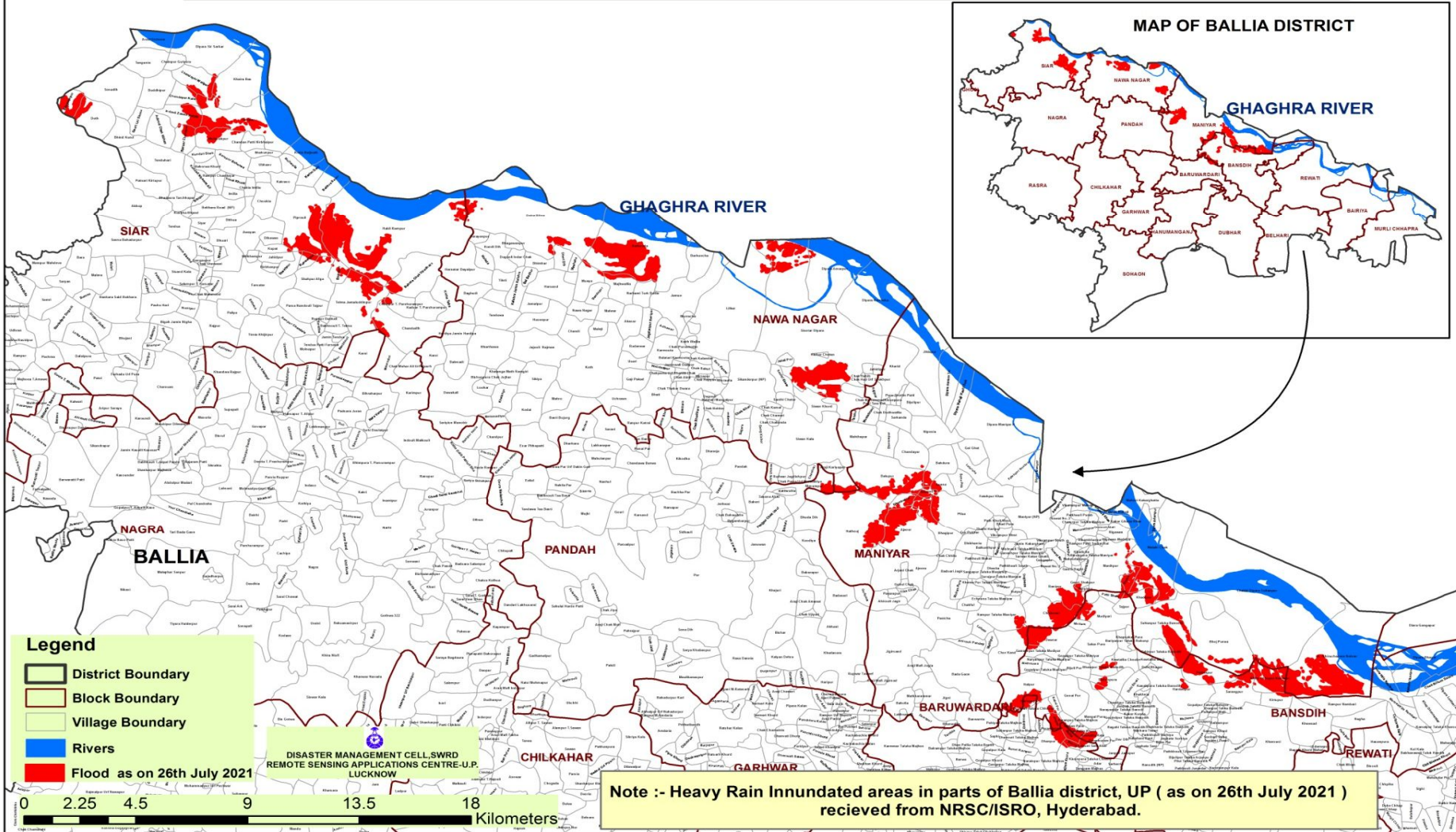
S.N.	DISTRICT	BLOCK	VILLAGE	BLOCK	VILLAGE	ECTED AREA (in	LONGITUDE	LATITUDE
1	BALLIA	BANSDIH	Bhagwanpur	8	97	3174	84°11' 30.268" E	25°57' 9.862" N
2			Patti Shahi				84°11' 59.065" E	25°57' 9.843" N
3			Tajpur				84°12' 17.504" E	25°56' 55.454" N
4			Mudiyari				84°11' 46.714" E	25°56' 40.510" N
5			Mukam				84°11' 11.793" E	25°56' 29.578" N
6			Dewrar				84°10' 33.907" E	25°56' 8.012" N
7			Ganeshpur Taluka Mudiyar				84°10' 4.738" E	25°55' 52.820" N
8			Kewtallia Choube				84°12' 17.974" E	25°55' 37.149" N
9			Bhawpur Taluka Bansdih				84°11' 45.926" E	25°55' 27.193" N
10			Rukunpura				84°11' 58.377" E	25°55' 8.770" N
11			Halpur				84°9' 49.546" E	25°54' 57.092" N
12			Dalpatpur				84°11' 47.684" E	25°54' 49.746" N
13			Kabel Pur				84°10' 33.492" E	25°54' 35.391" N
14			Mudiyari Taluka Chhitroo				84°10' 16.349" E	25°54' 29.338" N
15			Karanpur Taluka Majhos				84°10' 48.591" E	25°54' 14.083" N
16			Janpur				84°10' 31.366" E	25°54' 11.217" N
17			Saman Pura				84°10' 59.914" E	25°54' 3.197" N
18			Kewtallia Khurd				84°11' 9.511" E	25°53' 55.676" N
19			Kewtallia Kala				84°11' 26.135" E	25°53' 48.945" N
20			Parbatpur				84°14' 10.319" E	25°55' 16.433" N
21			Hardattpur				84°13' 29.201" E	25°54' 52.877" N
22			Khiru Chhapra Nambari				84°15' 42.524" E	25°55' 5.579" N
23			Sarangpur				84°14' 56.274" E	25°54' 47.427" N
24			Kirtupur				84°15' 53.516" E	25°54' 34.160" N
25			Khewsad				84°16' 37.284" E	25°53' 59.076" N
26		BARUWARDARI	Harizanpur				84°9' 56.019" E	25°54' 40.570" N
27			Chhitrouli				84°9' 48.064" E	25°54' 10.612" N
28			Pahiya Taluka Majhos				84°9' 26.871" E	25°54' 9.551" N
29			Porandarpur				84°10' 20.005" E	25°54' 6.426" N

30			Majha			84°10' 52.441" E	25°53' 52.212" N
31			Dhanpur			84°10' 23.455" E	25°53' 41.849" N
32			Bairria			84°10' 56.030" E	25°53' 36.822" N
33			Talpuni Sani Abal			84°11' 18.317" E	25°53' 33.995" N
34			Majhos Khurd			84°10' 47.486" E	25°53' 12.370" N
35		MANIYAR	Chandayar			84°7' 14.248" E	26°0' 45.653" N
36			Balupur			84°6' 34.275" E	26°0' 11.430" N
37			Hathouj			84°5' 44.145" E	25°58' 51.272" N
38			Bahdura			84°7' 55.693" E	26°0' 28.584" N
39			Asana			84°7' 59.768" E	25°59' 57.315" N
40			Dhanauti			84°7' 36.707" E	25°59' 46.739" N
41			Dhuraudha			84°7' 0.132" E	25°59' 34.637" N
42			Bhagipur			84°7' 49.151" E	25°58' 57.844" N
43			Ajaour			84°7' 8.025" E	25°58' 47.147" N
44			Pilue			84°8' 21.961" E	25°59' 16.433" N
45			Ranipur			84°10' 43.141" E	25°57' 25.108" N
46			Rampur Taluka Maniyar			84°9' 18.608" E	25°56' 46.280" N
47			Chor Kand			84°9' 26.737" E	25°55' 51.229" N
48			Manikpur			84°11' 59.260" E	25°57' 54.078" N
49			Kotwa			84°12' 25.044" E	25°57' 33.022" N
50			Gauri Shahpur			84°11' 16.629" E	25°57' 30.262" N
51			Durgipur			84°11' 21.210" E	25°57' 21.034" N
52			Khadipur			84°12' 46.472" E	25°57' 6.731" N
53			Chhitooni			84°10' 26.851" E	25°56' 46.862" N
54			Tahirpur Taluka Bansdih			84°13' 10.750" E	25°55' 47.467" N
55			Malahi Chak			84°13' 10.729" E	25°58' 18.266" N
56			Sultanpur Taluka Bansdih			84°13' 25.381" E	25°56' 28.754" N
57			Bhoj Purwa			84°14' 33.974" E	25°56' 0.161" N
58			A. Khiruchapara Nobrar			84°17' 25.237" E	25°55' 35.351" N
59			Chakki Diyara Sultanpur			84°15' 28.019" E	25°57' 12.961" N
60		NAGRA	Karni			83°54' 4.745" E	26°3' 24.897" N
61		NAWA NAGAR	Dhori Dih			83°58' 56.654" E	26°5' 37.629" N
62			Duha Bihra			83°58' 14.113" E	26°6' 41.145" N
63			Mueya			83°59' 31.222" E	26°5' 3.764" N

64			Majhwallia			84°0' 20.854" E	26°4' 52.960" N
65			Kathooda			84°0' 50.756" E	26°5' 50.300" N
66			Sisotar Diyara			84°4' 56.837" E	26°3' 44.802" N
67			Diyara Amarpur			84°5' 27.477" E	26°5' 13.658" N
68			Lilkar			84°3' 2.553" E	26°4' 19.257" N
69			Narhami Turk Ballia			84°0' 53.494" E	26°4' 43.859" N
70			Siwan Khurd			84°4' 56.765" E	26°1' 59.702" N
71			Son Purwa			84°5' 36.426" E	26°0' 3.733" N
72		PANDAH	Masumpur			84°4' 40.546" E	25°59' 55.089" N
73		SIAR	Chainpur T. Parshurampur			83°55' 1.971" E	26°4' 34.326" N
74			Haldi Rampur			83°54' 51.914" E	26°6' 25.296" N
75			Bahuta Chak Upadhaya			83°55' 24.612" E	26°5' 17.394" N
76			Bhagwanpur			83°47' 9.447" E	26°9' 38.383" N
77			Chandayar Walipur			83°50' 12.153" E	26°10' 8.105" N
78			Chandayar Kala			83°49' 51.850" E	26°9' 45.187" N
79			Diyara Sir Sarkar			83°50' 36.404" E	26°10' 55.440" N
80			Khaira Bas			83°51' 23.082" E	26°10' 8.904" N
81			Indauli Zamin Indalli			83°49' 52.392" E	26°9' 17.477" N
82			Sikroor Chandour			83°49' 53.822" E	26°8' 41.888" N
83			Mubarakpur			83°50' 43.958" E	26°8' 41.654" N
84			Turtipar			83°51' 35.979" E	26°9' 8.196" N
85			Sonadih			83°48' 15.411" E	26°9' 55.866" N
86			Doth			83°47' 45.268" E	26°9' 14.801" N
87			Piprouli			83°52' 42.045" E	26°6' 41.562" N
88			Kupat			83°51' 57.367" E	26°6' 0.124" N
89			Shekhpur			83°52' 21.219" E	26°5' 33.917" N
90			Kunwarpur			83°52' 47.460" E	26°5' 42.535" N
91			Shahpur Afga			83°53' 0.536" E	26°5' 14.391" N
92			Bhantpur			83°53' 32.469" E	26°5' 23.537" N
93			Telma Jamaluddinpur			83°53' 57.559" E	26°4' 39.387" N
94			Chandadih			83°55' 6.642" E	26°4' 0.215" N
95			Mahendua			83°54' 39.310" E	26°3' 10.411" N
96		FATEHPUR MADAU	Kalayanpur			83°46' 41.410" E	26°9' 16.697" N
97			Rasulpur Adampur Urf R			83°47' 14.508" E	26°8' 7.577" N

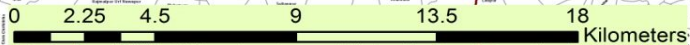
MAP FOR FLOOD AFFECTED & WATERLOGGED AREAS ALONG GHAGHRA RIVER IN PARTS OF BALLIA DISTRICT, U.P. AS ON 26th JULY 2021

TOTAL AFFECTED AREA = 3174 Ha.



- Legend**
- District Boundary
 - Block Boundary
 - Village Boundary
 - Rivers
 - Flood as on 26th July 2021

DISASTER MANAGEMENT CELL, SWRD
REMOTE SENSING APPLICATIONS CENTRE-U.P.
LUCKNOW



Note :- Heavy Rain Innundated areas in parts of Ballia district, UP (as on 26th July 2021) recieved from NRSC/ISRO, Hyderabad.