

**List of flood affected near by villages in Deoria District (U.P.) as on 4th Aug. 2021**

**Flood affected blocks=6**

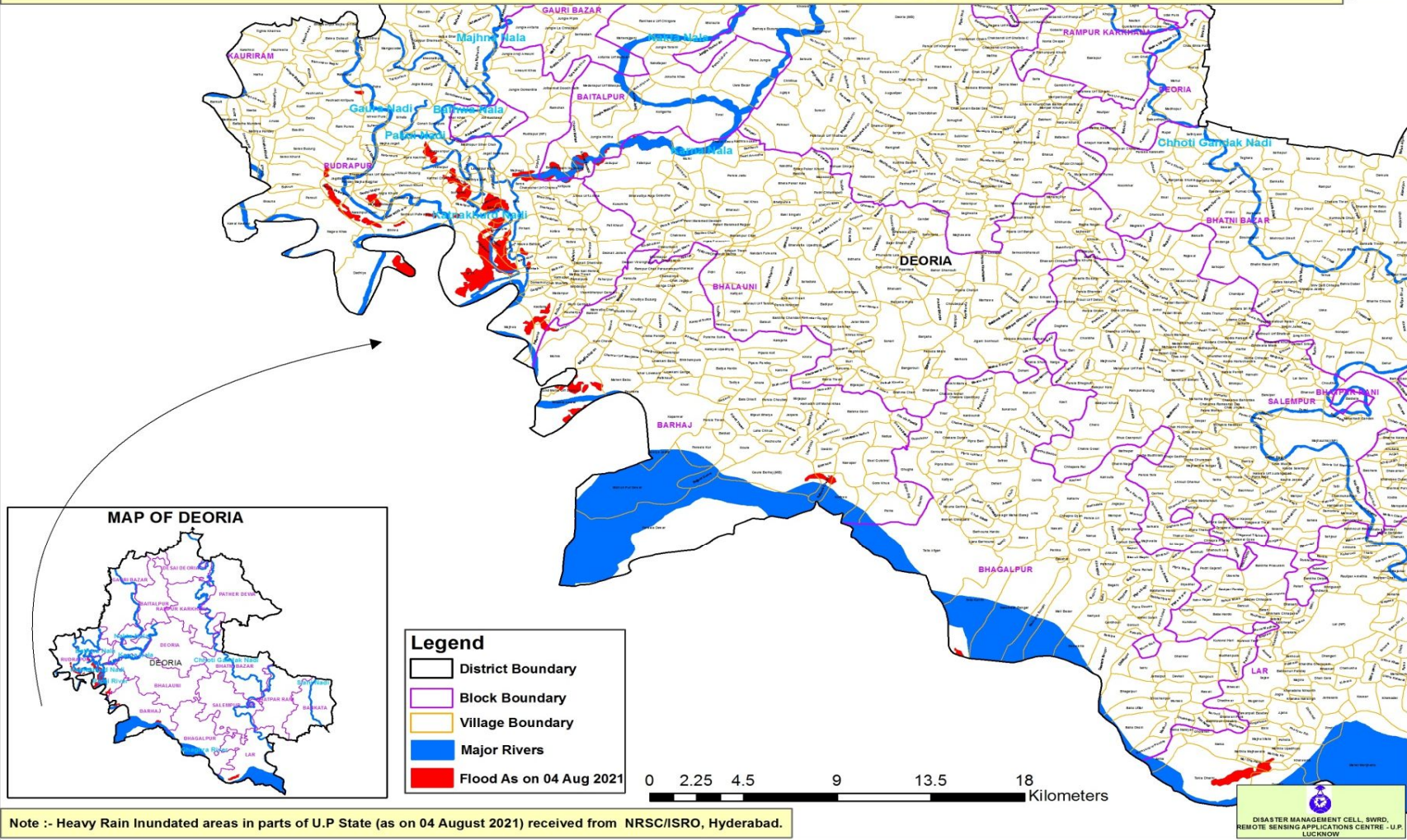
**Flood affected villages=62**

**Flood affected area=1275 ha.**

S.N.	DISTRICT	BLOCK	VILLAGE	BLOCK	VILLAGE	AFFECTED AREA ( in Ha.)	LONGITUDE	LATITUDE
1	DEORIA	BAITALPUR	Jungle Imiliha	6	62	1275	83°39' 6.802" E	26°26' 43.855" N
2			Barhara				83°37' 51.579" E	26°25' 43.402" N
3			Karmel Banrahi				83°38' 38.528" E	26°25' 49.432" N
4			Harhi Nadolava				83°38' 16.999" E	26°25' 34.525" N
5		BARHAJ	Bhadila Awwal				83°38' 11.575" E	26°18' 49.078" N
6			Kund Mahal Urf Dhanya				83°37' 45.010" E	26°19' 10.233" N
7			Mahen Babu				83°39' 30.652" E	26°19' 27.992" N
8			Gaura Barhaj (MB)				83°43' 37.578" E	26°16' 47.689" N
9			Samogar				83°38' 2.588" E	26°20' 53.108" N
10			Baraka Gaon				83°45' 42.943" E	26°18' 37.261" N
11			Raipura Chacklal				83°44' 48.852" E	26°16' 23.600" N
12			Kotawa				83°45' 15.932" E	26°16' 5.341" N
13		BHAGALPUR	Telia Kurmi				83°48' 56.173" E	26°13' 6.552" N
14		BHALAUNI	Fatehpur				83°40' 2.060" E	26°25' 43.515" N
15			Jadupur				83°39' 21.865" E	26°25' 43.506" N
16		LAR	Mathila Hil				83°56' 32.794" E	26°8' 38.185" N
17			Mal Dharhara				83°56' 14.005" E	26°8' 23.329" N
18			Takia Dharhi				83°54' 47.712" E	26°8' 1.462" N
19			Dumari				83°56' 37.935" E	26°7' 48.350" N
20		RUDRAPUR	Pidra				83°33' 15.018" E	26°27' 55.318" N
21			Pachladi Kritpura				83°32' 25.785" E	26°27' 31.607" N
22			Sarao Buzurg				83°31' 29.717" E	26°26' 8.116" N
23			Sarao Khurd				83°31' 11.896" E	26°25' 48.649" N
24			Bheri				83°31' 8.252" E	26°25' 23.562" N
25			Jagdishpur				83°32' 19.310" E	26°25' 16.728" N
26			Bahara Dalpatpur				83°32' 12.929" E	26°24' 53.603" N
27			Nagwa Khas				83°31' 49.834" E	26°23' 45.046" N
28			Ranipur				83°34' 24.720" E	26°26' 24.380" N
29			Gopalpur				83°37' 24.787" E	26°25' 51.697" N

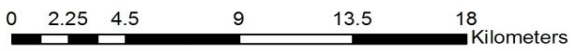
30			Bhagwanpur			83°35' 0.018" E	26°26' 1.282" N
31			Pipra Kachhar			83°34' 17.232" E	26°25' 52.599" N
32			Majhauri			83°36' 55.077" E	26°25' 34.308" N
33			Vitthalpur			83°35' 2.760" E	26°25' 35.959" N
34			Kanhai Chak			83°34' 52.254" E	26°25' 17.190" N
35			Tal Chanda			83°35' 25.955" E	26°25' 10.697" N
36			Dala			83°36' 50.622" E	26°24' 37.151" N
37			Sarya			83°36' 58.699" E	26°25' 8.787" N
38			Kritpura			83°38' 9.763" E	26°25' 3.274" N
39			Chakwahar Urf Chakwa			83°37' 30.829" E	26°25' 0.512" N
40			Sonbarsa			83°35' 26.413" E	26°24' 52.091" N
41			Lakhanpur			83°36' 9.718" E	26°24' 38.211" N
42			Sachauli Patwaniya			83°34' 38.951" E	26°24' 19.051" N
43			Malahpurwa			83°35' 37.889" E	26°24' 15.807" N
44			Birmapur			83°36' 22.184" E	26°24' 15.600" N
45			Pirhani			83°37' 5.028" E	26°23' 50.749" N
46			Belurghat			83°36' 14.730" E	26°23' 34.041" N
47			Jot Belaura			83°36' 0.566" E	26°23' 18.755" N
48			Kaithwalia			83°36' 26.624" E	26°23' 48.683" N
49			Seetal Majha			83°33' 5.943" E	26°24' 52.304" N
50			Narainpur Aurai			83°32' 52.154" E	26°24' 19.874" N
51			Majha Bhimsen			83°33' 22.410" E	26°24' 32.138" N
52			Bhirwa			83°33' 40.776" E	26°23' 49.122" N
53			Dadhiya			83°32' 59.727" E	26°22' 32.169" N
54			Nakil			83°35' 38.433" E	26°22' 30.191" N
55			Nauwa Bahbaj			83°37' 12.684" E	26°23' 21.933" N
56			Sikariya			83°36' 45.476" E	26°23' 17.510" N
57			Islamabad			83°37' 6.791" E	26°22' 56.006" N
58			Bishunpur			83°36' 44.102" E	26°22' 55.300" N
59			Sonbah			83°37' 19.838" E	26°22' 38.658" N
60			Keotalia			83°37' 27.164" E	26°21' 34.029" N
61			Majhwa			83°36' 50.998" E	26°20' 58.720" N
62			Patwania			83°37' 24.536" E	26°20' 33.479" N

**MAP FOR FLOOD AFFECTED AND WATERLOGGED AREAS ALONG GHAGHRA AND RAPTI RIVER IN PARTS OF DEORIA DISTRICT, U.P.  
( FLOOD AFFECTED AREA 1275 ha. AS ON 04 AUGUST 2021 )**



**Legend**

- District Boundary
- Block Boundary
- Village Boundary
- Major Rivers
- Flood As on 04 Aug 2021



Note :- Heavy Rain Inundated areas in parts of U.P State (as on 04 August 2021) received from NRSC/ISRO, Hyderabad.

