

List of flood affected near by villages in Kasganj District (U.P.) as on 2nd Aug. 2021

Flood affected blocks=02

Flood affected villages=56

Flood affected area=3262 ha.

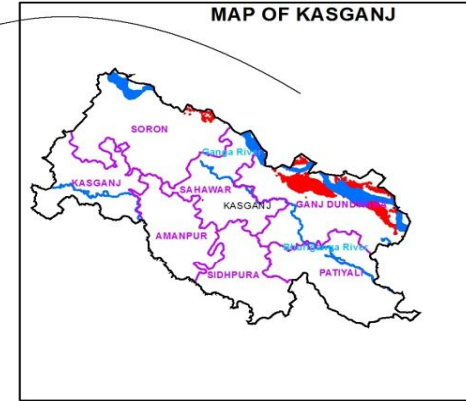
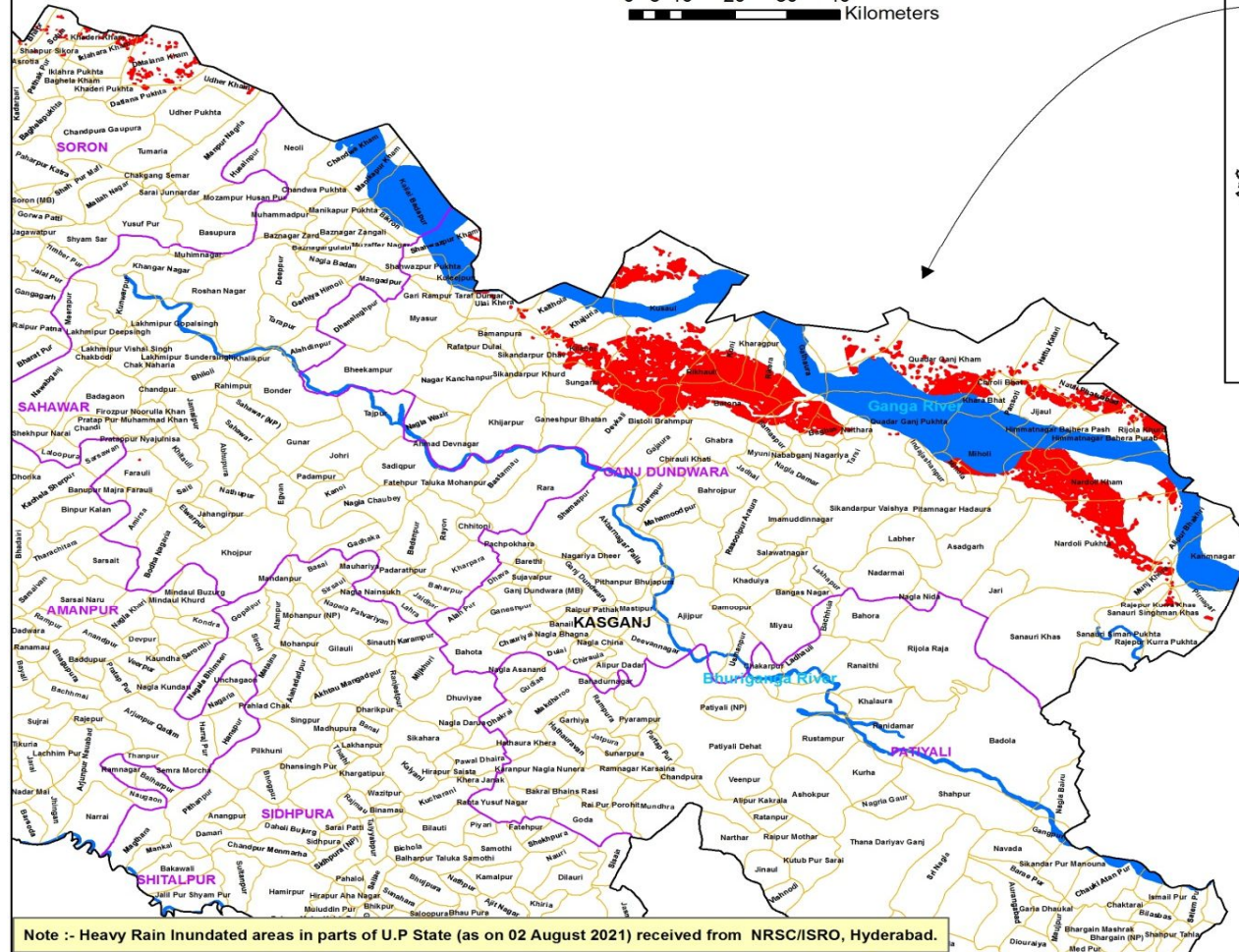
S.N.	DISTRICT	BLOCK	VILLAGE	BLOCK	VILLAGE	AFFECTED AREA (in Ha.)	LONGITUDE	LATITUDE
1	KASGANJ	GANJ DUNDWARA	Shahwazpur Kham	2	56	3262	78°54' 39.449" E	27°52' 7.615" N
2			Kusaul				78°59' 18.090" E	27°50' 30.541" N
3			Devkali				78°58' 14.151" E	27°47' 50.195" N
4			Kaithola				78°56' 54.645" E	27°50' 36.062" N
5			Khajuria				78°57' 32.155" E	27°50' 20.265" N
6			Kilauni				78°57' 40.403" E	27°49' 41.306" N
7			Sungarhi				78°57' 28.177" E	27°48' 47.630" N
8			Ulai Khera				78°55' 41.995" E	27°50' 38.025" N
9			Kuleejpur				78°54' 59.479" E	27°51' 15.325" N
10			Gari Rampur Taraf Dungar				78°54' 53.661" E	27°50' 45.882" N
11			Sikandarpur Dhav				78°56' 23.269" E	27°49' 36.948" N
12			Quadar Ganj Kham				79°5' 9.677" E	27°49' 20.762" N
13			Chiroli Bhat				79°6' 23.223" E	27°48' 47.699" N
14			Khara Bhat				79°5' 59.266" E	27°48' 22.093" N
15			Pansoti				79°6' 41.597" E	27°48' 17.207" N
16			Quadar Ganj Pukhta				79°4' 6.996" E	27°47' 51.995" N
17			Miholi				79°6' 0.282" E	27°47' 13.334" N
18			Mihola				79°5' 26.192" E	27°46' 39.899" N
19			Sundrayan				79°3' 15.894" E	27°49' 47.711" N
20			Sultanpur				79°2' 3.457" E	27°48' 0.761" N
21			Bagbas				79°2' 35.567" E	27°47' 37.173" N
22			Naithara				79°3' 20.563" E	27°47' 43.197" N
23			Kharagpur				79°1' 8.835" E	27°49' 39.374" N
24			Koni				79°0' 39.002" E	27°49' 31.593" N
25			Gathaura				79°2' 2.948" E	27°49' 13.411" N
26			Rikera				79°1' 26.648" E	27°49' 9.142" N
27			Rikhauli				79°0' 2.084" E	27°49' 2.610" N
28			Barona				79°0' 31.161" E	27°48' 16.653" N

29			Bistoli Brahmipur				78°58' 54.307" E	27°47' 52.904" N
30			Gajaura				78°59' 4.389" E	27°47' 18.754" N
31			Samaspur				79°1' 28.977" E	27°47' 34.409" N
32			Ghabra				79°0' 19.506" E	27°47' 25.642" N
33			Dharmipur				78°58' 58.732" E	27°46' 11.881" N
34			Rijola Khurd				79°9' 32.579" E	27°47' 45.268" N
35			Himmatnagar Bajhera Pash				79°7' 37.926" E	27°47' 26.960" N
36			Himmatnagar Bahera Purab				79°8' 38.079" E	27°47' 25.358" N
37			Munj Khera				79°9' 38.157" E	27°44' 6.822" N
38			Rajepur Kurra Khas				79°9' 59.620" E	27°43' 30.643" N
39			Hattu Katari				79°7' 27.416" E	27°49' 29.202" N
40			Nauli Phatuabad				79°8' 15.513" E	27°48' 31.745" N
41			Jijaul				79°7' 15.580" E	27°48' 2.320" N
42			Nardoli Kham				79°8' 25.924" E	27°46' 30.637" N
43			Alipur Bhakhri				79°10' 25.196" E	27°45' 31.631" N
44			Nardoli Pukhta				79°8' 13.698" E	27°44' 58.748" N
45			Karimnagar				79°10' 57.420" E	27°44' 39.816" N
46			Pirnagar				79°10' 43.990" E	27°43' 32.441" N
47		SORON	Bhilor				78°45' 42.378" E	27°57' 1.839" N
48			Sotua				78°46' 14.752" E	27°57' 4.120" N
49			Ratana Bhoj				78°44' 56.878" E	27°56' 58.985" N
50			Iklahara Kham				78°47' 18.415" E	27°56' 31.301" N
51			Shahpur Sikora				78°46' 27.598" E	27°56' 42.642" N
52			Khaderi Kham				78°47' 6.900" E	27°56' 58.475" N
53			Datalana Kham				78°48' 29.540" E	27°56' 27.027" N
54			Datlana Pukhta				78°48' 2.301" E	27°55' 30.678" N
55			Udher Pukhta				78°49' 14.929" E	27°55' 12.010" N
56			Udher Kham				78°49' 48.229" E	27°55' 51.130" N

**MAP FOR FLOOD AFFECTED AND WATERLOGGED AREAS ALONG GANGA RIVER IN PARTS OF KASGANJ DISTRICT, U.P.
(FLOOD AFFECTED AREA 3262 ha. AS ON 02 AUGUST 2021)**



0 5 10 20 30 40
Kilometers



Legend

- District Boundary
- Block Boundary
- Village Boundary
- Major Rivers
- Flood As on 02 Aug 2021

Note :- Heavy Rain Inundated areas in parts of U.P State (as on 02 August 2021) received from NRSC/ISRO, Hyderabad.

