

List of flood affected near by villages in Siddharthnagar District (U.P.) as on 24th Aug. 2021

Flood affected blocks=12

Flood affected villages=451

Flood affected area= 12855 ha.

S.N.	DISTRICT	BLOCK	VILLAGE	BLOCK	VILLAGE	AFFECTED AREA (in Ha.)	LONGITUDE	LATITUDE
1	SIDDHARTH NAGAR	BANSI	Chetia	12	451	12855	82° 54' 7.176" E	27° 15' 1.969" N
2			Subhauri				82° 56' 9.044" E	27° 16' 16.097" N
3			Mahuwari				82° 56' 30.612" E	27° 16' 23.659" N
4			Sirsia Tiwari				82° 56' 29.754" E	27° 15' 46.945" N
5			Bhagautapur				82° 58' 40.891" E	27° 14' 15.293" N
6			Nagwa				82° 58' 24.608" E	27° 13' 54.821" N
7			Kamharia Buzurg				82° 58' 8.685" E	27° 13' 29.216" N
8			Babhital				82° 58' 45.887" E	27° 12' 50.200" N
9			Tarwal Ghat				83° 1' 13.214" E	27° 11' 44.202" N
10			Phulpur				83° 0' 41.638" E	27° 11' 55.612" N
11			Bhanawari				83° 0' 29.059" E	27° 11' 20.179" N
12			Bhujrai				83° 1' 5.318" E	27° 10' 50.251" N
13			Datrangwa				83° 1' 39.284" E	27° 11' 3.359" N
14			Hata Khurd				83° 2' 7.266" E	27° 10' 13.700" N
15			Kakrahwa				82° 51' 1.415" E	27° 15' 10.481" N
16			Ajgara				82° 52' 21.383" E	27° 14' 28.389" N
17			Sekhuia				82° 52' 4.028" E	27° 14' 2.394" N
18			Rehra				82° 53' 4.568" E	27° 13' 48.069" N
19			Pachhari Khas				82° 50' 29.846" E	27° 13' 53.875" N
20			Barharghat				82° 54' 5.006" E	27° 13' 48.294" N
21			Babhanighat				82° 52' 25.326" E	27° 13' 42.425" N
22			Tiwaripur				82° 50' 12.733" E	27° 13' 19.771" N
23			Akoliha				82° 52' 47.739" E	27° 13' 23.083" N
24			Darawatakia				82° 48' 41.001" E	27° 13' 27.300" N
25			Baraon Nankar				82° 49' 22.338" E	27° 13' 11.637" N
26			Nihalwa				82° 53' 48.458" E	27° 13' 15.907" N
27			Pipri				82° 50' 41.956" E	27° 13' 17.122" N

28			Nathua Jot				82° 48' 45.717" E	27° 13' 9.169" N
29			Bargadawa				82° 53' 12.799" E	27° 13' 8.294" N
30			Khajuria				82° 51' 38.296" E	27° 13' 2.761" N
31			Mahua Khurd				82° 51' 5.105" E	27° 12' 56.706" N
32			Rainajot				82° 53' 25.291" E	27° 12' 52.541" N
33			Jajar Gathia				82° 52' 0.188" E	27° 12' 46.270" N
34			Kalawan Jot				82° 50' 30.895" E	27° 12' 52.789" N
35			Atramu Nankar				82° 52' 38.988" E	27° 12' 32.788" N
36			Jiwpur				82° 49' 10.102" E	27° 12' 38.002" N
37			Kishundhar Jot				82° 53' 9.523" E	27° 12' 35.882" N
38			Sri Belwa				82° 50' 36.092" E	27° 12' 33.224" N
39			Mau				82° 51' 55.331" E	27° 12' 3.768" N
40			Darhwa Adhin				82° 50' 55.034" E	27° 12' 31.742" N
41			Pipra				82° 51' 1.930" E	27° 12' 21.323" N
42			Darawa Lal				82° 50' 11.621" E	27° 12' 18.178" N
43			Tal Bhagniya				82° 52' 37.533" E	27° 12' 11.651" N
44			Chetia				82° 48' 58.446" E	27° 12' 3.939" N
45			Sekhui				82° 49' 38.885" E	27° 12' 2.862" N
46			Kolhui Buzurg				82° 50' 39.229" E	27° 11' 40.181" N
47			Kolhua				82° 50' 12.993" E	27° 11' 46.699" N
48			Majhari				82° 51' 20.614" E	27° 11' 39.553" N
49			Rma Tikra				82° 48' 59.088" E	27° 10' 55.358" N
50			Mechuka				82° 51' 52.583" E	27° 11' 10.540" N
51			Mandhara Pur				82° 51' 1.539" E	27° 11' 16.121" N
52			Amghati				82° 50' 3.440" E	27° 11' 15.387" N
53			Bale Jinwa				82° 49' 27.235" E	27° 11' 7.627" N
54			Bhainsath				82° 50' 17.881" E	27° 10' 59.772" N
55			Jalhe Khor				82° 51' 13.006" E	27° 10' 37.568" N
56			Magargaha				82° 49' 50.332" E	27° 10' 34.737" N
57			Bimauwa Buzurg				82° 50' 22.485" E	27° 10' 17.308" N
58			Majhwan Kalna				82° 53' 24.051" E	27° 12' 15.702" N
59			Miya Jot				82° 53' 45.189" E	27° 12' 10.564" N
60			Gothawa				82° 53' 9.055" E	27° 11' 49.162" N
61			Harha				82° 52' 40.907" E	27° 11' 40.331" N

62			Telaura			82° 52' 38.318" E	27° 10' 58.369" N
63			Darwa Ghat			82° 51' 53.387" E	27° 10' 39.366" N
64			Ganwaria			82° 57' 50.651" E	27° 13' 8.389" N
65			Gulriha Raja			82° 59' 22.258" E	27° 11' 58.997" N
66			Bakunaw			83° 0' 8.072" E	27° 11' 53.237" N
67			Bhagautapur			82° 59' 0.978" E	27° 11' 28.770" N
68			Harraia Nankar			82° 58' 56.095" E	27° 10' 39.075" N
69			Pakardiha			83° 1' 15.898" E	27° 10' 14.606" N
70			Gonhadih			82° 59' 43.664" E	27° 10' 2.622" N
71			Hata Khas			83° 1' 44.554" E	27° 9' 21.659" N
72			Dasia			82° 54' 56.636" E	27° 14' 40.291" N
73			Chandegaria			82° 55' 30.874" E	27° 14' 39.308" N
74			Imlidiha			82° 55' 12.388" E	27° 14' 25.131" N
75			Bihra			82° 56' 15.409" E	27° 14' 15.417" N
76			Semra			82° 55' 38.509" E	27° 14' 12.861" N
77			Chanwartal			82° 55' 56.252" E	27° 13' 30.849" N
78			Taragujraulia			82° 56' 57.675" E	27° 13' 35.755" N
79			Gonhatal			82° 54' 38.253" E	27° 13' 19.370" N
80			Hayat Nagar			82° 55' 46.434" E	27° 13' 2.771" N
81			Janiajot			82° 56' 32.438" E	27° 12' 49.410" N
82			Bhakurahwa			82° 54' 30.319" E	27° 12' 40.204" N
83			Tirlokpur			82° 57' 3.495" E	27° 12' 25.036" N
84			Sonkhar			82° 58' 5.319" E	27° 12' 9.297" N
85			Natahawa			82° 55' 29.403" E	27° 12' 35.619" N
86			Bopalapur			82° 56' 17.505" E	27° 12' 12.969" N
87			Basantpur			82° 55' 18.491" E	27° 12' 9.807" N
88			Bansi (MB)			82° 55' 45.934" E	27° 11' 15.558" N
89			Kadmahwa			82° 58' 43.963" E	27° 9' 57.518" N
90			Kushalpur			82° 59' 1.124" E	27° 10' 6.961" N
91			Madhwapur			82° 59' 18.189" E	27° 9' 58.052" N
92		BARHNI BAZAR	Tal Kunda			82° 49' 16.143" E	27° 25' 47.411" N
93			Rekahat			82° 47' 19.804" E	27° 25' 23.327" N
94			Semari Urf Gulargajawa			82° 47' 48.035" E	27° 24' 59.851" N
95			Khairi Shital Prasad			82° 49' 0.980" E	27° 24' 42.843" N

96			Khairi Urf Bhujahawa			82° 51' 10.983" E	27° 23' 32.063" N
97		BHANWAPUR	Nawdih			82° 30' 6.859" E	27° 21' 19.749" N
98			Arjunpur			82° 29' 34.460" E	27° 20' 31.025" N
99			Sigar Jot Mustahkam			82° 29' 2.403" E	27° 19' 34.623" N
100			Sigar Jot Ahatmali			82° 29' 25.767" E	27° 19' 23.037" N
101			Bauna Jot			82° 31' 18.524" E	27° 18' 54.791" N
102			Bisunpur Awrangabad			82° 29' 57.670" E	27° 18' 23.741" N
103			Dariya Baksh Urf Bhag Nag			82° 29' 42.198" E	27° 17' 51.555" N
104			Judi Kuiya			82° 30' 57.674" E	27° 17' 45.612" N
105			Patwariya			82° 34' 46.365" E	27° 23' 15.262" N
106			Rohawn Bujurg			82° 31' 21.915" E	27° 20' 22.059" N
107			Kurthi Diha			82° 30' 34.499" E	27° 20' 49.209" N
108			Shital Bhita			82° 31' 3.215" E	27° 20' 48.469" N
109			Sikanderpur			82° 30' 6.237" E	27° 20' 40.086" N
110			Dakhinahwa			82° 30' 6.121" E	27° 20' 14.403" N
111			Gangapur			82° 30' 50.397" E	27° 19' 29.611" N
112			Manikaura Manikauri			82° 31' 18.095" E	27° 19' 41.290" N
113			Gulariha			82° 31' 39.939" E	27° 19' 28.614" N
114			Ijarahwa			82° 32' 6.060" E	27° 18' 57.763" N
115			Mohamadpur			82° 31' 40.344" E	27° 18' 27.838" N
116			Ratanpur			82° 32' 45.383" E	27° 18' 32.583" N
117			Baghmarwa			82° 33' 55.326" E	27° 18' 23.989" N
118			Pat Khauli Maufi			82° 33' 23.579" E	27° 18' 21.826" N
119			Oinia			82° 32' 33.814" E	27° 18' 2.775" N
120			Lewartal			82° 35' 37.712" E	27° 17' 24.398" N
121			Vijaura			82° 30' 52.381" E	27° 18' 23.806" N
122			Belwa			82° 31' 17.965" E	27° 18' 7.373" N
123			Tanrawa			82° 33' 46.567" E	27° 17' 44.910" N
124			Asharhi			82° 31' 44.122" E	27° 17' 43.369" N
125			Mubrakupur			82° 32' 48.076" E	27° 17' 12.963" N
126			Khanta			82° 30' 31.357" E	27° 17' 29.082" N
127			Jeruia			82° 32' 9.010" E	27° 17' 18.869" N
128			Sakhuya Sanapati			82° 31' 11.812" E	27° 17' 13.758" N
129			Sikta			82° 33' 44.729" E	27° 16' 57.898" N

130		Lugra Diha				82° 31' 34.707" E	27° 17' 5.685" N
131		Kataria Babu				82° 34' 51.374" E	27° 16' 58.547" N
132		Bishunpur Hari				82° 31' 57.035" E	27° 16' 51.476" N
133		Inawartal				82° 32' 54.509" E	27° 16' 33.701" N
134		Batnar Ahthmali				82° 29' 52.428" E	27° 17' 3.334" N
135		Batnar Mustacum				82° 30' 27.132" E	27° 16' 55.045" N
136		Jahda Mustahkam				82° 30' 39.905" E	27° 15' 39.356" N
137		Ramwapur Jagatram				82° 31' 8.287" E	27° 16' 9.720" N
138		Keshwa Jot Ahatmali				82° 30' 57.081" E	27° 16' 13.927" N
139		Jahda Ahatmali				82° 30' 52.065" E	27° 15' 47.184" N
140		Gopia				82° 31' 24.986" E	27° 14' 42.154" N
141		Lohraula				82° 34' 21.363" E	27° 16' 11.554" N
142		Palesar				82° 34' 0.388" E	27° 15' 57.597" N
143		Malhwar				82° 33' 22.828" E	27° 15' 55.455" N
144		Chitahi				82° 33' 28.343" E	27° 15' 6.746" N
145		Tarhar				82° 32' 32.195" E	27° 14' 53.504" N
146		Siswa				82° 32' 33.117" E	27° 14' 17.491" N
147		Parsohia Sadanand				82° 30' 22.871" E	27° 14' 23.785" N
148		Jokha				82° 30' 56.960" E	27° 14' 4.173" N
149		Bikramjot				82° 30' 44.603" E	27° 14' 22.499" N
150		Rauth Dila Musthacum				82° 31' 21.915" E	27° 13' 58.118" N
151		Sisa				82° 32' 0.896" E	27° 14' 18.483" N
152		Bamdaye				82° 31' 27.605" E	27° 14' 11.678" N
153		Durga Joot				82° 31' 49.389" E	27° 13' 58.653" N
154		Rauth Diha Ahtamali				82° 31' 28.570" E	27° 13' 47.226" N
155		Mahwwa Bujurg				82° 35' 45.438" E	27° 16' 38.905" N
156		Kauthuti Ram				82° 36' 36.074" E	27° 16' 31.705" N
157		Lohrauli				82° 35' 0.684" E	27° 16' 20.732" N
158		Ganwaria Bujurg				82° 36' 9.922" E	27° 16' 11.864" N
159		Khamharia				82° 34' 21.396" E	27° 15' 21.963" N
160		Jeewarai				82° 34' 29.802" E	27° 14' 56.534" N
161		Maldha				82° 34' 9.849" E	27° 14' 27.098" N
162		Davariya Chaman				82° 33' 21.900" E	27° 14' 24.793" N
163		Semari				82° 34' 52.645" E	27° 14' 21.227" N

164		Denghajot Kasturi				82° 39' 54.854" E	27° 14' 13.224" N
165		Beni Nagar				82° 39' 24.252" E	27° 13' 59.708" N
166		Semari Ban Casya				82° 35' 21.487" E	27° 13' 58.660" N
167		Kathonia Pandey				82° 32' 57.935" E	27° 13' 58.391" N
168		Davalidiha Misir (610 No				82° 34' 31.910" E	27° 13' 47.838" N
169		Davliidiha Chaubey				82° 33' 32.911" E	27° 13' 45.349" N
170		Dhanohari				82° 37' 27.091" E	27° 13' 34.463" N
171		Madhukarpur Chaubey				82° 33' 59.854" E	27° 13' 45.897" N
172		Vijwar Barhai				82° 36' 40.334" E	27° 13' 17.765" N
173		Junayaniya				82° 32' 34.353" E	27° 13' 32.032" N
174		Sakhuy Goverdhen				82° 35' 52.182" E	27° 13' 38.986" N
175		Andua Snichara				82° 35' 25.529" E	27° 13' 14.156" N
176		Tatari				82° 34' 48.747" E	27° 13' 5.715" N
177		Tanduai				82° 33' 33.372" E	27° 13' 11.228" N
178		Badaya				82° 34' 11.069" E	27° 13' 13.575" N
179		Bilriya				82° 34' 22.683" E	27° 12' 46.622" N
180		Kohal Kundak				82° 33' 26.186" E	27° 12' 44.411" N
181		Padriya Jeet				82° 33' 54.923" E	27° 12' 47.142" N
182		Budihya Tayar				82° 35' 7.933" E	27° 12' 32.216" N
183		Bewa Mustancum				82° 31' 47.559" E	27° 13' 24.571" N
184		Parsohiya Tiwari				82° 30' 41.435" E	27° 20' 6.800" N
185		Saphipur				82° 30' 6.617" E	27° 19' 40.015" N
186		Madhucarpur Jagatram				82° 31' 21.502" E	27° 16' 37.728" N
187		Puraina				82° 30' 47.097" E	27° 16' 31.872" N
188		Kashwa Jot Mustacum				82° 30' 43.835" E	27° 16' 15.056" N
189		Bhandriya				82° 32' 18.808" E	27° 16' 15.780" N
190		Bahadurpur				82° 34' 21.089" E	27° 16' 34.119" N
191		Ujaniya				82° 32' 47.761" E	27° 16' 4.400" N
192		Kataria Pandey				82° 32' 0.365" E	27° 15' 30.887" N
193		Lelsara Nankar				82° 31' 30.476" E	27° 15' 35.521" N
194		Veerpur Jootfata Mohmad				82° 33' 55.664" E	27° 12' 14.315" N
195		Veerpurjoot Fateh Mohamad				82° 33' 19.654" E	27° 12' 4.346" N
196		Sirsia				82° 38' 6.527" E	27° 13' 34.553" N

197			Shahpur Ahatmali				82° 39' 17.377" E	27° 13' 11.586" N
198			Ramwapur Urf Nabua Ahtmal				82° 38' 30.345" E	27° 12' 52.507" N
199			Khurphahwa				82° 36' 5.670" E	27° 12' 55.029" N
200			Shahpur Mustakmm				82° 39' 52.215" E	27° 12' 47.473" N
201			Padari Ahtmali				82° 37' 24.170" E	27° 12' 46.438" N
202			Dhnohara				82° 37' 57.064" E	27° 12' 48.760" N
203			Machiya Ahatmali				82° 36' 43.774" E	27° 12' 36.635" N
204			Rudauliya				82° 35' 45.033" E	27° 12' 22.818" N
205			Fatehpur				82° 36' 14.267" E	27° 12' 21.316" N
206			Ramwapur/Nabuya Musthahca				82° 38' 3.295" E	27° 12' 24.092" N
207			Cohal Chak Ramwapur				82° 38' 46.628" E	27° 12' 14.450" N
208			Machiya Mustacum				82° 36' 48.921" E	27° 12' 17.301" N
209			Padari Mustacum				82° 37' 39.561" E	27° 12' 17.982" N
210			Bharwniya Mustacum				82° 34' 23.609" E	27° 12' 2.385" N
211			Bharawaniya Ahatmli				82° 35' 4.161" E	27° 11' 53.784" N
212			Dumariya				82° 35' 50.774" E	27° 11' 46.806" N
213			Pikora				82° 34' 22.083" E	27° 10' 59.646" N
214			Nahtuya				82° 33' 0.396" E	27° 13' 14.904" N
215			Asanhara Mafi				82° 31' 11.407" E	27° 12' 59.807" N
216			Kohal Goan Coat				82° 32' 16.691" E	27° 13' 5.372" N
217			Sultanpur/Chandan Joot				82° 32' 38.228" E	27° 13' 0.753" N
218		BIRDPUR	Birdpur NO.11				83° 6' 56.201" E	27° 19' 27.396" N
219		DOMARIYAGANJ	Dumeria Gang				82° 39' 17.162" E	27° 12' 12.254" N
220			Malimanha Ahatmli				82° 37' 38.000" E	27° 11' 55.869" N
221			Badhara Gagwar				82° 38' 18.269" E	27° 12' 2.384" N
222			Tanuhar				82° 37' 12.540" E	27° 11' 58.040" N
223			Sonkhar				82° 36' 28.335" E	27° 11' 31.441" N
224			Maadrha				82° 37' 12.103" E	27° 11' 25.418" N
225			Malimanha Mustkaham				82° 38' 5.569" E	27° 11' 24.565" N
226			Cosi Khurd Bujurg				82° 38' 59.303" E	27° 11' 31.450" N
227			Bithriya				82° 34' 48.429" E	27° 10' 30.156" N
228			Dhanyadeha				82° 35' 40.918" E	27° 11' 6.387" N

229			Gajni Jot Urph Rasulabad			82° 33' 53.633" E	27° 10' 35.390" N
230			Bhalvihi			82° 35' 38.572" E	27° 10' 37.129" N
231			Paraspur			82° 35' 58.909" E	27° 10' 11.088" N
232			Chaura			82° 35' 51.148" E	27° 9' 45.858" N
233			Bhararia			82° 33' 1.990" E	27° 10' 21.865" N
234			Rudrooliya			82° 39' 39.517" E	27° 11' 45.804" N
235			Baidaula Garh			82° 39' 36.091" E	27° 11' 11.488" N
236			Beerpur Ratnpur			82° 41' 14.847" E	27° 11' 0.556" N
237			Anduya			82° 40' 34.722" E	27° 11' 0.818" N
238			Sonhati			82° 40' 51.413" E	27° 10' 36.066" N
239			Jagdeeshpur			82° 41' 23.530" E	27° 10' 28.991" N
240			Seer Majhari			82° 43' 6.937" E	27° 12' 1.346" N
241			Bangaya Nankar			82° 43' 50.358" E	27° 12' 6.080" N
242			Sukrooliya			82° 44' 21.711" E	27° 12' 7.784" N
243			Baghadi			82° 46' 6.611" E	27° 11' 45.941" N
244			Penda			82° 47' 1.028" E	27° 11' 28.085" N
245			Mahwar Urph Bidihwa			82° 45' 10.846" E	27° 11' 43.662" N
246			Mahokhawa			82° 43' 50.885" E	27° 11' 41.848" N
247			Paranpur			82° 44' 45.752" E	27° 11' 26.933" N
248			Ramwapur			82° 47' 50.343" E	27° 10' 59.611" N
249			Chak Majhari			82° 43' 54.894" E	27° 11' 23.579" N
250			Rasulpur			82° 42' 27.530" E	27° 11' 8.859" N
251			Pipra			82° 43' 10.482" E	27° 11' 17.913" N
252		ITWA	Son Nagar			82° 42' 49.061" E	27° 24' 16.088" N
253			Semri Nankar			82° 44' 49.975" E	27° 24' 16.341" N
254			Vairiya Grant			82° 48' 35.822" E	27° 24' 1.594" N
255			Vairiya Khalsa			82° 47' 51.073" E	27° 23' 55.643" N
256			Khakhra			82° 49' 24.979" E	27° 23' 59.440" N
257			Narayanpur			82° 43' 57.483" E	27° 24' 23.302" N
258			Chagrihwa			82° 36' 40.305" E	27° 24' 12.810" N
259			Pach Mohni			82° 46' 9.949" E	27° 24' 18.672" N
260			Jhakahi			82° 45' 30.303" E	27° 23' 57.039" N
261			Persohan			82° 34' 26.827" E	27° 23' 34.955" N
262			Chechraf(Bujurg)			82° 49' 43.776" E	27° 23' 13.550" N

263			Siswa			82° 47' 43.410" E	27° 23' 15.105" N
264			Kamsai			82° 48' 45.137" E	27° 23' 15.001" N
265			Madrahna			82° 51' 6.403" E	27° 21' 54.110" N
266			Bhojwar			82° 49' 28.999" E	27° 21' 35.062" N
267			Tenua			82° 50' 22.022" E	27° 21' 27.784" N
268			Bajra Bhari			82° 50' 53.626" E	27° 20' 58.432" N
269			Kathela Janubi			82° 49' 25.559" E	27° 20' 5.641" N
270			Bhelauha			82° 44' 35.138" E	27° 23' 51.888" N
271		JOGIAKHAS	Dabara			82° 55' 13.882" E	27° 18' 50.974" N
272			Maharatha			82° 54' 13.076" E	27° 17' 12.356" N
273			Kulghwanpur			82° 54' 39.485" E	27° 17' 5.805" N
274			Khetawal Misra			82° 56' 11.345" E	27° 18' 53.171" N
275			Kusumhar			82° 55' 25.609" E	27° 18' 21.417" N
276			Deorihawa			82° 55' 53.890" E	27° 18' 6.163" N
277			Piparahwa			82° 56' 27.560" E	27° 17' 54.760" N
278			Majhawan			82° 56' 18.685" E	27° 17' 15.923" N
279			Gengati			82° 57' 8.877" E	27° 17' 11.890" N
280			Karajahwa			82° 58' 4.772" E	27° 17' 3.388" N
281			Karauda Masina			83° 1' 35.086" E	27° 15' 45.587" N
282			Sirasiya			83° 1' 40.802" E	27° 15' 6.483" N
283			Mechuka			82° 58' 19.318" E	27° 16' 27.190" N
284			Harakauli			82° 58' 7.111" E	27° 15' 52.394" N
285			Dohani			82° 58' 49.835" E	27° 15' 44.876" N
286			Majigawa			82° 59' 43.941" E	27° 15' 37.728" N
287			Bhitiya Raja			83° 0' 6.941" E	27° 15' 18.687" N
288			Koyara			82° 59' 27.070" E	27° 15' 2.090" N
289			Kunwarapar			83° 0' 30.835" E	27° 15' 14.128" N
290			Udai Pur			83° 0' 35.051" E	27° 14' 47.780" N
291			Gangawal			82° 59' 8.802" E	27° 14' 35.982" N
292			Jogiya			83° 1' 0.447" E	27° 14' 36.885" N
293			Tikari			83° 0' 6.144" E	27° 14' 37.076" N
294			Barahara			83° 1' 48.334" E	27° 14' 17.163" N
295			Lakhanapar			83° 1' 27.496" E	27° 14' 25.779" N
296			Haraiya			83° 2' 44.119" E	27° 14' 8.075" N

297			Barago			83° 0' 44.084" E	27° 12' 29.195" N
298			Banki			83° 2' 34.804" E	27° 12' 17.365" N
299			Puraina			83° 3' 22.541" E	27° 11' 50.789" N
300			Dhobaha			83° 1' 59.984" E	27° 12' 3.544" N
301			Tandiya Bazar			83° 2' 27.946" E	27° 11' 37.277" N
302			Semara Khurd			83° 2' 3.786" E	27° 11' 41.699" N
303			Marukharg Khurd			83° 1' 52.623" E	27° 11' 11.346" N
304			Khajur Dar			83° 4' 40.584" E	27° 11' 18.230" N
305			Dumariya Khurd			83° 2' 56.524" E	27° 11' 14.077" N
306			Tandiya Buzurg			83° 3' 32.175" E	27° 11' 6.880" N
307			Gayaghat			83° 5' 12.182" E	27° 10' 36.934" N
308			Pedari Khurd			83° 2' 25.304" E	27° 11' 2.867" N
309			Bhirauna Tal			83° 4' 41.895" E	27° 10' 53.390" N
310			Dhusawa			83° 4' 6.866" E	27° 10' 58.044" N
311			Harani Buzurg			83° 3' 7.011" E	27° 10' 44.608" N
312			Nathuapur			83° 2' 37.975" E	27° 10' 44.281" N
313			Itauwa			83° 3' 37.537" E	27° 10' 33.066" N
314			Riwa Nankar			83° 3' 49.835" E	27° 10' 13.452" N
315			Majhagawa			83° 2' 47.947" E	27° 10' 26.977" N
316			Bairawa Nankar			83° 4' 15.504" E	27° 10' 0.993" N
317			Patakhali			83° 2' 37.189" E	27° 9' 38.858" N
318			Jogiya			83° 2' 35.380" E	27° 10' 5.875" N
319			Harani Khurd			83° 2' 52.029" E	27° 10' 13.207" N
320			Gothawa			83° 3' 38.798" E	27° 9' 37.052" N
321			Sangal Dip			83° 2' 51.127" E	27° 9' 5.234" N
322		KHESRAHA	Talcorai			83° 5' 24.545" E	27° 9' 50.861" N
323			Dulahi			83° 4' 12.630" E	27° 9' 17.950" N
324			Dadia Khurd			83° 3' 43.178" E	27° 9' 8.685" N
325			Matiyaria			83° 0' 36.934" E	27° 9' 42.603" N
326			Bisunpura Ahatmali			83° 1' 2.062" E	27° 8' 56.916" N
327			Sisahania			83° 0' 25.141" E	27° 9' 3.023" N
328			Banjaraha Buzurg			83° 3' 0.483" E	27° 8' 41.156" N
329			Semrahtamali			83° 2' 11.726" E	27° 8' 31.756" N
330			Bisunpur Mustahkam			83° 0' 42.407" E	27° 8' 25.797" N

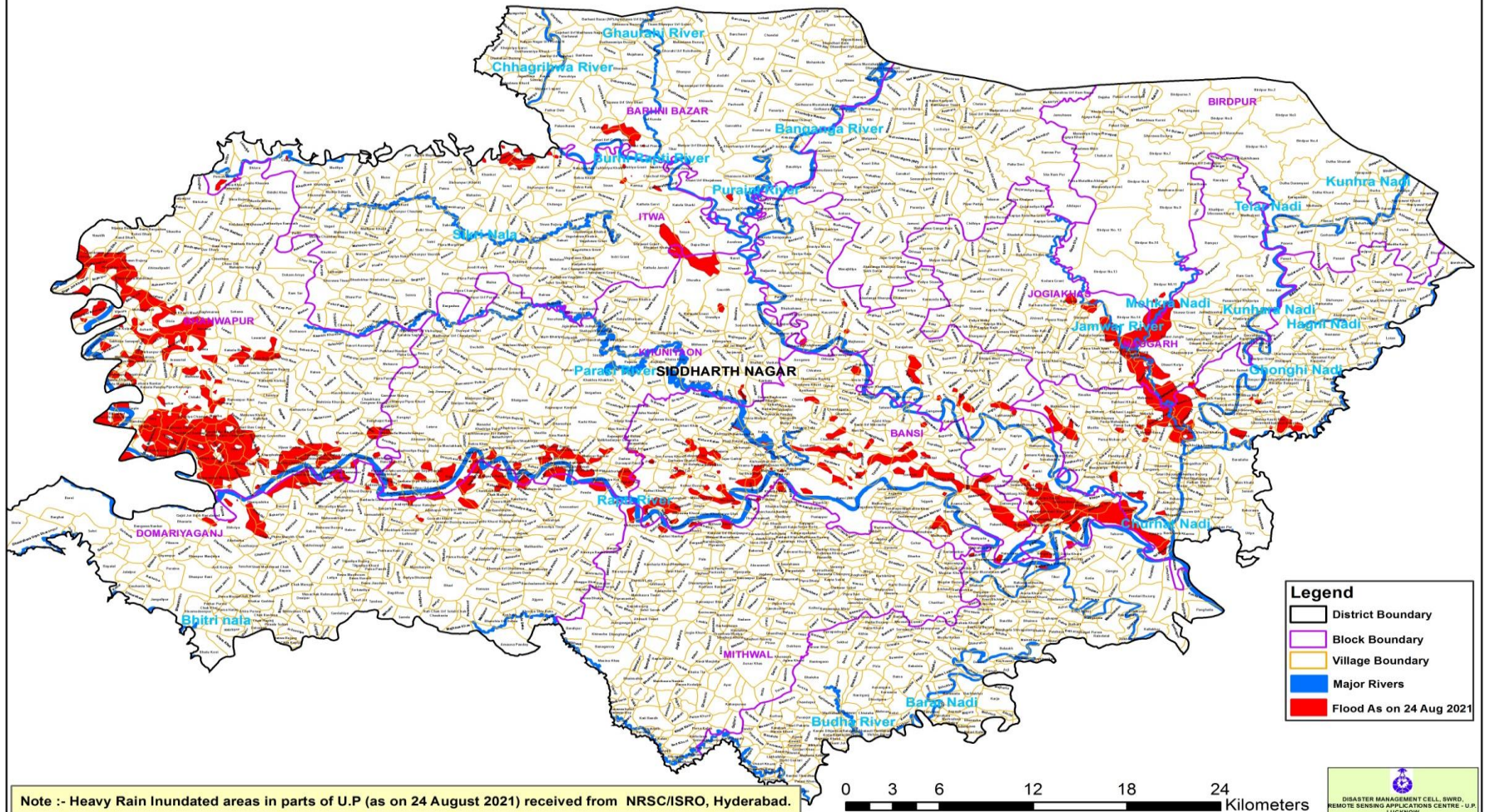
331		KHUNIYAON	Mainihwa				82° 50' 3.655" E	27° 20' 5.453" N
332			Dhowha				82° 50' 45.336" E	27° 19' 37.003" N
333			Gaurdih				82° 51' 41.895" E	27° 19' 15.137" N
334			Urwaliya				82° 51' 25.074" E	27° 18' 11.488" N
335			Madhwapur Kalan				82° 53' 55.618" E	27° 17' 34.565" N
336			Kolhui				82° 52' 14.535" E	27° 15' 47.772" N
337			Harrya				82° 51' 33.326" E	27° 15' 26.020" N
338			Mankari				82° 52' 23.666" E	27° 15' 9.705" N
339			Prempur				82° 40' 4.280" E	27° 13' 51.153" N
340			Acolhiya				82° 40' 8.762" E	27° 13' 24.342" N
341			Dhoorhra May Parsadi Khas				82° 41' 36.131" E	27° 13' 4.903" N
342			Dhourhara Ahtmali				82° 42' 31.383" E	27° 12' 43.301" N
343			Gosyamay Sirya Baghal				82° 41' 23.691" E	27° 12' 18.142" N
344			Katya Mustahcum				82° 40' 28.676" E	27° 12' 18.324" N
345			Rajpur				82° 42' 16.978" E	27° 12' 7.015" N
346			Katya Ahtmali				82° 40' 3.568" E	27° 12' 12.091" N
347			Jankata Urph Khajuraha				82° 40' 47.779" E	27° 11' 54.181" N
348			Balbanva				82° 40' 8.771" E	27° 11' 53.431" N
349			Moakkilpur Urf Gulhariya				82° 41' 26.896" E	27° 11' 38.805" N
350			Kaghw				82° 40' 15.309" E	27° 11' 26.345" N
351			Majhari May Kohal				82° 40' 54.221" E	27° 11' 25.354" N
352			Badhara Khas				82° 43' 9.896" E	27° 13' 1.456" N
353			Valibhadarpur Govaraha				82° 47' 46.554" E	27° 13' 29.268" N
354			Khurhur Bandi				82° 45' 54.986" E	27° 13' 14.151" N
355			Penda Nankar				82° 46' 26.227" E	27° 13' 6.107" N
356			Dev Bhariya				82° 45' 11.510" E	27° 13' 13.511" N
357			Rajwapur Misra				82° 43' 50.336" E	27° 13' 10.485" N
358			Mateser Nankar				82° 47' 21.848" E	27° 12' 52.640" N
359			Dadwa				82° 48' 17.623" E	27° 12' 45.956" N
360			Narayanpur				82° 47' 43.600" E	27° 12' 49.410" N
361			Dupheriya Misra				82° 45' 40.558" E	27° 12' 47.180" N
362			Shankerpur Shankerjot				82° 43' 37.052" E	27° 12' 53.121" N
363			Cherajot				82° 44' 52.131" E	27° 12' 41.630" N

364		Mahua Pathak Nankar			82° 46' 53.269" E	27° 12' 19.256" N
365		Duvaayal Panday			82° 48' 45.886" E	27° 12' 36.087" N
366		Mirzapur/Gaura Narottam			82° 44' 2.557" E	27° 12' 38.875" N
367		Ekdegwa Musthakham			82° 46' 12.034" E	27° 12' 37.182" N
368		Akbarpur			82° 43' 33.014" E	27° 12' 39.998" N
369		Mankhoriya Jeet			82° 47' 57.838" E	27° 12' 17.385" N
370		Palta			82° 45' 29.314" E	27° 12' 7.357" N
371		Palti			82° 45' 47.739" E	27° 12' 20.629" N
372		Gaura Panchgauti			82° 44' 39.732" E	27° 12' 20.287" N
373		Ekdegwa Ahhatmali			82° 46' 10.382" E	27° 12' 19.372" N
374		Bangawa			82° 48' 24.368" E	27° 12' 15.093" N
375		Gaura Bazar			82° 44' 54.276" E	27° 12' 4.241" N
376		Mankhoriya Kot			82° 47' 39.759" E	27° 11' 56.896" N
377		Tighari Rai			82° 48' 28.040" E	27° 11' 51.931" N
378		Tighra			82° 48' 11.976" E	27° 11' 29.385" N
379	MITHWAL	Bankata			82° 48' 32.539" E	27° 10' 44.257" N
380		Sehrighat			82° 49' 25.722" E	27° 10' 7.507" N
381		Kishunpurwa			82° 48' 44.859" E	27° 10' 13.086" N
382		Khadra			82° 51' 7.174" E	27° 10' 7.347" N
383		Khadri			82° 50' 42.607" E	27° 10' 0.243" N
384		Babhni Nankar			82° 49' 54.968" E	27° 9' 47.210" N
385		Rudlapur			82° 53' 41.766" E	27° 11' 51.297" N
386		Harria			82° 53' 59.916" E	27° 11' 28.470" N
387		Kharika Khas			82° 53' 42.586" E	27° 11' 36.251" N
388		Kharka Tadhwar			82° 53' 28.765" E	27° 11' 36.373" N
389		Kharika Panday			82° 52' 53.646" E	27° 11' 13.889" N
390		Mithwal Ahtmali			82° 51' 39.836" E	27° 10' 11.215" N
391		Kakuwa Urf Bhatijwapur			82° 52' 18.330" E	27° 9' 54.741" N
392	NAUGARH	Kodara Grant			83° 3' 17.114" E	27° 19' 35.573" N
393		Raje Dera			83° 3' 38.866" E	27° 18' 48.639" N
394		Sisawa Grant			83° 7' 42.377" E	27° 18' 29.356" N
395		Birdpur No.14			83° 5' 33.114" E	27° 18' 11.900" N
396		Basauni			83° 3' 25.024" E	27° 18' 32.986" N
397		Barago			83° 4' 37.023" E	27° 18' 16.271" N

398			Mahanag			83° 4' 4.055" E	27° 18' 16.577" N
399			Kesari			83° 3' 48.914" E	27° 18' 18.212" N
400			Semarnar			83° 4' 38.652" E	27° 17' 44.990" N
401			Patani Jungle			83° 7' 15.671" E	27° 17' 22.895" N
402			Bhimapar			83° 5' 0.438" E	27° 17' 17.859" N
403			Tetri Bazar (MB)			83° 5' 33.461" E	27° 16' 32.498" N
404			Dhauri Kuiya			83° 6' 57.373" E	27° 16' 22.359" N
405			Tetari Bazar			83° 5' 8.119" E	27° 16' 51.494" N
406			Pithani Buzurg			83° 5' 44.240" E	27° 16' 43.746" N
407			Jagadishpur Grant			83° 8' 5.822" E	27° 16' 17.958" N
408			Pithani Khurd			83° 5' 55.623" E	27° 16' 33.998" N
409			Romapar			83° 6' 8.762" E	27° 15' 54.518" N
410			Chilhedara Grant			83° 7' 12.367" E	27° 15' 19.234" N
411		USKA BAZAR	Dahala			83° 10' 35.436" E	27° 15' 22.388" N
412			Gulariha			83° 11' 31.882" E	27° 13' 48.376" N
413			Mhua Mafi			83° 9' 54.114" E	27° 15' 12.269" N
414			Mahanag			83° 10' 27.918" E	27° 14' 56.282" N
415			Parasauna			83° 11' 56.904" E	27° 14' 23.773" N
416			Khakhara Khurd			83° 11' 1.089" E	27° 14' 8.311" N
417			Mahua Kashi Ram			83° 10' 37.002" E	27° 14' 14.091" N
418			Sohas Daramiyani			83° 8' 35.557" E	27° 15' 39.962" N
419			Mahariya			83° 6' 18.697" E	27° 15' 9.173" N
420			Sohas Janubi			83° 7' 46.687" E	27° 15' 1.328" N
421			Sajani			83° 2' 36.187" E	27° 14' 50.028" N
422			Jhuganwa			83° 9' 40.498" E	27° 14' 49.453" N
423			Kolhua			83° 6' 16.210" E	27° 14' 45.525" N
424			Chanaraiya			83° 7' 46.556" E	27° 14' 24.510" N
425			Deolaha Grant			83° 6' 45.199" E	27° 14' 21.175" N
426			Nebuiya			83° 6' 24.044" E	27° 14' 30.170" N
427			Basawanpur			83° 8' 22.564" E	27° 14' 8.637" N
428			Parsa Mahapatra			83° 5' 12.912" E	27° 14' 11.168" N
429			Sihorawa			83° 3' 11.603" E	27° 14' 9.121" N
430			Chaurasi			83° 3' 48.206" E	27° 14' 10.337" N
431			Parsa Sukaru Llah			83° 5' 44.391" E	27° 14' 9.101" N

432			Kanajahwa				83° 7' 22.813" E	27° 14' 3.971" N
433			Kathaha				83° 9' 41.816" E	27° 13' 42.567" N
434			Khutawa				83° 6' 54.419" E	27° 13' 44.140" N
435			Bhaluha				83° 7' 50.151" E	27° 13' 43.473" N
436			Kataki				83° 6' 2.682" E	27° 13' 47.681" N
437			Kara Chhuliya Khalasa				83° 8' 15.132" E	27° 13' 46.607" N
438			Madar Hana				83° 6' 26.650" E	27° 13' 43.582" N
439			Bangawa				83° 7' 19.077" E	27° 13' 36.284" N
440			Pipara				83° 5' 32.472" E	27° 13' 39.226" N
441			Fulawariya				83° 7' 37.169" E	27° 13' 12.452" N
442			Karachhuliya Grant				83° 8' 3.002" E	27° 13' 16.797" N
443			Katka				83° 6' 12.378" E	27° 13' 20.391" N
444			Chokhar				83° 3' 31.503" E	27° 13' 34.912" N
445			Chorai				83° 3' 57.981" E	27° 13' 23.550" N
446			Muharaiya				83° 5' 11.211" E	27° 11' 51.963" N
447			Hathiwari Tal				83° 5' 59.664" E	27° 11' 22.410" N
448			Laukhai				83° 5' 42.218" E	27° 10' 47.205" N
449			Ajagara				83° 6' 29.176" E	27° 10' 4.746" N
450			Sekhuiya				83° 6' 48.597" E	27° 10' 49.190" N
451			Tal Bagahiya				83° 6' 52.925" E	27° 9' 18.857" N

MAP FOR FLOOD AFFECTED AND WATERLOGGED AREAS ALONG RRAPTI, OLD RAPTI, AND JAMWAR RIVERS IN PARTS OF SIDDHARTH NAGAR DISTRICT, U.P.
 (FLOOD AFFECTED AREA 12855 ha. AS ON 24 AUGUST 2021)



Legend

- District Boundary
- Block Boundary
- Village Boundary
- Major Rivers
- Flood As on 24 Aug 2021

Note :- Heavy Rain Inundated areas in parts of U.P (as on 24 August 2021) received from NRSC/ISRO, Hyderabad.

