

List of flood affected near by villages in Maharajganj District (U.P.) as on 24th Aug. 2021

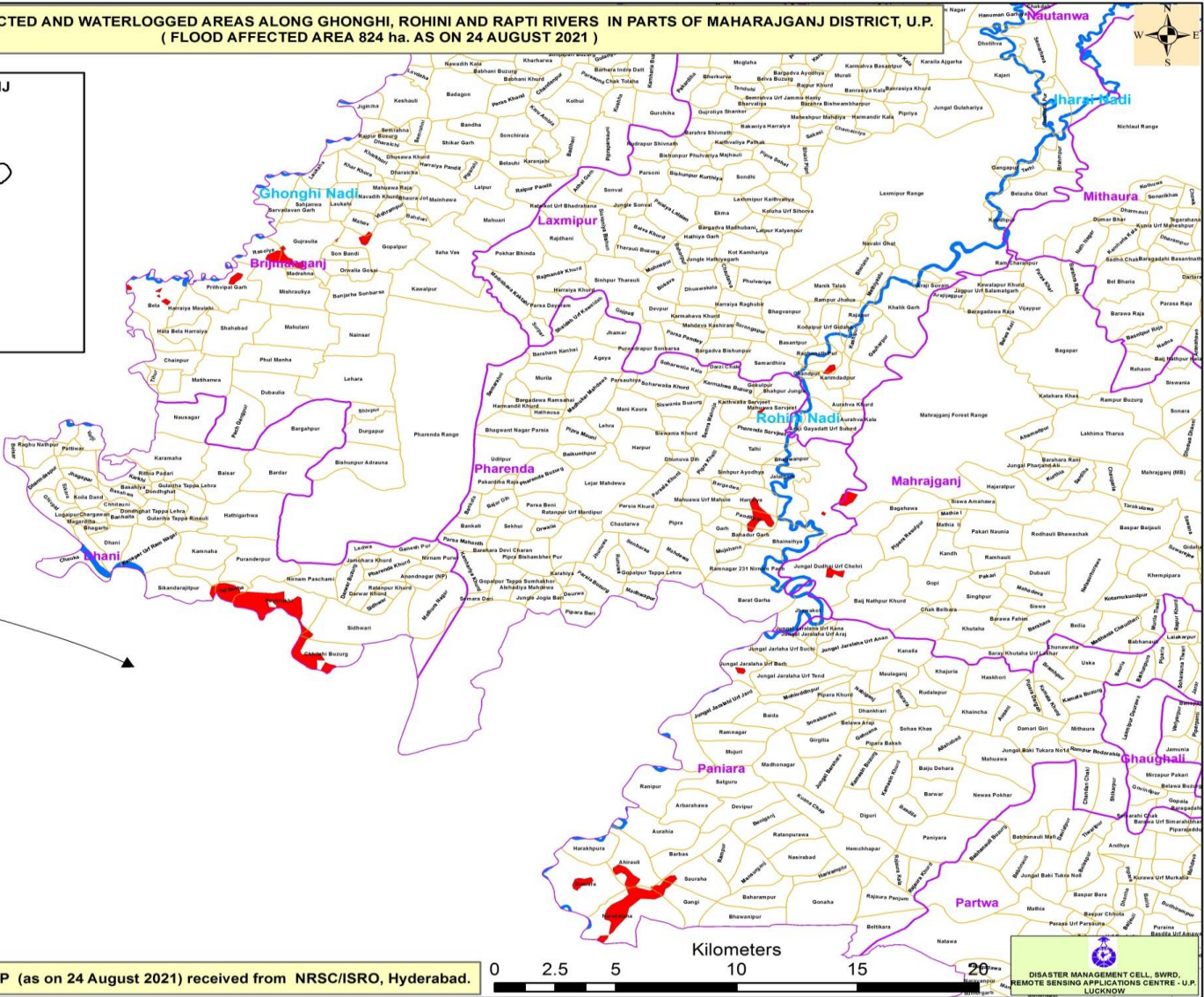
Flood affected blocks=6

Flood affected villages=29

Flood affected area= 824 ha.

S.N.	DISTRICT	BLOCK	VILLAGE	BLOCK	VILLAGE	AFFECTED AREA (in Ha.)	LONGITUDE	LATITUDE
1	MAHRAJGANJ	Brijmanganj	Gujraulia	6	29	824	83° 14' 1.953" E	27° 14' 28.709" N
2			Rasoia				83° 13' 2.296" E	27° 14' 13.330" N
3			Madrahna				83° 13' 56.352" E	27° 13' 40.937" N
4			Mahav				83° 15' 16.744" E	27° 14' 57.326" N
5			Gopalpur				83° 15' 49.894" E	27° 14' 23.268" N
6			Prithvipal Garh				83° 12' 21.506" E	27° 13' 20.634" N
7			Bela				83° 10' 47.283" E	27° 12' 53.546" N
8		Dhani	Sidhwari				83° 15' 18.027" E	27° 5' 3.120" N
9			Chhitahi Buzurg				83° 14' 29.849" E	27° 4' 15.376" N
10			Nagawa				83° 11' 39.587" E	27° 6' 16.476" N
11			Sikandarajitpur				83° 11' 12.168" E	27° 5' 55.556" N
12			Pachrukhi				83° 13' 29.914" E	27° 5' 34.689" N
13			Tal Berha				83° 12' 22.018" E	27° 5' 50.617" N
14			Chauka				83° 8' 57.845" E	27° 6' 37.074" N
15		Laxmipur	Bhagvanpur				83° 25' 41.025" E	27° 11' 26.574" N
16			Karimdadpur				83° 25' 55.534" E	27° 11' 10.228" N
17		Mahrajganj	Mahrajganj Forest Range				83° 28' 14.742" E	27° 10' 10.445" N
18			Jungal Dudhai Urf Chehri				83° 25' 50.206" E	27° 6' 26.069" N
19		Paniara	Jungal Jaralaha Urf Barh				83° 23' 47.680" E	27° 4' 1.037" N
20			Ahirauli				83° 21' 19.663" E	26° 59' 6.054" N
21			Domara				83° 20' 12.404" E	26° 58' 33.644" N
22			Sauraha				83° 22' 51.588" E	26° 58' 41.365" N
23			Gangi				83° 22' 31.108" E	26° 58' 6.993" N
24			Narakataha				83° 21' 17.503" E	26° 57' 46.353" N
25		Pharenda	Mahuawa Sarvjeet				83° 24' 27.310" E	27° 10' 16.544" N
26			Pharenda Range				83° 25' 42.462" E	27° 8' 22.683" N
27			Harraiya				83° 24' 1.918" E	27° 8' 4.722" N
28			Panditpur				83° 23' 58.337" E	27° 7' 37.877" N
29			Bahadur Garh				83° 23' 59.257" E	27° 7' 13.620" N

MAP FOR FLOOD AFFECTED AND WATERLOGGED AREAS ALONG GHONGHI, ROHINI AND RAPTI RIVERS IN PARTS OF MAHARAJGANJ DISTRICT, U.P. (FLOOD AFFECTED AREA 824 ha. AS ON 24 AUGUST 2021)



Legend

- District Boundary
- Block Boundary
- Village Boundary
- Major Rivers
- Flood As on 24 Aug 2021

Note :- Heavy Rain Inundated areas in parts of U.P (as on 24 August 2021) received from NRSC/ISRO, Hyderabad.