

List of flood affected near by villages in Basti District (U.P.) as on 24th Aug. 2021

Flood affected blocks=4

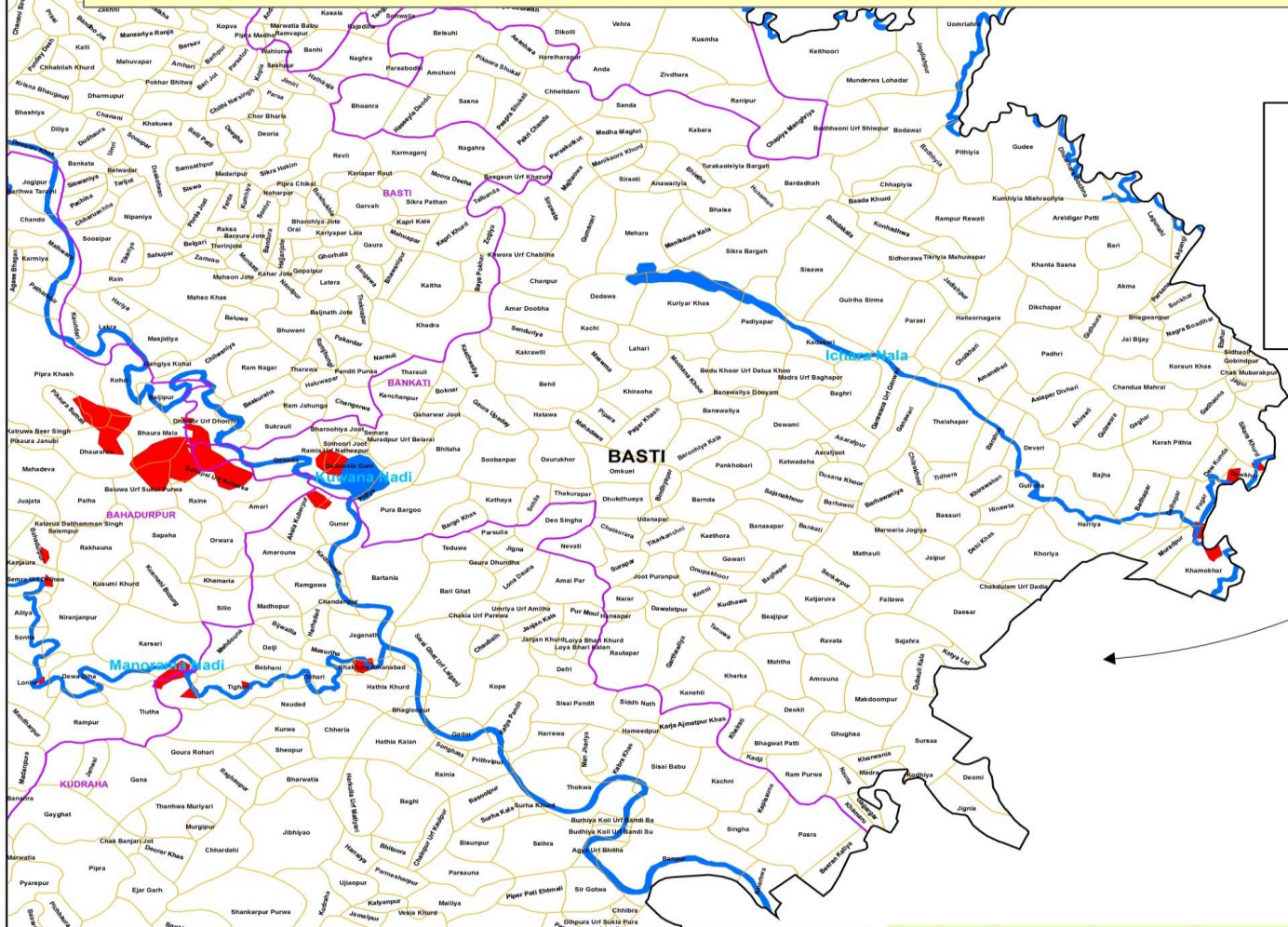
Flood affected villages=34

Flood affected area= 325 ha.

S.N.	DISTRICT	BLOCK	VILLAGE	BLOCK	VILLAGE	AFFECTED AREA (in Ha.)	LONGITUDE	LATITUDE
1	BASTI	BAHADURPUR	Pipra Khash	4	34	325	82° 45' 23.646" E	26° 42' 47.346" N
2			Kohal				82° 46' 19.271" E	26° 42' 40.233" N
3			Baijipur				82° 46' 47.893" E	26° 42' 28.787" N
4			Pikaura Sumali				82° 45' 42.917" E	26° 42' 21.486" N
5			Bhaura Mala				82° 46' 36.784" E	26° 42' 1.700" N
6			Dhaurahra				82° 46' 2.099" E	26° 41' 49.964" N
7			Sahupal Urf Koharsa				82° 47' 19.608" E	26° 41' 31.605" N
8			Baluwa Urf Sukul Purwa				82° 46' 33.426" E	26° 41' 23.332" N
9			Raine				82° 47' 5.833" E	26° 41' 14.980" N
10			Bahadurpur				82° 45' 23.437" E	26° 40' 44.134" N
11			Semra Urf Delhwa				82° 45' 18.743" E	26° 40' 19.054" N
12			Karsari				82° 46' 36.861" E	26° 39' 34.197" N
13			Lonha				82° 45' 12.062" E	26° 39' 8.067" N
14			Dewa Diha				82° 45' 59.349" E	26° 39' 8.557" N
15			Tiutha				82° 46' 30.225" E	26° 38' 44.980" N
16		BANKATI	Dew Kunda				82° 57' 59.125" E	26° 41' 42.668" N
17			Bharoohiya Joot				82° 48' 35.357" E	26° 42' 6.026" N
18			Gawada				82° 47' 52.720" E	26° 41' 46.973" N
19			Ramla Urf Natheepur				82° 48' 35.175" E	26° 41' 50.887" N
20			Dadawala Guni				82° 48' 43.637" E	26° 41' 32.991" N
21			Pidiya				82° 49' 12.154" E	26° 41' 30.520" N
22			Sikara Khurd				82° 58' 20.331" E	26° 42' 1.645" N
23			Dewkhar				82° 58' 16.957" E	26° 41' 33.052" N
24			Pagar				82° 57' 50.549" E	26° 41' 13.588" N
25			Muradpur				82° 57' 27.785" E	26° 40' 37.452" N
26			Khamokhar				82° 57' 51.619" E	26° 40' 25.572" N
27		BASTI	Dhanjor Urf Dhorrhri				82° 47' 14.889" E	26° 42' 11.732" N
28		KUDRAHA	Akela Kuberpur				82° 48' 13.578" E	26° 41' 1.142" N
29			Gunar				82° 48' 38.558" E	26° 40' 58.744" N

30			Jaganath				82° 48' 51.755" E	26° 39' 39.448" N
31			Khakhara Amanabad				82° 48' 59.566" E	26° 39' 16.699" N
32			Titihari				82° 48' 24.953" E	26° 39' 8.181" N
33			Tighari				82° 47' 30.393" E	26° 39' 2.748" N
34			Tiutha				82° 46' 54.682" E	26° 38' 59.465" N

**MAP FOR FLOOD AFFECTED AND WATERLOGGED AREAS ALONG KUWANA, AMI AND MANORAMA RIVERS IN PARTS OF BASTI DISTRICT, U.P.
(FLOOD AFFECTED AREA 325 ha. AS ON 24 AUGUST 2021)**



Legend

- District Boundary
- Block Boundary
- Village Boundary
- Major Rivers
- Flood As on 24 Aug 2021

Note :- Heavy Rain Inundated areas in parts of U.P. (as on 24 August 2021) received from NRSC/ISRO, Hyderabad.

