

List of flood affected near by villages in Basti District (U.P.) as on 21st Aug. 2021

Flood affected blocks=08

Flood affected villages=165

Flood affected area=1684 ha.

S.N.	DISTRICT	BLOCK	VILLAGE	BLOCK	VILLAGE	AFFECTED AREA (in Ha.)	LONGITUDE	LATITUDE
1	BASTI	BAHADURPUR	Kakraee	8	165	1684	82°43' 59.283" E	26°45' 20.233" N
2			Jogipur				82°45' 20.066" E	26°45' 2.760" N
3			Pipra Khash				82°45' 23.646" E	26°42' 47.346" N
4			Kohal				82°46' 19.271" E	26°42' 40.233" N
5			Baijipur				82°46' 47.893" E	26°42' 28.787" N
6			Pratappur				82°43' 29.212" E	26°42' 12.946" N
7			Pikaura Sumali				82°45' 42.917" E	26°42' 21.486" N
8			Bhaura Mala				82°46' 36.784" E	26°42' 1.700" N
9			Bhuresar				82°43' 0.532" E	26°42' 9.777" N
10			Dhaurahra				82°46' 2.099" E	26°41' 49.964" N
11			Sahupal Urf Koharsa				82°47' 19.608" E	26°41' 31.605" N
12			Narayanpur				82°44' 6.759" E	26°41' 48.190" N
13			Siswari Raghubeer Singh				82°42' 58.219" E	26°41' 41.614" N
14			Siswari Badan Singh Khas				82°43' 26.659" E	26°41' 27.342" N
15			Rojhia				82°44' 38.709" E	26°41' 17.082" N
16			Baluwa Urf Sukul Purwa				82°46' 33.426" E	26°41' 23.332" N
17			Hathia				82°44' 4.537" E	26°41' 14.347" N
18			Raine				82°47' 5.833" E	26°41' 14.980" N
19			Rakhauna				82°46' 2.300" E	26°40' 41.864" N
20			Katarua Dalthamman Singh				82°44' 59.071" E	26°40' 55.951" N
21			Matera				82°43' 18.729" E	26°40' 57.423" N
22			Bahadurpur				82°45' 23.437" E	26°40' 44.134" N
23			Akolha				82°42' 58.588" E	26°40' 41.960" N
24			Semra Chigan				82°43' 33.444" E	26°40' 31.069" N
25			Pirawal				82°44' 12.167" E	26°40' 40.817" N
26			Sondhia				82°44' 34.878" E	26°40' 28.569" N
27			Kanjaura				82°44' 56.146" E	26°40' 26.421" N
28			Semra Urf Delhwa				82°45' 18.743" E	26°40' 19.054" N

29			Niranjanpur			82°45' 47.775" E	26°39' 52.221" N
30			Merwa			82°44' 31.211" E	26°40' 6.045" N
31			Ailiya			82°45' 6.271" E	26°39' 57.132" N
32			Kathwaliya			82°44' 6.770" E	26°39' 54.866" N
33			Dofara			82°44' 19.502" E	26°39' 23.765" N
34			Sonha			82°45' 14.206" E	26°39' 34.114" N
35			Lonha			82°45' 12.062" E	26°39' 8.067" N
36			Dewa Diha			82°45' 59.349" E	26°39' 8.557" N
37			Tiutha			82°46' 30.225" E	26°38' 44.980" N
38			Rampur			82°45' 51.264" E	26°38' 37.405" N
39			Pilai			82°42' 33.142" E	26°41' 5.551" N
40			Itaili			82°42' 25.756" E	26°40' 26.638" N
41			Ramwapur			82°41' 41.477" E	26°40' 4.919" N
42			Kachoor			82°42' 9.560" E	26°40' 2.036" N
43			Mohammadpur			82°42' 23.637" E	26°39' 49.628" N
44			Jagdishpur			82°41' 50.856" E	26°39' 46.803" N
45		BANKATI	Bharoohiya Joot			82°48' 35.357" E	26°42' 6.026" N
46			Gawada			82°47' 52.720" E	26°41' 46.973" N
47			Ramla Urf Natheepur			82°48' 35.175" E	26°41' 50.887" N
48			Sinhoori Joot			82°48' 49.141" E	26°41' 53.859" N
49			Dadawala Guni			82°48' 43.637" E	26°41' 32.991" N
50			Pidiya			82°49' 12.154" E	26°41' 30.520" N
51			Pura Bargoo			82°49' 23.541" E	26°41' 8.599" N
52		BASTI	Shripalpur			82°43' 30.847" E	26°50' 33.291" N
53			Chandokha			82°42' 37.312" E	26°50' 50.345" N
54			Katra Khurd			82°38' 31.380" E	26°48' 44.710" N
55			Badhara			82°39' 2.768" E	26°48' 41.743" N
56			Mahuaar			82°38' 38.312" E	26°48' 17.156" N
57			Chiter Gadiya			82°38' 58.124" E	26°47' 43.082" N
58			Charoha Sirapar			82°42' 55.614" E	26°49' 10.987" N
59			Bandhuwa			82°41' 28.550" E	26°48' 59.463" N
60			Ganeshpur			82°40' 29.808" E	26°48' 0.550" N
61			Dhorika			82°42' 27.257" E	26°48' 37.400" N
62			Bargadwa			82°43' 16.736" E	26°48' 37.353" N

63			Habeli Khas			82°43' 5.953" E	26°48' 9.473" N
64			Aaspur			82°41' 54.529" E	26°47' 37.899" N
65			Mer			82°42' 17.607" E	26°47' 35.596" N
66			Barana			82°42' 20.152" E	26°47' 27.756" N
67			Barban			82°42' 29.902" E	26°47' 19.293" N
68			Nauachh			82°42' 25.497" E	26°47' 4.732" N
69			Dubkhara			82°41' 10.768" E	26°46' 23.837" N
70			Rithiya			82°41' 34.235" E	26°46' 29.094" N
71			Bashwa			82°40' 24.429" E	26°46' 34.326" N
72			Sansarpur			82°42' 0.281" E	26°46' 33.328" N
73			Amhut			82°42' 49.270" E	26°46' 34.138" N
74			Ghodora Rehar Urf Gaya Gh			82°43' 27.848" E	26°49' 44.371" N
75			Bankashi			82°42' 54.446" E	26°50' 10.025" N
76			Basti (MB)			82°44' 34.528" E	26°47' 52.553" N
77			Khaurhwa			82°43' 31.184" E	26°46' 24.062" N
78			Sarai			82°43' 40.983" E	26°45' 55.520" N
79			Tongipara			82°44' 37.480" E	26°45' 47.175" N
80			Bhashiya			82°45' 10.177" E	26°45' 50.333" N
81			Niviya			82°44' 55.907" E	26°45' 30.771" N
82			Raja Chak			82°44' 25.852" E	26°45' 26.060" N
83			Devarav Khas			82°45' 20.573" E	26°45' 26.747" N
84			Bhadeswar Nath			82°44' 45.432" E	26°45' 15.791" N
85			Lakra			82°46' 2.710" E	26°43' 18.933" N
86			Kauridari			82°45' 46.251" E	26°43' 19.610" N
87			Chilwaniya			82°47' 19.841" E	26°42' 55.392" N
88			Ram Nagar			82°47' 45.390" E	26°42' 49.880" N
89			Gangiya Kohal			82°46' 46.921" E	26°42' 52.481" N
90			Baakuraha			82°47' 44.001" E	26°42' 25.459" N
91			Dhanjor Urf Dhorrhri			82°47' 14.889" E	26°42' 11.732" N
92			Sukrauli			82°47' 56.196" E	26°42' 8.105" N
93		GAUR	Uniyar			82°36' 45.491" E	26°55' 39.475" N
94			Kanchanpur			82°36' 53.293" E	26°58' 53.327" N
95			Mansoor Nagar			82°36' 46.553" E	26°56' 2.106" N
96			Shiwa			82°37' 29.761" E	26°55' 16.816" N

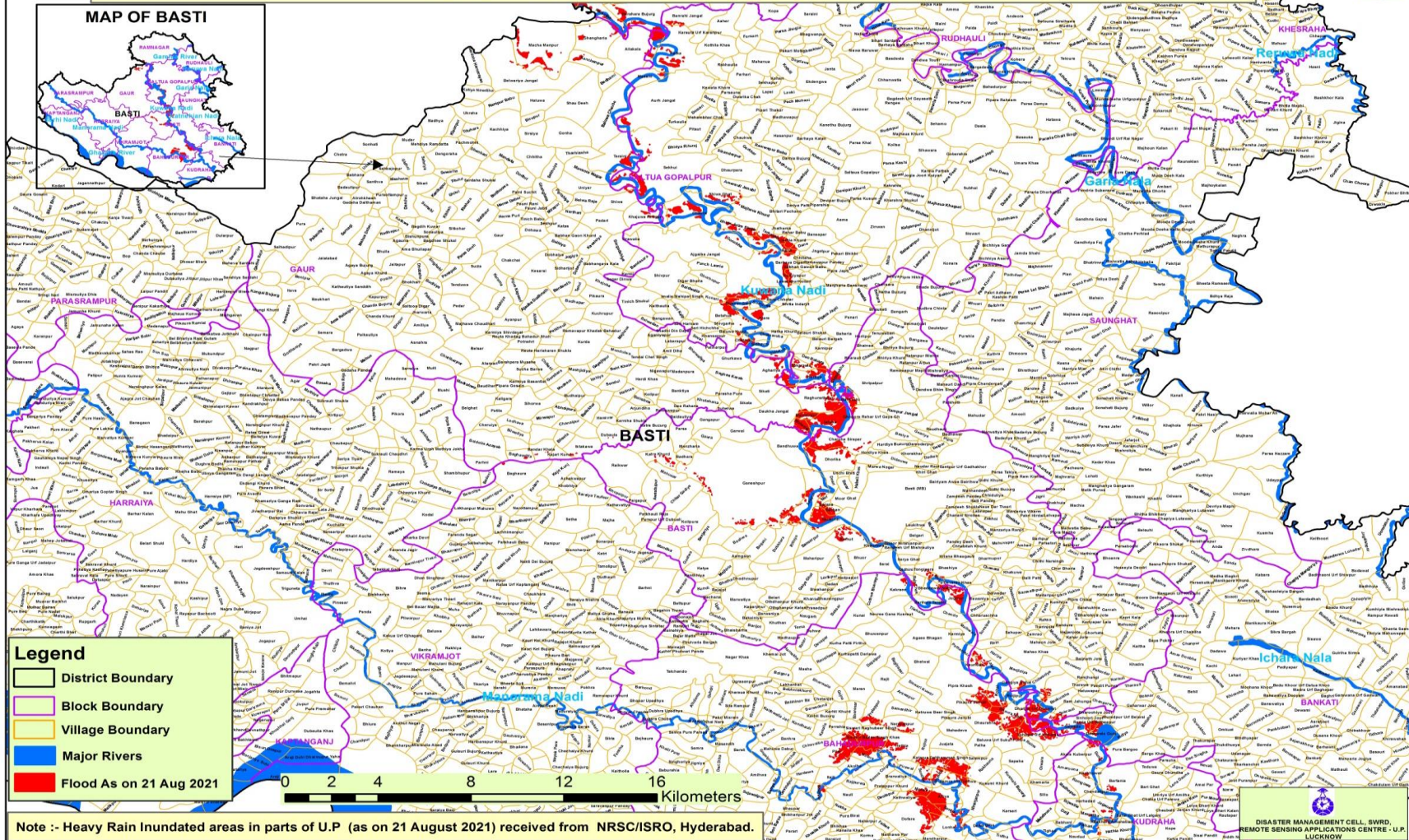
97			Macha Manpur			82°35' 46.073" E	26°59' 19.648" N
98			Ghangharia			82°36' 59.523" E	26°59' 29.242" N
99			Ailakala			82°37' 53.045" E	26°59' 12.292" N
100			Belwariya Jangal			82°35' 21.332" E	26°58' 38.730" N
101			Taraini			82°37' 27.643" E	26°56' 26.655" N
102			Khajuwa Khapar			82°38' 7.202" E	26°54' 52.606" N
103			Aghariya			82°41' 7.242" E	26°50' 55.185" N
104			Raghunathpur			82°42' 9.540" E	26°50' 13.294" N
105			Baghaudha			82°35' 14.565" E	26°48' 43.425" N
106			Dubaula			82°37' 26.602" E	26°49' 15.497" N
107			Iktakawa			82°36' 40.687" E	26°48' 57.302" N
108			Bandar Khala			82°35' 44.966" E	26°48' 52.715" N
109			Kajari Kund			82°36' 9.075" E	26°48' 45.194" N
110			Daukha Jangal			82°41' 7.422" E	26°49' 51.819" N
111			Jataha			82°42' 29.222" E	26°49' 35.583" N
112			Mainsirpur			82°41' 52.563" E	26°49' 45.637" N
113			Mahadal			82°41' 46.656" E	26°49' 27.460" N
114		KUDRAHA	Akela Kuberpur			82°48' 13.578" E	26°41' 1.142" N
115			Gunar			82°48' 38.558" E	26°40' 58.744" N
116			Bartania			82°49' 7.418" E	26°40' 20.265" N
117			Kachhuwar			82°48' 31.819" E	26°40' 32.238" N
118			Ramgowa			82°48' 16.667" E	26°40' 15.241" N
119			Jaganath			82°48' 51.755" E	26°39' 39.448" N
120			Masuriha			82°48' 28.631" E	26°39' 27.265" N
121			Khakhara Amanabad			82°48' 59.566" E	26°39' 16.699" N
122			Hathia Khurd			82°49' 8.198" E	26°39' 2.635" N
123			Titihari			82°48' 24.953" E	26°39' 8.181" N
124		RAMNAGAR	Arwa Ghat			82°34' 14.078" E	27°2' 43.400" N
125			Turkaulia Urf Karmahia			82°36' 14.843" E	27°0' 56.415" N
126			Tendua Asnahara			82°35' 6.525" E	27°1' 21.005" N
127			Parsa Khurd			82°36' 44.437" E	27°0' 54.920" N
128			Narkatha			82°37' 5.726" E	27°0' 4.990" N
129			Dhawai			82°37' 59.534" E	27°0' 47.639" N
130			Barahara Bujurg			82°38' 2.028" E	27°0' 6.397" N

131		SALTUA GOPALPUR	Banrahi Jangal			82°39' 10.473" E	27°0' 4.159" N
132			Shiwa Ghat			82°39' 43.425" E	26°55' 32.115" N
133			Amarauli Janubi			82°40' 20.220" E	26°55' 39.220" N
134			Majhava Khurd			82°40' 39.140" E	26°55' 1.339" N
135			Bhiria Jalim Singh			82°40' 17.405" E	26°54' 38.601" N
136			Tarhauha			82°41' 1.792" E	26°54' 24.853" N
137			Gonchha			82°40' 11.261" E	26°54' 12.398" N
138			Darhia Khurd			82°41' 29.967" E	26°54' 15.047" N
139			Mahadeva			82°40' 46.383" E	26°54' 10.679" N
140			Dano			82°41' 47.657" E	26°54' 8.943" N
141			Balui			82°41' 25.434" E	26°54' 1.914" N
142			Korhiyapur			82°41' 35.650" E	26°53' 22.158" N
143			Bhadana			82°40' 51.825" E	26°52' 58.575" N
144			Chaura			82°39' 15.168" E	26°54' 58.698" N
145			Katka			82°38' 55.188" E	26°59' 5.739" N
146			Masahi			82°38' 6.502" E	26°58' 29.589" N
147			Aurh Jangal			82°38' 33.751" E	26°57' 52.985" N
148			Sekhui			82°38' 28.486" E	26°56' 9.037" N
149			Ajgaiba Jangal			82°39' 52.049" E	26°53' 48.793" N
150			Chetara			82°40' 23.060" E	26°51' 41.587" N
151			Harriya			82°42' 0.801" E	26°50' 45.244" N
152			Lawarapur			82°41' 36.122" E	26°53' 0.914" N
153			Konari			82°39' 42.390" E	26°52' 47.480" N
154			Bhawar Gara			82°40' 18.308" E	26°52' 39.297" N
155			Betahua			82°40' 9.174" E	26°52' 15.600" N
156			Suarihwa			82°40' 48.926" E	26°52' 36.967" N
157			Atara			82°40' 51.124" E	26°52' 16.014" N
158			Baluwa Kund			82°40' 10.612" E	26°51' 53.148" N
159			Chamaruha			82°41' 0.882" E	26°51' 46.220" N
160			Sidhavni			82°40' 48.042" E	26°51' 34.590" N
161			Sakaraula			82°41' 45.205" E	26°51' 3.599" N
162			Sidhauni			82°41' 11.513" E	26°51' 27.604" N
163			Deo Rahara			82°42' 3.788" E	26°51' 11.302" N
164		VIKRAMJOT	Kajri Kunj			82°36' 9.403" E	26°48' 19.659" N

MAP FOR FLOOD AFFECTED AND WATERLOGGED AREAS ALONG KUWANA, AND MANORAMA RIVERS IN PARTS OF BASTI DISTRICT, U.P.
(FLOOD AFFECTED AREA 1684 ha. AS ON 21 AUGUST 2021)

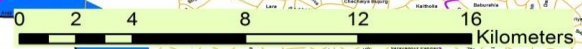


MAP OF BASTI



Legend

- District Boundary
- Block Boundary
- Village Boundary
- Major Rivers
- Flood As on 21 Aug 2021



Note :- Heavy Rain Inundated areas in parts of U.P (as on 21 August 2021) received from NRSC/ISRO, Hyderabad.

