

**List of flood affected near by villages in Maharajganj District (U.P.) as on 17th Aug. 2021**

**Flood affected blocks=6**

**Flood affected villages=73**

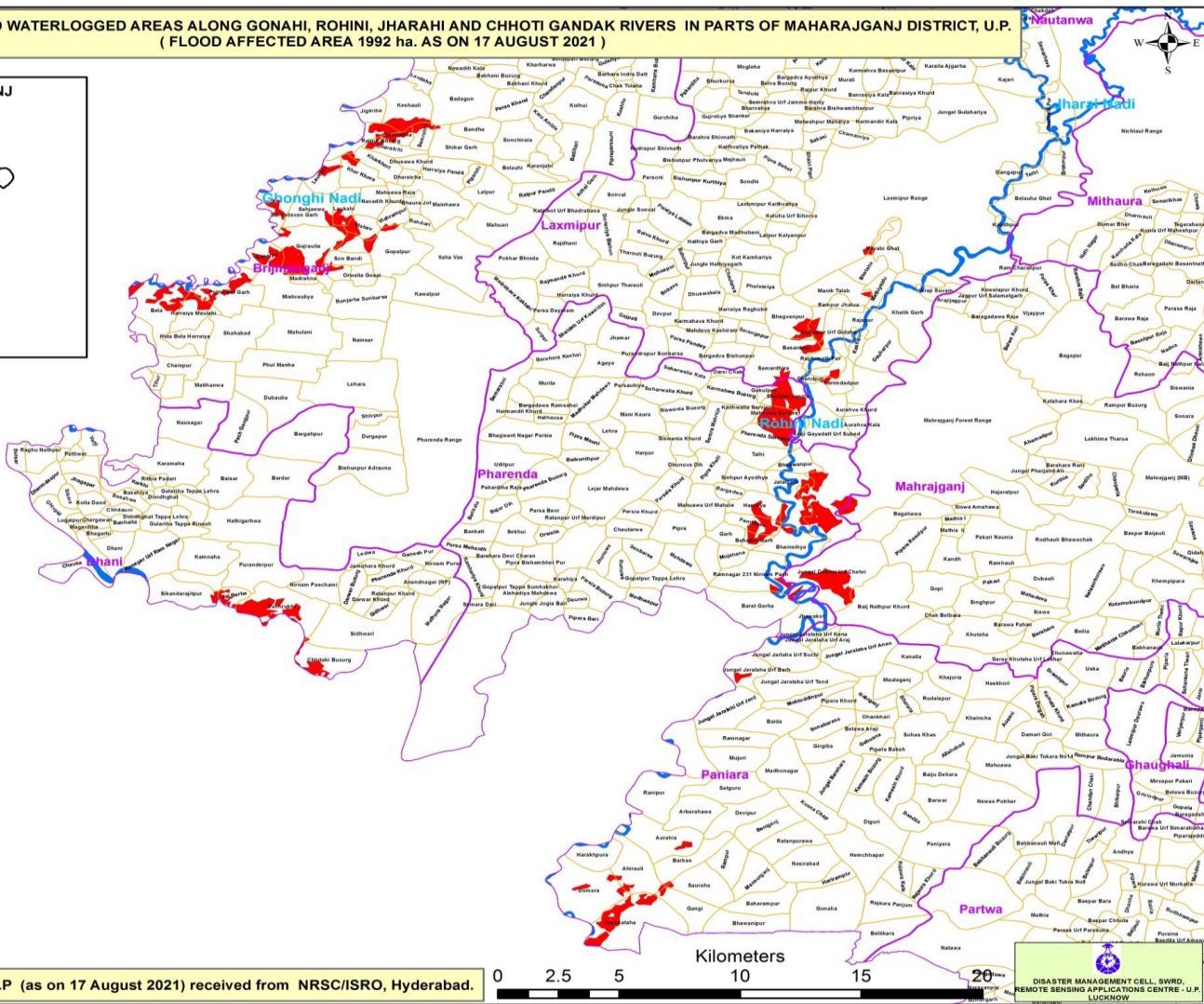
**Flood affected area=1992 ha.**

S.N.	DISTRICT	BLOCK	VILLAGE	BLOCK	VILLAGE	AFFECTED AREA ( in Ha.)	LONGITUDE	LATITUDE
1	<b>MAHRAJGANJ</b>	<b>Brijmanganj</b>	Keshauli	6	73	1992	83° 16' 13.085" E	27° 17' 57.811" N
2			Dharaichi				83° 15' 53.972" E	27° 16' 53.847" N
3			Kharkhori				83° 15' 37.704" E	27° 16' 30.668" N
4			Gujraulia				83° 14' 1.953" E	27° 14' 28.709" N
5			Rasoiya				83° 13' 2.296" E	27° 14' 13.330" N
6			Son Bandi				83° 14' 55.099" E	27° 14' 10.563" N
7			Achal Garh				83° 14' 41.785" E	27° 13' 50.894" N
8			Basdila				83° 14' 23.237" E	27° 13' 40.954" N
9			Madrahna				83° 13' 56.352" E	27° 13' 40.937" N
10			Badagon				83° 17' 25.254" E	27° 18' 7.141" N
11			Semrahni				83° 16' 35.328" E	27° 17' 12.469" N
12			Rajpur Buzurg				83° 15' 12.068" E	27° 17' 6.262" N
13			Shikar Garh				83° 17' 24.949" E	27° 16' 55.813" N
14			Semrahna				83° 16' 7.175" E	27° 17' 10.377" N
15			Laukaha				83° 14' 26.358" E	27° 16' 10.468" N
16			Khar Khora				83° 15' 9.066" E	27° 16' 15.623" N
17			Laukahi				83° 14' 51.335" E	27° 15' 30.459" N
18			Vishrampur				83° 15' 56.734" E	27° 15' 14.818" N
19			Mahav				83° 15' 16.744" E	27° 14' 57.326" N
20			Gopalpur				83° 15' 49.894" E	27° 14' 23.268" N
21			Sarvadavan Garh				83° 13' 23.747" E	27° 15' 38.899" N
22			Sahjanwa				83° 14' 5.371" E	27° 15' 23.753" N
23			Prithvipal Garh				83° 12' 21.506" E	27° 13' 20.634" N
24			Mishrauliya				83° 13' 40.540" E	27° 13' 18.332" N
25			Bela				83° 10' 47.283" E	27° 12' 53.546" N
26			Harraiya Maulahi				83° 11' 28.077" E	27° 12' 49.614" N
27		<b>Dhani</b>	Sidhwari				83° 15' 18.027" E	27° 5' 3.120" N
28			Chhitahi Buzurg				83° 14' 29.849" E	27° 4' 15.376" N

29			Nagawa			83° 11' 39.587" E	27° 6' 16.476" N
30			Sikandarajitpur			83° 11' 12.168" E	27° 5' 55.556" N
31			Pachrukhi			83° 13' 29.914" E	27° 5' 34.689" N
32			Tal Berha			83° 12' 22.018" E	27° 5' 50.617" N
33		<b>Laxmipur</b>	Laxmipur Range			83° 27' 42.012" E	27° 15' 40.179" N
34			Bhotaha			83° 26' 32.132" E	27° 14' 4.744" N
35			Navabi Ghat			83° 26' 59.723" E	27° 14' 25.538" N
36			Mathiyaidu			83° 26' 46.503" E	27° 13' 27.013" N
37			Manik Talab			83° 25' 45.147" E	27° 13' 22.849" N
38			Rampur Jhalua			83° 25' 39.659" E	27° 12' 48.722" N
39			Bhagvanpur			83° 24' 44.987" E	27° 12' 42.742" N
40			Kodaipur Urf Gidaha			83° 25' 45.846" E	27° 12' 21.506" N
41			Basantpur			83° 24' 51.958" E	27° 11' 58.489" N
42			Samardhira			83° 24' 20.834" E	27° 11' 27.968" N
43			Raghunath Pur			83° 25' 27.670" E	27° 11' 41.447" N
44			Bhagvanpur			83° 25' 41.025" E	27° 11' 26.574" N
45			Karimdadpur			83° 25' 55.534" E	27° 11' 10.228" N
46			Devipur			83° 25' 35.792" E	27° 10' 44.800" N
47			Devipur Kala			83° 24' 59.730" E	27° 10' 2.107" N
48		<b>Mahrajanj</b>	Mahrajanj Forest Range			83° 28' 14.742" E	27° 10' 10.445" N
49			Jungal Dudhai Urf Chehri			83° 25' 50.206" E	27° 6' 26.069" N
50			Baij Nathpur Khurd			83° 26' 53.012" E	27° 5' 40.238" N
51		<b>Paniara</b>	Jungal Jaralaha Urf Barh			83° 23' 47.680" E	27° 4' 1.037" N
52			Ranipur			83° 21' 53.197" E	27° 0' 58.606" N
53			Aurahia			83° 21' 53.589" E	26° 59' 51.936" N
54			Barbas			83° 22' 32.108" E	26° 59' 20.924" N
55			Ahirauli			83° 21' 19.663" E	26° 59' 6.054" N
56			Harakhpura			83° 20' 26.612" E	26° 59' 26.615" N
57			Domara			83° 20' 12.404" E	26° 58' 33.644" N
58			Sauraha			83° 22' 51.588" E	26° 58' 41.365" N
59			Gangi			83° 22' 31.108" E	26° 58' 6.993" N
60			Narakataha			83° 21' 17.503" E	26° 57' 46.353" N
61		<b>Pharenda</b>	Shahpur Jungle			83° 24' 45.335" E	27° 10' 46.507" N
62			Gokulpur			83° 24' 11.568" E	27° 10' 51.991" N

63			Mahuawa Sarvjeet				83° 24' 27.310" E	27° 10' 16.544" N
64			Pharenda Sarvjeet				83° 24' 16.392" E	27° 9' 47.127" N
65			Pharenda Range				83° 25' 42.462" E	27° 8' 22.683" N
66			Bhagwanpur				83° 24' 56.271" E	27° 9' 7.498" N
67			Jalalgarh				83° 24' 47.440" E	27° 8' 16.627" N
68			Harraiya				83° 24' 1.918" E	27° 8' 4.722" N
69			Panditpur				83° 23' 58.337" E	27° 7' 37.877" N
70			Bhainsihya				83° 24' 52.050" E	27° 7' 4.756" N
71			Bahadur Garh				83° 23' 59.257" E	27° 7' 13.620" N
72			Ramnagar 231 Nirnam Pach				83° 24' 0.459" E	27° 6' 22.153" N
73			Barat Garha				83° 23' 56.084" E	27° 5' 35.570" N

**MAP FOR FLOOD AFFECTED AND WATERLOGGED AREAS ALONG GONAH, ROHINI, JHARAH AND CHHOTI GANDAK RIVERS IN PARTS OF MAHARAJGANJ DISTRICT, U.P.  
( FLOOD AFFECTED AREA 1992 ha. AS ON 17 AUGUST 2021 )**



**Legend**

- District Boundary
- Block Boundary
- Village Boundary
- Major Rivers
- Flood As on 17 Aug 2021

Note :- Heavy Rain Inundated areas in parts of U.P ( as on 17 August 2021) received from NRSC/ISRO, Hyderabad.

DISASTER MANAGEMENT CELL, SWRD,  
REMOTE SENSING APPLICATIONS CENTRE - U.P,  
LUCKNOW.