

List of flood affected near by villages in Chandauli District (U.P.) as on 17th Aug. 2021

Flood affected blocks=2

Flood affected villages=22

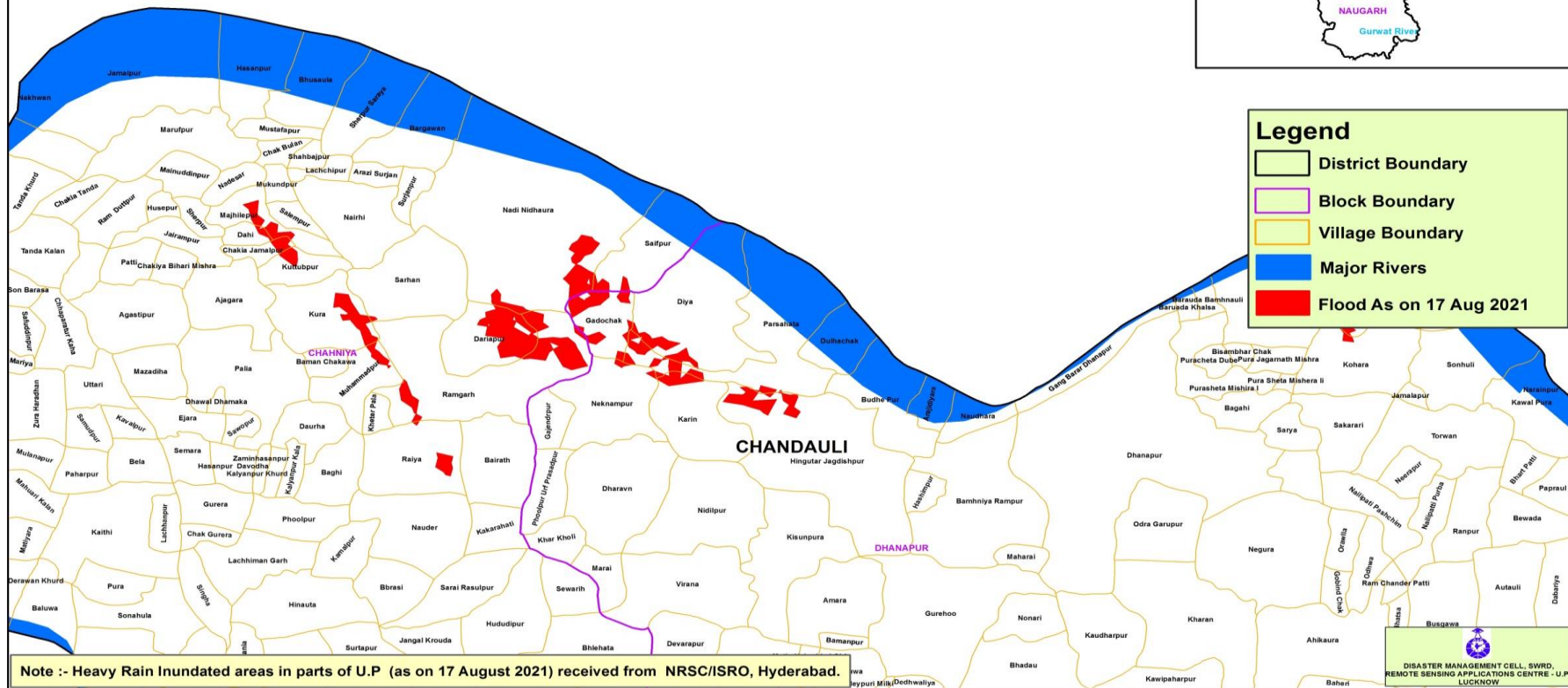
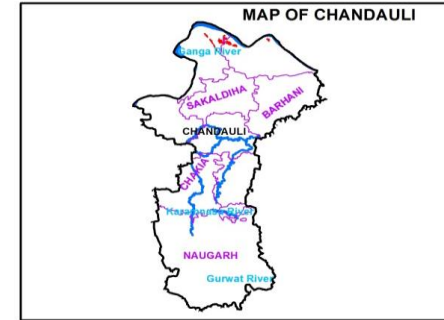
Flood affected area=380 ha.

S.N.	DISTRICT	BLOCK	VILLAGE	BLOCK	VILLAGE	AFFECTED AREA (in Ha.)	LONGITUDE	LATITUDE
1	CHANDAULI	CHAHNIYA	Nadi Nidhaura	2	22	380	83° 15' 45.803" E	25° 29' 53.462" N
2			Majhilepur				83° 13' 11.769" E	25° 29' 46.756" N
3			Dahi				83° 13' 0.522" E	25° 29' 37.405" N
4			Chakia Jamalpur				83° 13' 8.087" E	25° 29' 27.371" N
5			Kuttubpur				83° 13' 32.227" E	25° 29' 15.940" N
6			Kura				83° 13' 44.719" E	25° 28' 45.043" N
7			Sarhan				83° 14' 39.002" E	25° 29' 8.231" N
8			Dariapur				83° 15' 20.738" E	25° 28' 29.848" N
9			Ramgarh				83° 15' 15.146" E	25° 28' 9.727" N
10			Muhammadpur				83° 14' 5.240" E	25° 28' 1.660" N
11			Raiya				83° 14' 38.589" E	25° 27' 11.812" N
12			Saifpur				83° 16' 58.965" E	25° 29' 31.257" N
13		DHANAPUR	Gadochak				83° 16' 29.845" E	25° 28' 41.752" N
14			Gangwara Amadpur				83° 23' 28.430" E	25° 29' 18.684" N
15			Kohara				83° 23' 50.744" E	25° 28' 16.172" N
16			Parsahata				83° 18' 5.712" E	25° 28' 39.552" N
17			Neknampur				83° 16' 32.977" E	25° 27' 47.996" N
18			Karin				83° 17' 24.622" E	25° 27' 37.853" N
19			Hingutar Jagdishpur				83° 18' 40.242" E	25° 27' 10.551" N
20			Amadpur				83° 22' 58.097" E	25° 28' 55.058" N
21			Gangwara Nakanwa Medhw				83° 23' 53.998" E	25° 29' 13.900" N
22			Diya				83° 17' 26.308" E	25° 28' 51.926" N

**MAP FOR FLOOD AFFECTED AND WATERLOGGED AREAS ALONG GANGA RIVER IN PARTS OF CHANDAULI DISTRICT, U.P.
(FLOOD AFFECTED AREA 380 ha. AS ON 17 AUGUST 2021)**



0 0.75 1.5 3 4.5 6 Kilometers



Legend

- District Boundary
- Block Boundary
- Village Boundary
- Major Rivers
- Flood As on 17 Aug 2021

Note :- Heavy Rain Inundated areas in parts of U.P (as on 17 August 2021) received from NRSC/ISRO, Hyderabad.

