

List of flood affected near by villages in Basti District (U.P.) as on 17th Aug. 2021

Flood affected blocks=9

Flood affected villages=72

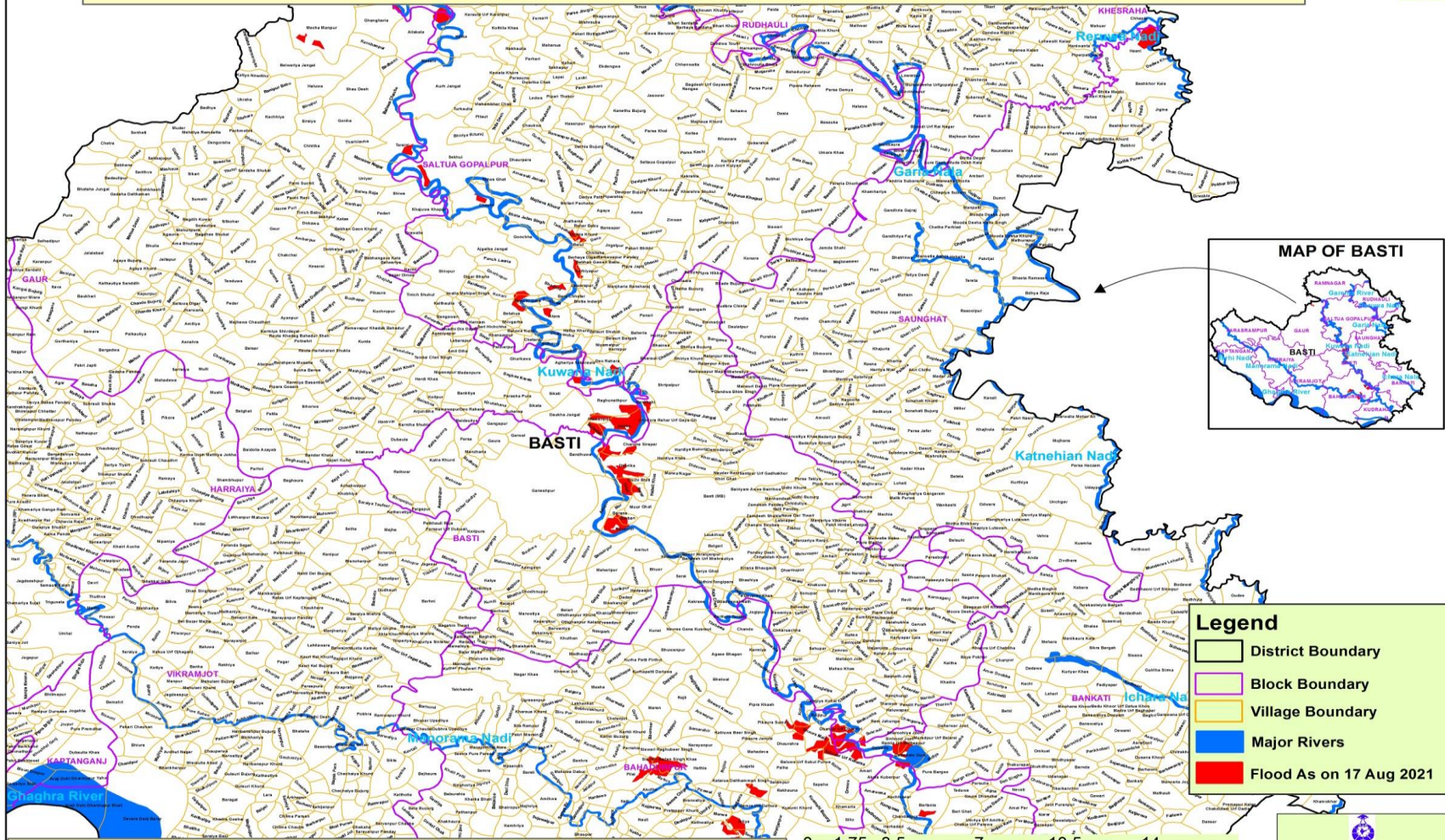
Flood affected area=890 ha.

S.N.	DISTRICT	BLOCK	VILLAGE	BLOCK	VILLAGE	AFFECTED AREA (in Ha.)	LONGITUDE	LATITUDE
1	BASTI	BAHADURPUR	Pipra Khash	9	72	890	82° 45' 23.646" E	26° 42' 47.346" N
2			Kohal				82° 46' 19.271" E	26° 42' 40.233" N
3			Bhaura Mala				82° 46' 36.784" E	26° 42' 1.700" N
4			Dhaurahra				82° 46' 2.099" E	26° 41' 49.964" N
5			Sahupal Urf Koharsa				82° 47' 19.608" E	26° 41' 31.605" N
6			Siswari Raghubeer Singh				82° 42' 58.219" E	26° 41' 41.614" N
7			Siswari Badan Singh Khas				82° 43' 26.659" E	26° 41' 27.342" N
8			Baluwa Urf Sukul Purwa				82° 46' 33.426" E	26° 41' 23.332" N
9			Hathia				82° 44' 4.537" E	26° 41' 14.347" N
10			Katarua Dalthamman Singh				82° 44' 59.071" E	26° 40' 55.951" N
11			Matera				82° 43' 18.729" E	26° 40' 57.423" N
12			Bahadurpur				82° 45' 23.437" E	26° 40' 44.134" N
13			Merwa				82° 44' 31.211" E	26° 40' 6.045" N
14			Ailiya				82° 45' 6.271" E	26° 39' 57.132" N
15			Karsari				82° 46' 36.861" E	26° 39' 34.197" N
16			Dofara				82° 44' 19.502" E	26° 39' 23.765" N
17			Sonha				82° 45' 14.206" E	26° 39' 34.114" N
18			Lonha				82° 45' 12.062" E	26° 39' 8.067" N
19			Pilai				82° 42' 33.142" E	26° 41' 5.551" N
20		BANKATI	Gawada				82° 47' 52.720" E	26° 41' 46.973" N
21			Ramla Urf Natheepur				82° 48' 35.175" E	26° 41' 50.887" N
22			Dadawala Guni				82° 48' 43.637" E	26° 41' 32.991" N
23			Pidiya				82° 49' 12.154" E	26° 41' 30.520" N
24		BASTI	Charoha Sirapar				82° 42' 55.614" E	26° 49' 10.987" N
25			Bandhuwa				82° 41' 28.550" E	26° 48' 59.463" N
26			Dhorika				82° 42' 27.257" E	26° 48' 37.400" N
27			Unchi Bhati				82° 42' 45.339" E	26° 48' 15.969" N
28			Deuri				82° 42' 27.071" E	26° 48' 4.931" N

29			Barar			82° 42' 46.209" E	26° 47' 58.479" N
30			Barana			82° 42' 20.152" E	26° 47' 27.756" N
31			Barban			82° 42' 29.902" E	26° 47' 19.293" N
32			Nauachh			82° 42' 25.497" E	26° 47' 4.732" N
33			Ghodora Rehar Urf Gaya Gh			82° 43' 27.848" E	26° 49' 44.371" N
34			Bankashi			82° 42' 54.446" E	26° 50' 10.025" N
35			Baakuraha			82° 47' 44.001" E	26° 42' 25.459" N
36			Dhanjor Urf Dhorrhri			82° 47' 14.889" E	26° 42' 11.732" N
37			Sukrauli			82° 47' 56.196" E	26° 42' 8.105" N
38		GAUR	Macha Manpur			82° 35' 46.073" E	26° 59' 19.648" N
39			Ghangharia			82° 36' 59.523" E	26° 59' 29.242" N
40			Ailakala			82° 37' 53.045" E	26° 59' 12.292" N
41			Taraini			82° 37' 27.643" E	26° 56' 26.655" N
42			Aghariya			82° 41' 7.242" E	26° 50' 55.185" N
43			Raghunathpur			82° 42' 9.540" E	26° 50' 13.294" N
44			Daukha Jangal			82° 41' 7.422" E	26° 49' 51.819" N
45			Jataha			82° 42' 29.222" E	26° 49' 35.583" N
46			Mainsirpur			82° 41' 52.563" E	26° 49' 45.637" N
47			Mahadal			82° 41' 46.656" E	26° 49' 27.460" N
48		KUDRAHA	Akela Kuberpur			82° 48' 13.578" E	26° 41' 1.142" N
49			Gunar			82° 48' 38.558" E	26° 40' 58.744" N
50			Bartania			82° 49' 7.418" E	26° 40' 20.265" N
51			Tiutha			82° 46' 54.682" E	26° 38' 59.465" N
52		RAMNAGAR	Turkaulia Urf Karmahia			82° 36' 14.843" E	27° 0' 56.415" N
53			Narkatha			82° 37' 5.726" E	27° 0' 4.990" N
54			Barahara Bujurg			82° 38' 2.028" E	27° 0' 6.397" N
55		RUDHAULI	Chhapia			82° 53' 46.623" E	26° 59' 32.384" N
56		SALTUA GOPALPUR	Tarhauha			82° 41' 1.792" E	26° 54' 24.853" N
57			Darhia Khurd			82° 41' 29.967" E	26° 54' 15.047" N
58			Dano			82° 41' 47.657" E	26° 54' 8.943" N
59			Balui			82° 41' 25.434" E	26° 54' 1.914" N
60			Korhiyapur			82° 41' 35.650" E	26° 53' 22.158" N
61			Bhadana			82° 40' 51.825" E	26° 52' 58.575" N
62			Chaura			82° 39' 15.168" E	26° 54' 58.698" N

63			Katka				82° 38' 55.188" E	26° 59' 5.739" N
64			Sekhui				82° 38' 28.486" E	26° 56' 9.037" N
65			Ajgaiba Jangal				82° 39' 52.049" E	26° 53' 48.793" N
66			Harriya				82° 42' 0.801" E	26° 50' 45.244" N
67			Konari				82° 39' 42.390" E	26° 52' 47.480" N
68			Bhawar Gara				82° 40' 18.308" E	26° 52' 39.297" N
69			Betahua				82° 40' 9.174" E	26° 52' 15.600" N
70			Atara				82° 40' 51.124" E	26° 52' 16.014" N
71			Deo Rahara				82° 42' 3.788" E	26° 51' 11.302" N
72		SAUNGHAT	Hasni				82° 53' 44.889" E	26° 58' 47.883" N

MAP FOR FLOOD AFFECTED AND WATERLOGGED AREAS ALONG KUWANA, AMI AND RERUWRA RIVERS IN PARTS OF BASTI DISTRICT, U.P. (FLOOD AFFECTED AREA 890 ha. AS ON 17 AUGUST 2021)



- Legend**
- District Boundary
 - Block Boundary
 - Village Boundary
 - Major Rivers
 - Flood As on 17 Aug 2021

Note :- Heavy Rain Inundated areas in parts of U.P (as on 17 August 2021) received from NRSC/ISRO, Hyderabad.

