

List of flood affected near by villages in Ballia District (U.P.) as on 17th Aug. 2021

Flood affected blocks=14

Flood affected villages=282

Flood affected area=16441 ha.

| S.N. | DISTRICT | BLOCK | VILLAGE | BLOCK | VILLAGE | AFFECTED AREA (in Ha.) | LONGITUDE | LATITUDE |
|------|---------------|----------------|-------------------------|-------|---------|------------------------|-------------------|-------------------|
| 1 | BALLIA | BAIRIYA | Adhsijhua | 14 | 282 | 16441 | 84° 31' 25.691" E | 25° 49' 37.376" N |
| 2 | | | Man Garah | | | | 84° 27' 22.082" E | 25° 50' 39.388" N |
| 3 | | | Shiwal | | | | 84° 30' 15.937" E | 25° 50' 13.881" N |
| 4 | | | Hewantpur | | | | 84° 28' 51.910" E | 25° 49' 57.620" N |
| 5 | | | Sureman Pur | | | | 84° 29' 24.310" E | 25° 49' 12.908" N |
| 6 | | | Raja Tengaraha | | | | 84° 30' 53.016" E | 25° 49' 14.527" N |
| 7 | | | Upadhyapur | | | | 84° 29' 44.678" E | 25° 48' 33.199" N |
| 8 | | | Hanuman Garh | | | | 84° 26' 38.180" E | 25° 50' 32.920" N |
| 9 | | | Shri Nagar | | | | 84° 25' 23.571" E | 25° 49' 52.107" N |
| 10 | | | Durjanpur | | | | 84° 27' 27.356" E | 25° 49' 36.909" N |
| 11 | | | Nauka Gaon | | | | 84° 25' 24.578" E | 25° 47' 26.094" N |
| 12 | | | Balihar | | | | 84° 24' 38.926" E | 25° 47' 26.341" N |
| 13 | | | Kawal Chhapra | | | | 84° 23' 30.079" E | 25° 45' 1.878" N |
| 14 | | | Tola Bara Babu | | | | 84° 23' 51.999" E | 25° 44' 51.545" N |
| 15 | | | Jagdeva | | | | 84° 26' 17.545" E | 25° 45' 19.240" N |
| 16 | | | Pandeypur Mu. Durjanpur | | | | 84° 24' 21.032" E | 25° 44' 13.047" N |
| 17 | | | Udiy Chhapra | | | | 84° 23' 40.211" E | 25° 44' 12.419" N |
| 18 | | | Chai Chhupra | | | | 84° 30' 49.719" E | 25° 48' 28.391" N |
| 19 | | | Govindpur | | | | 84° 27' 17.832" E | 25° 45' 27.305" N |
| 20 | | | Chandpur | | | | 84° 28' 9.178" E | 25° 44' 58.284" N |
| 21 | | | Charajpura | | | | 84° 27' 44.111" E | 25° 44' 36.531" N |
| 22 | | | Shri Palpur | | | | 84° 27' 29.576" E | 25° 44' 12.598" N |
| 23 | | | Noaw Ranga | | | | 84° 25' 6.596" E | 25° 42' 49.485" N |
| 24 | | | Bhuwal Chhapra | | | | 84° 24' 37.661" E | 25° 43' 26.772" N |
| 25 | | | Bhagwanpur | | | | 84° 25' 23.203" E | 25° 42' 3.402" N |
| 26 | | BANSDIH | Halpur | | | | 84° 9' 49.546" E | 25° 54' 57.092" N |
| 27 | | | Janpur | | | | 84° 10' 31.366" E | 25° 54' 11.217" N |
| 28 | | | Saman Pura | | | | 84° 10' 59.914" E | 25° 54' 3.197" N |

| | | | | | | | |
|----|--|--------------------|--------------------------|--|--|-------------------|-------------------|
| 29 | | | Kewtallia Khurd | | | 84° 11' 9.511" E | 25° 53' 55.676" N |
| 30 | | | Kewtallia Kala | | | 84° 11' 26.135" E | 25° 53' 48.945" N |
| 31 | | | Marwattia Noubrar | | | 84° 18' 34.385" E | 25° 54' 59.027" N |
| 32 | | | Parbatpur | | | 84° 14' 10.319" E | 25° 55' 16.433" N |
| 33 | | | Hardattpur | | | 84° 13' 29.201" E | 25° 54' 52.877" N |
| 34 | | | Khiru Chhapra Nambari | | | 84° 15' 42.524" E | 25° 55' 5.579" N |
| 35 | | | Rampur Noubrar | | | 84° 19' 6.330" E | 25° 55' 0.112" N |
| 36 | | | Sarangpur | | | 84° 14' 56.274" E | 25° 54' 47.427" N |
| 37 | | | Marawattiya Nambari | | | 84° 18' 52.252" E | 25° 54' 17.142" N |
| 38 | | | Khap Dhannantar | | | 84° 19' 35.521" E | 25° 54' 11.889" N |
| 39 | | | Khewsad | | | 84° 16' 37.284" E | 25° 53' 59.076" N |
| 40 | | | Rampur Nambari | | | 84° 17' 26.275" E | 25° 54' 26.030" N |
| 41 | | | Regha | | | 84° 17' 58.737" E | 25° 54' 5.356" N |
| 42 | | | Chitbiswa Kala | | | 84° 18' 43.046" E | 25° 53' 56.530" N |
| 43 | | | Kol Kala | | | 84° 19' 8.190" E | 25° 53' 18.438" N |
| 44 | | | Diyara Bhagar | | | 84° 21' 15.828" E | 25° 55' 26.109" N |
| 45 | | | Chak Bilium Saheb | | | 84° 19' 59.356" E | 25° 54' 57.134" N |
| 46 | | | Diyara Lakhmi Rai | | | 84° 20' 6.119" E | 25° 54' 28.023" N |
| 47 | | | Baghawan | | | 84° 20' 58.722" E | 25° 54' 15.852" N |
| 48 | | | Maharajpur | | | 84° 20' 34.897" E | 25° 53' 42.319" N |
| 49 | | | Kamalpur Taluka Kharouli | | | 84° 20' 11.552" E | 25° 53' 50.358" N |
| 50 | | | Chandpur | | | 84° 19' 51.863" E | 25° 53' 34.624" N |
| 51 | | BARUWARDARI | Harizanpur | | | 84° 9' 56.019" E | 25° 54' 40.570" N |
| 52 | | | Majha | | | 84° 10' 52.441" E | 25° 53' 52.212" N |
| 53 | | | Dhanpur | | | 84° 10' 23.455" E | 25° 53' 41.849" N |
| 54 | | | Talpuni Sani Abal | | | 84° 11' 18.317" E | 25° 53' 33.995" N |
| 55 | | BELHARI | Samarath Pah | | | 84° 19' 39.318" E | 25° 47' 28.288" N |
| 56 | | | Dudhaila | | | 84° 21' 4.326" E | 25° 47' 30.897" N |
| 57 | | | Shukla Chhapra | | | 84° 21' 3.006" E | 25° 46' 13.548" N |
| 58 | | | Madadih | | | 84° 19' 51.637" E | 25° 45' 55.257" N |
| 59 | | | Garayan | | | 84° 21' 25.964" E | 25° 45' 17.794" N |
| 60 | | | Bouna Chak | | | 84° 22' 16.204" E | 25° 47' 48.846" N |
| 61 | | | Khajkuhati | | | 84° 22' 15.927" E | 25° 47' 18.096" N |
| 62 | | | Dagarabad | | | 84° 21' 55.475" E | 25° 44' 59.423" N |

| | | | | | | | |
|----|--|--------------------|-------------------------|--|--|-------------------|-------------------|
| 63 | | | Baghoonch | | | 84° 19' 59.021" E | 25° 44' 52.575" N |
| 64 | | | Bagahin | | | 84° 20' 48.496" E | 25° 44' 43.994" N |
| 65 | | | Panchrukha | | | 84° 22' 29.995" E | 25° 46' 1.275" N |
| 66 | | | Bharsouta | | | 84° 18' 48.557" E | 25° 44' 43.306" N |
| 67 | | | Haldi | | | 84° 18' 49.704" E | 25° 43' 42.131" N |
| 68 | | | Jawahi | | | 84° 16' 44.443" E | 25° 40' 44.636" N |
| 69 | | | Kalyanpur | | | 84° 16' 53.016" E | 25° 40' 26.156" N |
| 70 | | | Sujanipur | | | 84° 16' 23.999" E | 25° 43' 30.076" N |
| 71 | | | Bahadurpur | | | 84° 17' 4.186" E | 25° 43' 55.259" N |
| 72 | | | Bajaraha | | | 84° 17' 14.309" E | 25° 43' 34.099" N |
| 73 | | | Chain Chhapra | | | 84° 16' 38.692" E | 25° 43' 14.575" N |
| 74 | | | Hans Nagar | | | 84° 18' 47.059" E | 25° 41' 41.320" N |
| 75 | | | A.Choubey Bel Gangbarar | | | 84° 17' 11.959" E | 25° 43' 21.207" N |
| 76 | | | Jeemakhap | | | 84° 16' 47.348" E | 25° 42' 4.466" N |
| 77 | | DUBHAR | Ballia (MB) | | | 84° 9' 43.928" E | 25° 44' 30.028" N |
| 78 | | | Dubharh | | | 84° 14' 49.527" E | 25° 45' 11.672" N |
| 79 | | | Janari | | | 84° 13' 30.211" E | 25° 44' 32.621" N |
| 80 | | | Pandeypur | | | 84° 13' 56.758" E | 25° 44' 36.734" N |
| 81 | | | Ugrasenpur | | | 84° 15' 23.915" E | 25° 44' 13.875" N |
| 82 | | | Bhelsharh | | | 84° 14' 30.028" E | 25° 43' 18.921" N |
| 83 | | | Mafi Janari | | | 84° 14' 5.848" E | 25° 44' 22.090" N |
| 84 | | | Shivpur Diyar Gangbarar | | | 84° 14' 24.072" E | 25° 40' 35.157" N |
| 85 | | | Agarouli | | | 84° 15' 26.741" E | 25° 42' 43.847" N |
| 86 | | GARHWAR | Teekha | | | 84° 2' 58.278" E | 25° 45' 25.929" N |
| 87 | | | Mehamapur | | | 83° 59' 22.810" E | 25° 46' 34.199" N |
| 88 | | HANUMANGANJ | Malikpura Taluk Amdaria | | | 84° 6' 52.888" E | 25° 45' 16.901" N |
| 89 | | | Bijora | | | 84° 6' 24.453" E | 25° 45' 11.169" N |
| 90 | | | Nasirabad | | | 84° 6' 13.144" E | 25° 44' 57.735" N |
| 91 | | | Dewaria Kala | | | 84° 7' 5.399" E | 25° 44' 58.320" N |
| 92 | | | Gangahara | | | 84° 4' 31.557" E | 25° 44' 49.794" N |
| 93 | | | Cheruia | | | 84° 3' 23.480" E | 25° 44' 13.316" N |
| 94 | | | Parsipatti | | | 84° 7' 11.253" E | 25° 44' 29.879" N |
| 95 | | | Rampur Chit | | | 84° 2' 39.496" E | 25° 43' 27.437" N |
| 96 | | | Inderpur | | | 84° 4' 0.822" E | 25° 43' 34.019" N |

| | | | | | | | |
|-----|--|----------------------|--------------------------|--|--|-------------------|-------------------|
| 97 | | MANIYAR | Jildapur | | | 84° 7' 35.407" E | 26° 3' 10.354" N |
| 98 | | | Diyara Harana Tar | | | 84° 8' 12.190" E | 26° 2' 30.269" N |
| 99 | | | Diyara Mahaji Kashi Datt | | | 84° 8' 28.174" E | 26° 2' 4.279" N |
| 100 | | | Diyara Maniyar li | | | 84° 9' 23.490" E | 26° 1' 22.440" N |
| 101 | | | Kharid | | | 84° 6' 56.326" E | 26° 2' 50.326" N |
| 102 | | | Balupur | | | 84° 6' 34.275" E | 26° 0' 11.430" N |
| 103 | | | Gai Ghat | | | 84° 8' 45.418" E | 26° 0' 46.038" N |
| 104 | | | Letaraha | | | 84° 8' 42.375" E | 26° 0' 22.795" N |
| 105 | | | Bahdura | | | 84° 7' 55.693" E | 26° 0' 28.584" N |
| 106 | | | Fatehpur Noubrar | | | 84° 9' 49.967" E | 26° 0' 11.901" N |
| 107 | | | Manikpur | | | 84° 11' 59.260" E | 25° 57' 54.078" N |
| 108 | | | Kotwa | | | 84° 12' 25.044" E | 25° 57' 33.022" N |
| 109 | | | Khadipur | | | 84° 12' 46.472" E | 25° 57' 6.731" N |
| 110 | | | Tahirpur Taluka Bansdih | | | 84° 13' 10.750" E | 25° 55' 47.467" N |
| 111 | | | Malahi Chak | | | 84° 13' 10.729" E | 25° 58' 18.266" N |
| 112 | | | Sultanpur Taluka Bansdih | | | 84° 13' 25.381" E | 25° 56' 28.754" N |
| 113 | | | Bhoj Purwa | | | 84° 14' 33.974" E | 25° 56' 0.161" N |
| 114 | | | A. Khiruchapara Nobrar | | | 84° 17' 25.237" E | 25° 55' 35.351" N |
| 115 | | | Chakki Diyara Sultanpur | | | 84° 15' 28.019" E | 25° 57' 12.961" N |
| 116 | | MURLI CHHAPRA | Ibarahimabad Noabarar | | | 84° 35' 46.022" E | 25° 46' 5.403" N |
| 117 | | | Chand Diar | | | 84° 34' 0.287" E | 25° 48' 20.705" N |
| 118 | | | Ibarahimabad Uparwar | | | 84° 32' 44.634" E | 25° 46' 24.632" N |
| 119 | | | Korrha Uparwar | | | 84° 33' 23.002" E | 25° 44' 42.180" N |
| 120 | | | Korrha Nobarar | | | 84° 36' 37.046" E | 25° 44' 34.118" N |
| 121 | | | Sripatipur | | | 84° 31' 56.949" E | 25° 44' 5.854" N |
| 122 | | | Dalan Chhapra | | | 84° 31' 32.908" E | 25° 43' 40.078" N |
| 123 | | | Wajidpur | | | 84° 30' 54.412" E | 25° 42' 55.823" N |
| 124 | | | Bahuara | | | 84° 27' 53.195" E | 25° 43' 13.203" N |
| 125 | | | Uchitpura | | | 84° 27' 42.532" E | 25° 42' 46.163" N |
| 126 | | | Khawashpur | | | 84° 33' 11.143" E | 25° 43' 27.886" N |
| 127 | | | Rampur Korahara | | | 84° 33' 12.340" E | 25° 42' 11.366" N |
| 128 | | | Rampur | | | 84° 31' 47.127" E | 25° 43' 2.548" N |
| 129 | | | Gangapur | | | 84° 31' 32.299" E | 25° 42' 59.560" N |
| 130 | | | Dharmapur | | | 84° 31' 59.715" E | 25° 42' 43.871" N |

| | | | | | | | |
|-----|--|-------------------|--------------------------|--|--|-------------------|-------------------|
| 131 | | | Sigahi | | | 84° 32' 33.424" E | 25° 42' 56.030" N |
| 132 | | | Horwahi | | | 84° 31' 52.217" E | 25° 42' 25.497" N |
| 133 | | NAWA NAGAR | Diyara Karmaha | | | 84° 6' 28.050" E | 26° 4' 26.730" N |
| 134 | | | Son Purwa | | | 84° 5' 36.426" E | 26° 0' 3.733" N |
| 135 | | PANDAH | Masumpur | | | 84° 4' 40.546" E | 25° 59' 55.089" N |
| 136 | | REWATI | Hasanpura | | | 84° 18' 20.558" E | 25° 53' 30.417" N |
| 137 | | | Diara Gangapur | | | 84° 20' 38.911" E | 25° 56' 28.800" N |
| 138 | | | Bashistha Nagar | | | 84° 27' 33.397" E | 25° 52' 7.326" N |
| 139 | | | Jharkataha | | | 84° 25' 23.658" E | 25° 51' 8.459" N |
| 140 | | | Majha | | | 84° 26' 3.282" E | 25° 52' 4.679" N |
| 141 | | | Gopal Nagar | | | 84° 29' 24.119" E | 25° 51' 51.546" N |
| 142 | | | Araji Mafi Jharkataha Ea | | | 84° 26' 53.432" E | 25° 51' 22.936" N |
| 143 | | | Nawak Gaon | | | 84° 25' 33.928" E | 25° 51' 40.130" N |
| 144 | | | Deopur | | | 84° 26' 22.267" E | 25° 51' 27.801" N |
| 145 | | | Mathnag Nath | | | 84° 26' 9.883" E | 25° 51' 8.845" N |
| 146 | | | Kachhua | | | 84° 23' 54.473" E | 25° 50' 12.402" N |
| 147 | | | Nouwa Bara | | | 84° 23' 52.797" E | 25° 49' 16.755" N |
| 148 | | | Moon Chhupra | | | 84° 25' 17.196" E | 25° 48' 31.398" N |
| 149 | | | Araji Mafi Moon Chhupra | | | 84° 25' 39.143" E | 25° 48' 55.683" N |
| 150 | | | Mansingh Chhapra | | | 84° 24' 33.412" E | 25° 47' 56.337" N |
| 151 | | SIAR | Chainpur T. Parshurampur | | | 83° 55' 1.971" E | 26° 4' 34.326" N |
| 152 | | | Haldi Rampur | | | 83° 54' 51.914" E | 26° 6' 25.296" N |
| 153 | | | Bahuta Chak Upadhaya | | | 83° 55' 24.612" E | 26° 5' 17.394" N |
| 154 | | | Arazi Guloura | | | 83° 49' 11.091" E | 26° 11' 7.781" N |
| 155 | | | Bhagwanpur | | | 83° 47' 9.447" E | 26° 9' 38.383" N |
| 156 | | | Chandayar Kala | | | 83° 49' 51.850" E | 26° 9' 45.187" N |
| 157 | | | Indauli Zamin Indalli | | | 83° 49' 52.392" E | 26° 9' 17.477" N |
| 158 | | | Sikroor Chandour | | | 83° 49' 53.822" E | 26° 8' 41.888" N |
| 159 | | | Mubarakpur | | | 83° 50' 43.958" E | 26° 8' 41.654" N |
| 160 | | | Turtipar | | | 83° 51' 35.979" E | 26° 9' 8.196" N |
| 161 | | | Sonadih | | | 83° 48' 15.411" E | 26° 9' 55.866" N |
| 162 | | | Doth | | | 83° 47' 45.268" E | 26° 9' 14.801" N |
| 163 | | | Piprouli | | | 83° 52' 42.045" E | 26° 6' 41.562" N |
| 164 | | | Kupat | | | 83° 51' 57.367" E | 26° 6' 0.124" N |

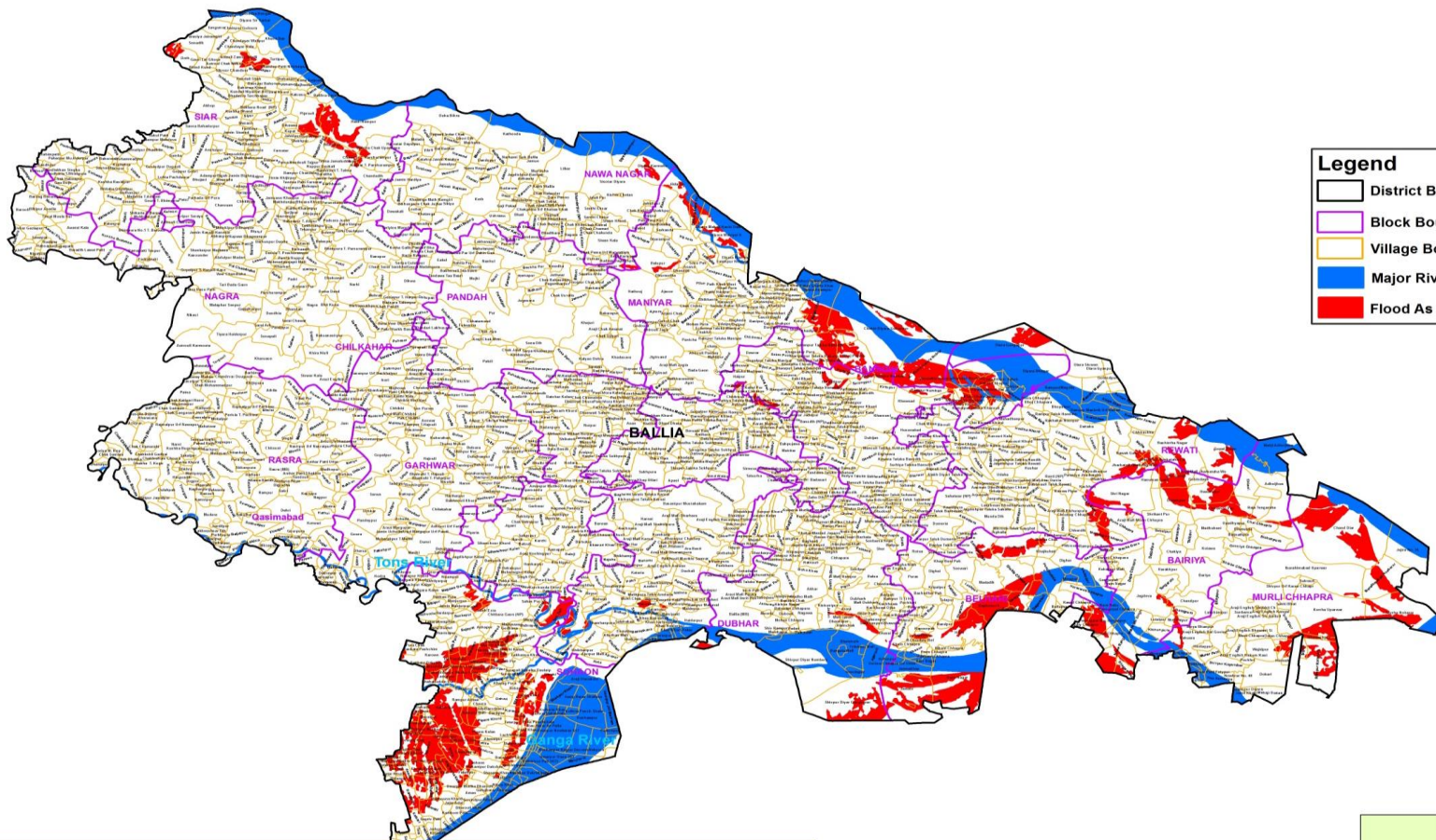
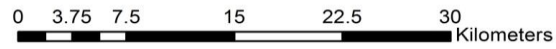
| | | | | | | | |
|-----|--|---------------|-------------------------|--|--|-------------------|-------------------|
| 165 | | | Jahidpur | | | 83° 52' 2.246" E | 26° 5' 46.993" N |
| 166 | | | Shekhpur | | | 83° 52' 21.219" E | 26° 5' 33.917" N |
| 167 | | | Kunwarpur | | | 83° 52' 47.460" E | 26° 5' 42.535" N |
| 168 | | | Shahpur Afga | | | 83° 53' 0.536" E | 26° 5' 14.391" N |
| 169 | | | Bhantpur | | | 83° 53' 32.469" E | 26° 5' 23.537" N |
| 170 | | | Telma Jamaluddinpur | | | 83° 53' 57.559" E | 26° 4' 39.387" N |
| 171 | | | Chandadih | | | 83° 55' 6.642" E | 26° 4' 0.215" N |
| 172 | | SOHAON | Tete Dad | | | 84° 2' 36.442" E | 25° 44' 32.224" N |
| 173 | | | Pipra Khurd | | | 84° 2' 0.052" E | 25° 44' 39.865" N |
| 174 | | | Nagawa Ganyee | | | 83° 58' 38.796" E | 25° 45' 42.284" N |
| 175 | | | Vsaratpur | | | 83° 59' 55.111" E | 25° 45' 27.258" N |
| 176 | | | Mustafabad | | | 83° 59' 23.230" E | 25° 45' 20.061" N |
| 177 | | | Tikari | | | 83° 59' 21.584" E | 25° 44' 49.662" N |
| 178 | | | Chitbara Gaon (NP) | | | 84° 0' 39.923" E | 25° 44' 43.533" N |
| 179 | | | Bankata Pashchim | | | 83° 56' 40.463" E | 25° 42' 59.356" N |
| 180 | | | Narahi | | | 84° 2' 16.818" E | 25° 41' 49.017" N |
| 181 | | | Karanpura | | | 84° 1' 37.307" E | 25° 41' 45.220" N |
| 182 | | | Bairiya | | | 84° 1' 19.709" E | 25° 41' 30.064" N |
| 183 | | | Sobantha | | | 84° 1' 4.119" E | 25° 41' 12.629" N |
| 184 | | | Raia Khari | | | 84° 1' 33.619" E | 25° 40' 53.661" N |
| 185 | | | Sateh Ezra | | | 83° 59' 33.295" E | 25° 44' 35.301" N |
| 186 | | | Usarauli | | | 84° 0' 8.406" E | 25° 43' 42.001" N |
| 187 | | | Mahreo | | | 84° 0' 42.406" E | 25° 43' 32.663" N |
| 188 | | | Bairi Dih | | | 84° 1' 4.103" E | 25° 43' 33.765" N |
| 189 | | | Malik Pura | | | 83° 58' 32.083" E | 25° 43' 11.337" N |
| 190 | | | Basdewa | | | 83° 59' 13.819" E | 25° 42' 58.200" N |
| 191 | | | Babhnauli | | | 83° 59' 42.770" E | 25° 42' 55.395" N |
| 192 | | | Turkpura Urf Bishunpura | | | 83° 58' 53.724" E | 25° 43' 1.674" N |
| 193 | | | Marchi Khurd | | | 84° 0' 11.676" E | 25° 43' 7.183" N |
| 194 | | | Hasaeepur | | | 84° 0' 29.651" E | 25° 43' 10.183" N |
| 195 | | | Bharat Chak | | | 84° 0' 10.717" E | 25° 42' 43.147" N |
| 196 | | | Hardas Chak | | | 84° 0' 28.867" E | 25° 42' 44.567" N |
| 197 | | | Tal Pundaha | | | 83° 58' 33.476" E | 25° 42' 30.435" N |
| 198 | | | Nilkanth Pur | | | 84° 0' 33.495" E | 25° 42' 25.633" N |

| | | | | | | | |
|-----|--|--|-------------------------|--|--|-------------------|-------------------|
| 199 | | | Talkarauti | | | 83° 59' 22.956" E | 25° 42' 23.372" N |
| 200 | | | Shripur | | | 84° 0' 14.904" E | 25° 42' 3.749" N |
| 201 | | | Singarpur | | | 83° 59' 37.113" E | 25° 42' 5.692" N |
| 202 | | | Araji Mafi Kaithauli | | | 83° 59' 42.163" E | 25° 41' 45.942" N |
| 203 | | | Baraura | | | 83° 59' 34.685" E | 25° 41' 29.983" N |
| 204 | | | Deharia | | | 83° 57' 16.777" E | 25° 40' 17.043" N |
| 205 | | | Kathariya | | | 83° 58' 13.455" E | 25° 40' 21.305" N |
| 206 | | | Rampur Mafi | | | 83° 59' 15.111" E | 25° 40' 7.360" N |
| 207 | | | Garurwa | | | 83° 57' 0.525" E | 25° 40' 15.812" N |
| 208 | | | Balua | | | 83° 58' 56.440" E | 25° 40' 1.355" N |
| 209 | | | Banaipur | | | 83° 57' 29.751" E | 25° 39' 54.999" N |
| 210 | | | Pipara Khurd | | | 83° 59' 52.645" E | 25° 39' 47.953" N |
| 211 | | | Pipara Kalan | | | 83° 59' 43.560" E | 25° 39' 19.385" N |
| 212 | | | Harbanshpur | | | 83° 58' 10.486" E | 25° 38' 59.927" N |
| 213 | | | Bahadur Chak | | | 83° 58' 51.292" E | 25° 38' 53.596" N |
| 214 | | | Musai Chak | | | 83° 56' 55.154" E | 25° 39' 51.900" N |
| 215 | | | Sikohabad | | | 83° 57' 12.201" E | 25° 39' 39.149" N |
| 216 | | | Shahpur Mutlke Tutuwari | | | 83° 57' 38.657" E | 25° 39' 22.903" N |
| 217 | | | Salemabad | | | 83° 56' 52.146" E | 25° 39' 29.012" N |
| 218 | | | Tutuwari | | | 83° 57' 28.588" E | 25° 38' 32.396" N |
| 219 | | | Neura | | | 83° 58' 23.415" E | 25° 38' 22.084" N |
| 220 | | | Budhi Chak | | | 83° 56' 19.158" E | 25° 38' 23.655" N |
| 221 | | | Pahia | | | 83° 56' 51.058" E | 25° 38' 11.759" N |
| 222 | | | Merwara Khurd | | | 83° 56' 33.895" E | 25° 38' 9.229" N |
| 223 | | | Tal Sayal | | | 83° 57' 58.945" E | 25° 37' 57.645" N |
| 224 | | | Ebrahimpur Adai | | | 83° 57' 44.222" E | 25° 37' 35.846" N |
| 225 | | | Bilaria | | | 84° 1' 0.999" E | 25° 40' 41.462" N |
| 226 | | | Siswa | | | 84° 1' 12.118" E | 25° 40' 0.954" N |
| 227 | | | Gangahara | | | 84° 1' 42.787" E | 25° 40' 8.490" N |
| 228 | | | Karenja | | | 84° 0' 51.292" E | 25° 40' 10.253" N |
| 229 | | | Tetarpur | | | 84° 0' 51.483" E | 25° 39' 36.512" N |
| 230 | | | Palia Khas | | | 84° 1' 28.908" E | 25° 39' 21.707" N |
| 231 | | | Lachhmanpur | | | 84° 0' 54.992" E | 25° 38' 59.847" N |
| 232 | | | Alawalpur | | | 84° 0' 2.969" E | 25° 38' 57.070" N |

| | | | | | | | |
|-----|--|--|--------------------------|--|--|-------------------|-------------------|
| 233 | | | Shrawanpur | | | 84° 1' 9.465" E | 25° 38' 45.257" N |
| 234 | | | Surahi | | | 84° 0' 40.219" E | 25° 38' 27.234" N |
| 235 | | | Rai Kishun Patti Khash | | | 84° 1' 10.989" E | 25° 38' 17.073" N |
| 236 | | | Kothia | | | 83° 59' 54.848" E | 25° 38' 42.889" N |
| 237 | | | Senduria | | | 83° 59' 50.949" E | 25° 38' 20.930" N |
| 238 | | | Sohaon | | | 83° 59' 26.589" E | 25° 37' 53.413" N |
| 239 | | | Champapur | | | 83° 59' 10.524" E | 25° 38' 22.602" N |
| 240 | | | Narsing Patti Doyam | | | 84° 0' 44.084" E | 25° 38' 17.761" N |
| 241 | | | Basantpur Uttari | | | 84° 0' 46.859" E | 25° 38' 4.748" N |
| 242 | | | Narsing Patti Doyam | | | 84° 0' 29.994" E | 25° 38' 10.386" N |
| 243 | | | Belchhipahi | | | 84° 0' 56.572" E | 25° 37' 47.070" N |
| 244 | | | Narshing Pati Aujwal | | | 84° 0' 33.145" E | 25° 37' 54.091" N |
| 245 | | | Basantpur Dakchini | | | 84° 0' 34.115" E | 25° 37' 44.118" N |
| 246 | | | Sheopur Khas | | | 84° 0' 36.013" E | 25° 37' 26.641" N |
| 247 | | | Churaili | | | 83° 56' 18.789" E | 25° 37' 37.348" N |
| 248 | | | Tetarpur Kalan | | | 83° 55' 54.301" E | 25° 37' 31.959" N |
| 249 | | | Shitalpatti | | | 84° 0' 25.852" E | 25° 37' 13.868" N |
| 250 | | | Nasirpur Mutkle Tutuwari | | | 83° 57' 0.743" E | 25° 37' 39.130" N |
| 251 | | | Akauani | | | 83° 56' 41.579" E | 25° 37' 20.718" N |
| 252 | | | Dularpur | | | 83° 56' 23.430" E | 25° 37' 8.478" N |
| 253 | | | Ebrahimpur Mafi | | | 83° 57' 26.369" E | 25° 37' 37.506" N |
| 254 | | | Jajar Khalsa | | | 83° 57' 34.315" E | 25° 36' 48.935" N |
| 255 | | | Jajar Mafi | | | 83° 57' 52.176" E | 25° 36' 50.012" N |
| 256 | | | Kamalpur | | | 83° 57' 10.334" E | 25° 36' 49.066" N |
| 257 | | | Umarpur Mutlke Bharouli | | | 84° 0' 2.958" E | 25° 37' 5.035" N |
| 258 | | | Fatehpur | | | 83° 59' 2.748" E | 25° 37' 27.848" N |
| 259 | | | Umarpur | | | 83° 59' 14.347" E | 25° 37' 23.393" N |
| 260 | | | Sherpur | | | 83° 59' 27.259" E | 25° 36' 56.077" N |
| 261 | | | Baghouna Kala | | | 83° 58' 23.105" E | 25° 37' 22.971" N |
| 262 | | | Shahpur Mutlke Amao | | | 83° 58' 58.416" E | 25° 37' 6.260" N |
| 263 | | | Amao | | | 83° 59' 7.976" E | 25° 36' 34.666" N |
| 264 | | | Baghouna Khurd | | | 83° 58' 15.684" E | 25° 36' 20.452" N |
| 265 | | | Kurmidi | | | 83° 57' 36.847" E | 25° 35' 52.671" N |
| 266 | | | Karown | | | 83° 57' 33.289" E | 25° 42' 41.634" N |

| | | | | | | | |
|-----|--|--|--------------------------|--|--|-------------------|-------------------|
| 267 | | | Bankata Dakshin | | | 83° 57' 11.574" E | 25° 42' 11.980" N |
| 268 | | | Laddupur | | | 83° 58' 14.360" E | 25° 41' 44.112" N |
| 269 | | | Firozpur | | | 83° 57' 53.687" E | 25° 41' 37.977" N |
| 270 | | | Shahabuddin Pur | | | 83° 57' 26.266" E | 25° 41' 31.691" N |
| 271 | | | Mubarakpur | | | 83° 59' 3.927" E | 25° 41' 45.584" N |
| 272 | | | Bahauddinpur Mutlke Chau | | | 83° 58' 29.533" E | 25° 41' 45.029" N |
| 273 | | | Bahauddinpur Mutalke Eta | | | 83° 58' 45.225" E | 25° 41' 39.093" N |
| 274 | | | Mangal Chak | | | 83° 56' 12.059" E | 25° 38' 6.853" N |
| 275 | | | Jalalpur | | | 83° 55' 55.438" E | 25° 38' 2.513" N |
| 276 | | | Punnipur | | | 83° 55' 31.801" E | 25° 38' 0.688" N |
| 277 | | | Tetarpur Mutkle Dularpur | | | 83° 55' 40.704" E | 25° 37' 51.736" N |
| 278 | | | Merwara Kala | | | 83° 56' 40.446" E | 25° 38' 53.774" N |
| 279 | | | Khajgipur | | | 83° 56' 10.440" E | 25° 37' 1.161" N |
| 280 | | | Ramgarh | | | 83° 56' 44.166" E | 25° 36' 22.185" N |
| 281 | | | Katkari | | | 83° 56' 58.944" E | 25° 35' 26.691" N |
| 282 | | | Bahora Mafi | | | 83° 56' 44.706" E | 25° 35' 2.600" N |

**MAP FOR FLOOD AFFECTED AND WATERLOGGED AREAS ALONG GANGA AND GHAGHRA RIVERS IN PARTS OF BALLIA DISTRICT, U.P.
(FLOOD AFFECTED AREA 16441 ha. AS ON 17 AUGUST 2021)**



- Legend**
- District Boundary
 - Block Boundary
 - Village Boundary
 - Major Rivers
 - Flood As on 17 Aug 2021

Note :- Heavy Rain Inundated areas in parts of U.P (as on 17 August 2021) received from NRSC/ISRO, Hyderabad.

