

List of flood affected near by villages in Azamgarh District (U.P.) as on 17th Aug. 2021

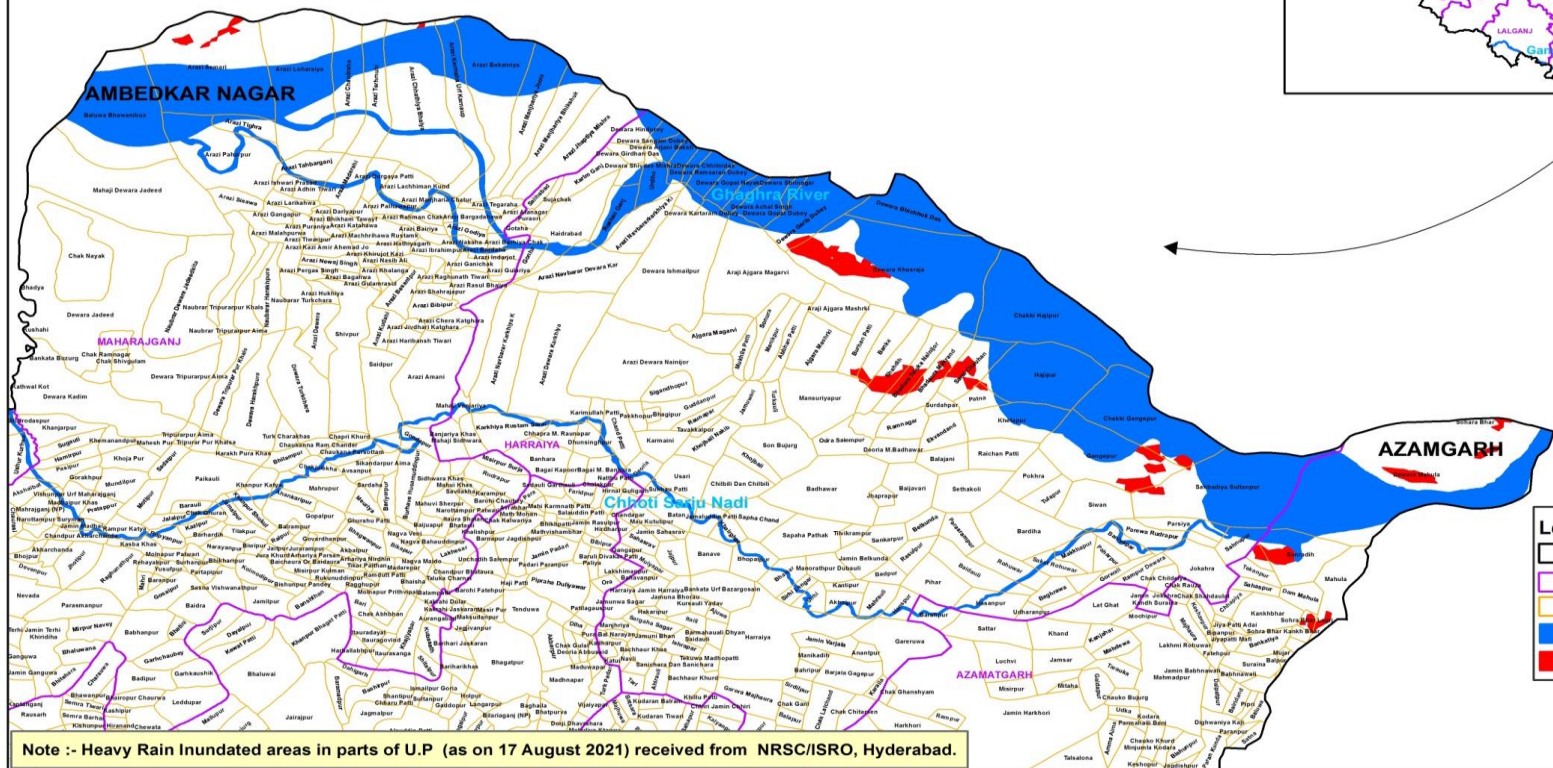
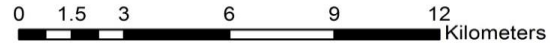
Flood affected blocks=3

Flood affected villages=22

Flood affected area=623 ha.

S.N.	DISTRICT	BLOCK	VILLAGE	BLOCK	VILLAGE	AFFECTED AREA (in Ha.)	LONGITUDE	LATITUDE
1	AZAMGARH	AZAMATGARH	Dewara Mahula	3	22	623	83° 28' 11.661" E	26° 15' 51.525" N
2			Sonradih				83° 26' 25.154" E	26° 14' 29.642" N
3			Baramadpur				83° 25' 49.225" E	26° 14' 26.305" N
4			Mahula				83° 26' 59.404" E	26° 13' 53.344" N
5			Sohra Bhar Lagri				83° 26' 33.868" E	26° 13' 21.853" N
6		HARRAIYA	Dewara Khasraja				83° 20' 19.924" E	26° 19' 22.831" N
7			Burhan Patti				83° 19' 43.848" E	26° 18' 10.882" N
8			Banka				83° 20' 4.680" E	26° 18' 5.482" N
9			Shahdih				83° 20' 11.574" E	26° 17' 41.824" N
10			Bhadora Taluka Nainijor				83° 20' 31.794" E	26° 17' 40.566" N
11			Bhadaura Makrand				83° 20' 49.667" E	26° 17' 35.141" N
12			Sarai Chauhan				83° 21' 24.405" E	26° 17' 42.663" N
13			Sahbadiya Sultanpur				83° 25' 20.524" E	26° 15' 37.267" N
14			Dewara Garib Dubey				83° 18' 55.148" E	26° 20' 22.478" N
15			Mansuriyapur				83° 19' 2.248" E	26° 17' 10.031" N
16			Chakki Gangepur				83° 24' 2.977" E	26° 16' 49.192" N
17			Hajipur				83° 22' 30.104" E	26° 17' 34.016" N
18			Patna				83° 21' 29.948" E	26° 17' 9.096" N
19			Gangepur				83° 23' 25.291" E	26° 16' 10.882" N
20			Sahnupur				83° 25' 30.221" E	26° 14' 41.882" N
21		MAHARAJGANJ	Arazi Semari				83° 9' 40.213" E	26° 22' 49.545" N
22			Arazi Chhathiya Bhaiya				83° 12' 53.337" E	26° 22' 11.696" N

**MAP FOR FLOOD AFFECTED AND WATERLOGGED AREAS ALONG GHAGHRA RIVER IN PARTS OF AZAMGARH DISTRICT, U.P.
(FLOOD AFFECTED AREA 623 ha. AS ON 17 AUGUST 2021)**



Legend

- District Boundary
- Block Boundary
- Village Boundary
- Major Rivers
- Flood As on 17 Aug 2021

Note :- Heavy Rain Inundated areas in parts of U.P. (as on 17 August 2021) received from NRSC/ISRO, Hyderabad.

