

**List of flood affected near by villages in Varanasi District (U.P.) as on 12th Aug. 2021**

**Flood affected blocks=5**

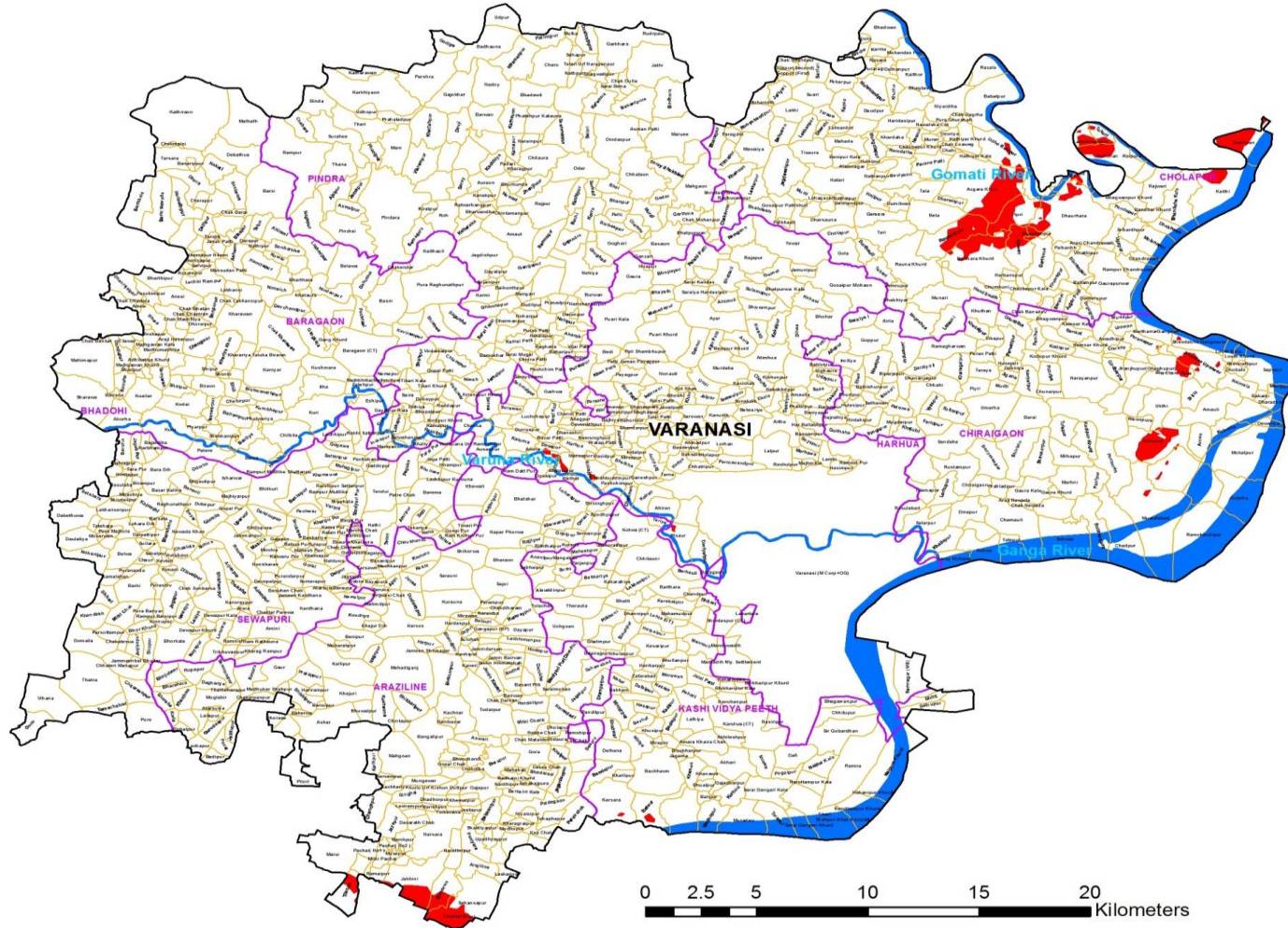
**Flood affected villages=40**

**Flood affected area=1879 ha.**

S.N.	DISTRICT	BLOCK	VILLAGE	BLOCK	VILLAGE	AFFECTED AREA ( in Ha.)	LONGITUDE	LATITUDE
1	VARANASI	ARAZILINE	Marui	5	40	1879	82°48' 5.551" E	25°11' 56.638" N
2			Jakhini				82°49' 59.859" E	25°11' 12.274" N
3			Sahansapur				82°51' 15.460" E	25°10' 33.978" N
4			Ramaipur				82°49' 4.926" E	25°11' 21.053" N
5			Sinhorwa				82°50' 39.770" E	25°10' 55.789" N
6			Tilanga				82°48' 17.082" E	25°10' 47.307" N
7		CHIRAIGAON	Bartharra Gangwar				83°7' 54.777" E	25°26' 2.526" N
8			Paranapur				83°7' 37.410" E	25°25' 38.748" N
9			Panditpur				83°8' 9.359" E	25°25' 27.018" N
10			Sheodabha Gangwarar				83°9' 0.879" E	25°25' 40.255" N
11			Sheodas Uparwar				83°9' 3.640" E	25°25' 3.604" N
12			Bharthara Kala				83°8' 12.391" E	25°24' 48.821" N
13			Ukthi				83°8' 2.449" E	25°23' 56.783" N
14			Chhitauni				83°8' 22.553" E	25°22' 11.928" N
15			Mustafabad				83°7' 53.496" E	25°20' 55.387" N
16			Jalhupur				83°7' 55.404" E	25°23' 0.361" N
17		CHOLAPUR	Nakhwan				83°10' 11.719" E	25°31' 2.333" N
18			Lachmisenpur				83°6' 10.979" E	25°31' 13.266" N
19			Tekuri				83°6' 38.318" E	25°31' 17.922" N
20			Azgara Khas				83°3' 46.271" E	25°29' 53.724" N
21			Dhaurhara				83°5' 56.560" E	25°29' 4.154" N
22			Pipri				83°4' 31.950" E	25°29' 6.430" N
23			Bela				83°2' 31.240" E	25°29' 4.967" N
24			Rauna Kala				83°2' 58.843" E	25°28' 31.118" N
25			Ajawan				83°4' 37.839" E	25°28' 5.745" N
26			Bhaghutipur				83°5' 3.604" E	25°28' 36.303" N
27			Barthara Khurd				83°3' 41.257" E	25°27' 55.045" N
28			Garthauli				83°5' 8.603" E	25°27' 53.209" N
29			Udho Rampur				83°4' 13.082" E	25°30' 53.051" N

30			Duduhan				83°6' 54.113" E	25°30' 40.225" N
31			Kaithi				83°9' 31.330" E	25°29' 43.642" N
32			Pauha				83°5' 27.941" E	25°29' 55.852" N
33		HARHUA	Dasepur				82°53' 16.882" E	25°22' 49.862" N
34			Anura				82°53' 4.448" E	25°22' 34.899" N
35			Bhagtupur				82°53' 27.506" E	25°22' 14.299" N
36			Koirajpur				82°54' 10.097" E	25°22' 4.478" N
37			Shahbuddinpur				82°54' 32.838" E	25°21' 56.949" N
38			Pisaur				82°56' 24.346" E	25°20' 18.917" N
39		KASHI VIDYA PEETH	Betwar				82°55' 43.938" E	25°13' 5.231" N
40			Karsara				82°54' 43.856" E	25°13' 16.943" N

**MAP FOR FLOOD AFFECTED AND WATERLOGGED AREAS ALONG GANGA AND GOMTI RIVERS IN PARTS OF VARANASI DISTRICT, U.P.  
( FLOOD AFFECTED AREA 1879 ha. AS ON 12 AUGUST 2021 )**



**Legend**

- District Boundary
- Block Boundary
- Village Boundary
- Major Rivers
- Flood As on 12 Aug 2021

Note :- Heavy Rain Inundated areas in parts of U.P (as on 12 August 2021) received from NRSC/ISRO, Hyderabad.

