

List of flood affected near by villages in Maharajganj District (U.P.) as on 7th Aug 2021

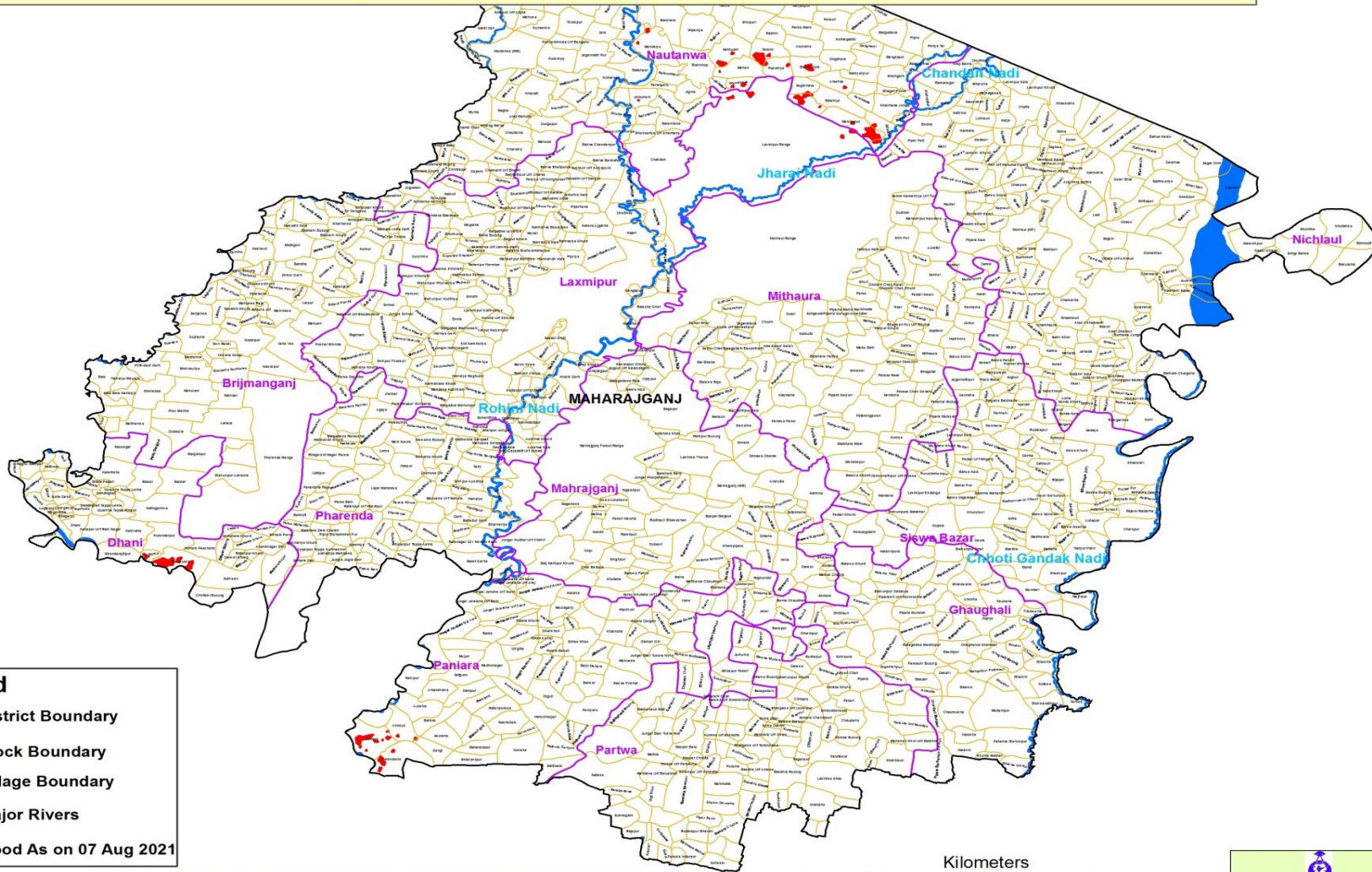
Flood affected blocks=04

Flood affected villages=23

Flood affected area=361 ha.

S.N.	DISTRICT	BLOCK	VILLAGE	BLOCK	VILLAGE	AFFECTED AREA (in Ha.)	LONGITUDE	LATITUDE
1	MAHRAJGANJ	Dhani	Sidhwari	4	23	361	83°15' 18.027" E	27°5' 3.120" N
2			Chhitahi Buzurg				83°14' 29.849" E	27°4' 15.376" N
3			Pachrukhi				83°13' 29.914" E	27°5' 34.689" N
4			Tal Berha				83°12' 22.018" E	27°5' 50.617" N
5		Laxmipur	Laxmipur Range				83°33' 52.028" E	27°21' 46.785" N
6		Nautanwa	Taraini				83°34' 23.725" E	27°25' 48.288" N
7			Bishunpura				83°35' 51.371" E	27°25' 11.234" N
8			Mahari				83°33' 27.006" E	27°25' 5.184" N
9			Piprahiya				83°34' 48.276" E	27°25' 7.046" N
10			Amahva				83°36' 49.607" E	27°24' 35.217" N
11			Sagarhava				83°35' 42.544" E	27°24' 25.170" N
12			Ghorahava				83°33' 26.496" E	27°24' 31.177" N
13			Belahiya				83°36' 54.803" E	27°23' 49.538" N
14			Ganeshpur				83°35' 50.397" E	27°23' 44.716" N
15			Manikapur				83°37' 27.603" E	27°22' 56.558" N
16			Sihabhar				83°38' 30.643" E	27°22' 35.388" N
17			Mahdeiya				83°30' 25.228" E	27°25' 57.543" N
18			Sekhuani				83°33' 3.673" E	27°25' 50.577" N
19			Jamuhani				83°29' 55.570" E	27°23' 59.018" N
20		Paniara	Ahirauli				83°21' 19.663" E	26°59' 6.054" N
21			Domara				83°20' 12.404" E	26°58' 33.644" N
22			Gangi				83°22' 31.108" E	26°58' 6.993" N
23			Narakataha				83°21' 17.503" E	26°57' 46.353" N

**MAP FOR FLOOD AFFECTED AND WATERLOGGED AREAS ALONG JHARAI AND ROHINI RIVERS IN PARTS OF MAHARAJGANJ DISTRICT, U.P.
(FLOOD AFFECTED AREA 361 ha. AS ON 07 AUGUST 2021)**



Legend

- District Boundary
- Block Boundary
- Village Boundary
- Major Rivers
- Flood As on 07 Aug 2021

Note :- Heavy Rain Inundated areas in parts of U.P (as on 07 August 2021) received from NRSC/ISRO, Hyderabad.

