

List of flood affected near by villages in Deoria District (U.P.) as on 7th Aug 2021

Flood affected blocks=06

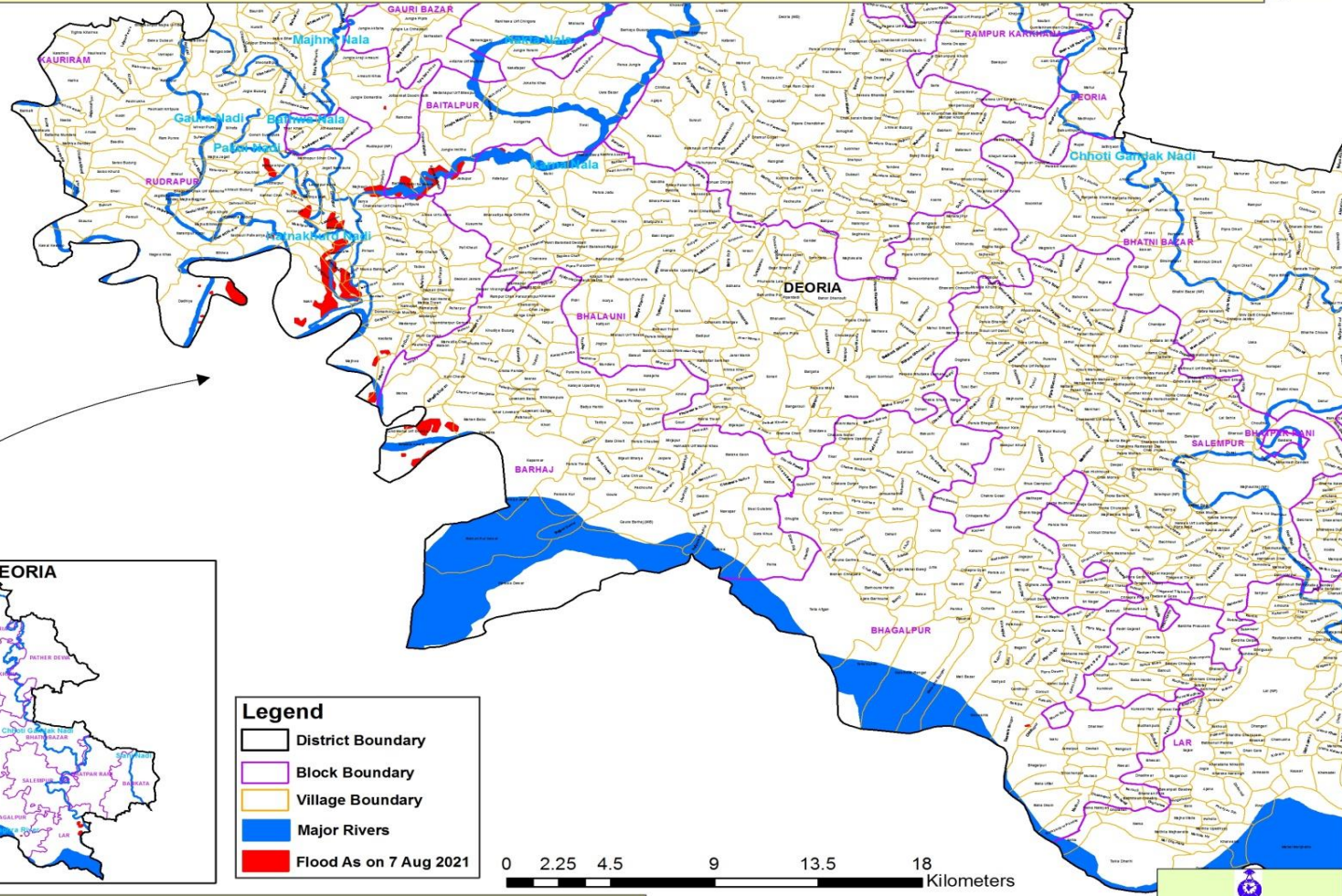
Flood affected villages=45

Flood affected area=144 ha.

S.N.	DISTRICT	BLOCK	VILLAGE	BLOCK	VILLAGE	AFFECTED AREA (in Ha.)	LONGITUDE	LATITUDE
1	DEORIA	BAITALPUR	Jungle Imiliha	6	45	144	83°39' 6.802" E	26°26' 43.855" N
2			Barhara				83°37' 51.579" E	26°25' 43.402" N
3			Karmel Banrahi				83°38' 38.528" E	26°25' 49.432" N
4			Harhi Nadolava				83°38' 16.999" E	26°25' 34.525" N
5		BARHAJ	Bhadila Awwal				83°38' 11.575" E	26°18' 49.078" N
6			Kund Mahal Urf Dhanya				83°37' 45.010" E	26°19' 10.233" N
7			Mahen Babu				83°39' 30.652" E	26°19' 27.992" N
8		BHAGALPUR	Chhitupur				83°52' 40.724" E	26°11' 20.166" N
9			Dewasia Bangar				83°52' 8.295" E	26°11' 20.959" N
10		BHALAUNI	Fatehpur				83°40' 2.060" E	26°25' 43.515" N
11			Jadupur				83°39' 21.865" E	26°25' 43.506" N
12		LAR	Matiara Jagadish				84°0' 2.901" E	26°13' 10.336" N
13			Mahal Parasi				84°0' 21.814" E	26°12' 57.932" N
14			Parasia Chak Lal				84°0' 53.558" E	26°12' 48.597" N
15			Goura Pandey				84°0' 41.785" E	26°12' 28.939" N
16			Ropan Chhapra				84°0' 6.848" E	26°12' 15.466" N
17			Mahal Garhwa				84°0' 47.755" E	26°12' 0.569" N
18			Garhwa Khas				84°0' 25.751" E	26°11' 51.453" N
19			Chatia				84°0' 6.673" E	26°11' 38.542" N
20			Patna				84°0' 13.063" E	26°11' 14.279" N
21		RUDRAPUR	Jungle Domardila				83°36' 57.048" E	26°27' 49.985" N
22			Gopalpur				83°37' 24.787" E	26°25' 51.697" N
23			Bhagwanpur				83°35' 0.018" E	26°26' 1.282" N
24			Majhauri				83°36' 55.077" E	26°25' 34.308" N
25			Vitthalpur				83°35' 2.760" E	26°25' 35.959" N
26			Tal Chanda				83°35' 25.955" E	26°25' 10.697" N
27			Dala				83°36' 50.622" E	26°24' 37.151" N
28			Sarya				83°36' 58.699" E	26°25' 8.787" N
29			Kritpura				83°38' 9.763" E	26°25' 3.274" N

30			Sonbarsa			83°35' 26.413" E	26°24' 52.091" N
31			Lakhanpur			83°36' 9.718" E	26°24' 38.211" N
32			Sachauli Patwaniya			83°34' 38.951" E	26°24' 19.051" N
33			Malahpurwa			83°35' 37.889" E	26°24' 15.807" N
34			Birmapur			83°36' 22.184" E	26°24' 15.600" N
35			Belurghat			83°36' 14.730" E	26°23' 34.041" N
36			Jot Belaura			83°36' 0.566" E	26°23' 18.755" N
37			Kaithwalia			83°36' 26.624" E	26°23' 48.683" N
38			Dadhiya			83°32' 59.727" E	26°22' 32.169" N
39			Nakil			83°35' 38.433" E	26°22' 30.191" N
40			Sikariya			83°36' 45.476" E	26°23' 17.510" N
41			Islamabad			83°37' 6.791" E	26°22' 56.006" N
42			Bishunpur			83°36' 44.102" E	26°22' 55.300" N
43			Keotalia			83°37' 27.164" E	26°21' 34.029" N
44			Majhwa			83°36' 50.998" E	26°20' 58.720" N
45			Patwania			83°37' 24.536" E	26°20' 33.479" N

**MAP FOR FLOOD AFFECTED AND WATERLOGGED AREAS ALONG KARNA AND RAPTI RIVERS IN PARTS OF DEORIA DISTRICT, U.P.
(FLOOD AFFECTED AREA 144 ha. AS ON 07 AUGUST 2021)**



- Legend**
- District Boundary
 - Block Boundary
 - Village Boundary
 - Major Rivers
 - Flood As on 7 Aug 2021



Note :- Heavy Rain Inundated areas in parts of U.P (as on 07 August 2021) received from NRSC/ISRO, Hyderabad.

