

List of flood affected near by villages in Varanasi District (U.P.) as on 9th Aug. 2021

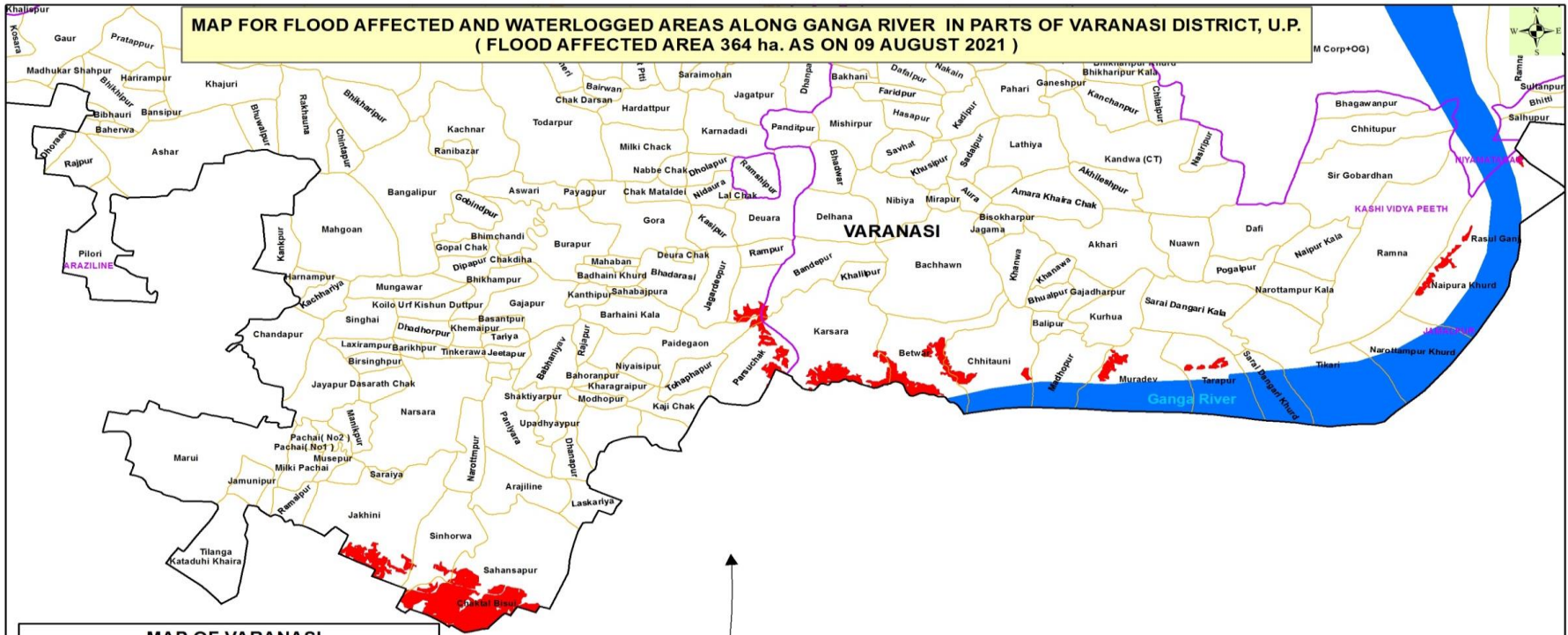
Flood affected blocks=4

Flood affected villages=19

Flood affected area=364 ha.

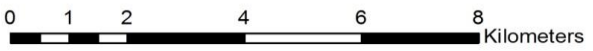
S.N.	DISTRICT	BLOCK	VILLAGE	BLOCK	VILLAGE	AFFECTED AREA (in Ha.)	LONGITUDE	LATITUDE
1	VARANASI	ARAZILINE	Jakhini	4	19	364	82° 49' 59.859" E	25° 11' 12.274" N
2			Sahansapur				82° 51' 15.460" E	25° 10' 33.978" N
3			Paidegaon				82° 53' 1.664" E	25° 13' 11.936" N
4			Sinhorwa				82° 50' 39.770" E	25° 10' 55.789" N
5			Gangpur				82° 53' 52.316" E	25° 13' 48.113" N
6			Parsuchak				82° 53' 53.092" E	25° 12' 56.308" N
7		CHIRAIGAON	Rasulabad				83° 1' 54.978" E	25° 21' 4.427" N
8			Salarpur				83° 2' 19.205" E	25° 20' 47.805" N
9			Khalispur				83° 2' 44.356" E	25° 20' 16.264" N
10			Kotwa				83° 3' 41.039" E	25° 20' 8.691" N
11		HARHUA	Varanasi (M Corp+OG)				82° 59' 37.172" E	25° 19' 26.824" N
12		KASHI VIDYA PEETH	Naipura Khurd				83° 1' 32.295" E	25° 14' 18.018" N
13			Betwar				82° 55' 43.938" E	25° 13' 5.231" N
14			Chhitauni				82° 56' 26.025" E	25° 12' 59.371" N
15			Bandepur				82° 54' 32.779" E	25° 14' 5.412" N
16			Karsara				82° 54' 43.856" E	25° 13' 16.943" N
17			Muradev				82° 57' 55.706" E	25° 12' 46.995" N
18			Madhopur				82° 57' 9.108" E	25° 12' 54.062" N
19			Tarapur				82° 58' 42.716" E	25° 12' 48.368" N

**MAP FOR FLOOD AFFECTED AND WATERLOGGED AREAS ALONG GANGA RIVER IN PARTS OF VARANASI DISTRICT, U.P.
(FLOOD AFFECTED AREA 364 ha. AS ON 09 AUGUST 2021)**



Legend

- District Boundary
- Block Boundary
- Village Boundary
- Major Rivers
- Flood As on 09 Aug 2021



Note :- Heavy Rain Inundated areas in parts of U.P (as on 09 August 2021) received from NRSC/ISRO, Hyderabad.

