

List of flood affected near by villages in Ballia District as on 16th August 2020

Flood affected blocks=13

Flood affected villages=581

| S.N. | DISTRICT | BLOCK | VILLAGE | TOTAL AFFECTED VILLAGES |
|------|----------|---------|--------------------------|-------------------------|
| 1 | BALLIA | BAIRIYA | Adhsijhua | 581 |
| 2 | | | Balihar | |
| 3 | | | Chai Chhupra | |
| 4 | | | Daya Chhupra | |
| 5 | | | Durjanpur | |
| 6 | | | Gobindauli | |
| 7 | | | Gopalpur | |
| 8 | | | Hanuman Garh | |
| 9 | | | Hewantpur | |
| 10 | | | Karmanpur | |
| 11 | | | Keharpur | |
| 12 | | | Madhubani | |
| 13 | | | Mahji Adhsijhua | |
| 14 | | | Man Garah | |
| 15 | | | Nauka Gaon | |
| 16 | | | Raja Tengaraha | |
| 17 | | | Sabalpur | |
| 18 | | | Shiwal | |
| 19 | | | Shri Nagar | |
| 20 | | | Shrikant Pur | |
| 21 | | | Sureman Pur | |
| 22 | | | Upadhyapur | |
| 23 | | BANSDIH | Adamapur | |
| 24 | | | Akolhi | |
| 25 | | | Alakh Diyari Taluka Khar | |
| 26 | | | Aubari | |
| 27 | | | Bagahi Taluka Bansdih | |
| 28 | | | Baghawan | |
| 29 | | | Bakawa | |
| 30 | | | Baleur | |
| 31 | | | Bansdih (NP) | |
| 32 | | | Bariyarpur Taluka Rukunp | |
| 33 | | | Bhagwanpur | |
| 34 | | | Bhawpur Taluka Bansdih | |
| 35 | | | Bijae Pur | |
| 36 | | | Bijuli Pur | |
| 37 | | | Bijulipur Taluka Arjunpu | |
| 38 | | | Chak Biliun Saheb | |
| 39 | | | Chandpur | |
| 40 | | | Chit Bisawa Khurd | |
| 41 | | | Chitbiswa Kala | |
| 42 | | | Dalpatpur | |
| 43 | | | Darawn | |

| | | | | |
|----|--|--|--------------------------|--|
| 44 | | | Dev Dih | |
| 45 | | | Dewrar | |
| 46 | | | Dhekwar | |
| 47 | | | Dighwara | |
| 48 | | | Diwakerpur | |
| 49 | | | Diyara Bhagar | |
| 50 | | | Diyara Lakhmi Rai | |
| 51 | | | Duhijan | |
| 52 | | | Ganeshpur Taluka Mudiyar | |
| 53 | | | Gangouli | |
| 54 | | | Godghappa | |
| 55 | | | Gojipur | |
| 56 | | | Gopalpur Taluka Maniyar | |
| 57 | | | Gopalpur Taluka Mudiari | |
| 58 | | | Gosai Pur | |
| 59 | | | Goura | |
| 60 | | | Habsipur | |
| 61 | | | Halpur | |
| 62 | | | Hardattpur | |
| 63 | | | Jaghata Sani | |
| 64 | | | Jaghata Surhiya | |
| 65 | | | Janpur | |
| 66 | | | Kabel Pur | |
| 67 | | | Kamalpur Taluka Kharouli | |
| 68 | | | Karanpur Taluka Majhos | |
| 69 | | | Kedarpur | |
| 70 | | | Kewara Taluka Bansdih | |
| 71 | | | Kewtallia Choube | |
| 72 | | | Kewtallia Kala | |
| 73 | | | Kewtallia Khurd | |
| 74 | | | Kewtallia Misir | |
| 75 | | | Khap Dhannantar | |
| 76 | | | Khapsakar Pura | |
| 77 | | | Kharouni | |
| 78 | | | Khewsad | |
| 79 | | | Khiru Chhapra Nambari | |
| 80 | | | Khorouli | |
| 81 | | | Kirtupur | |
| 82 | | | Kodhi Dih | |
| 83 | | | Kol Kala | |
| 84 | | | Maharajpur | |
| 85 | | | Majhwallia | |
| 86 | | | Malhouwa | |
| 87 | | | Mangal Pura | |
| 88 | | | Marawattiya Nambari | |
| 89 | | | Marwattia Noubrar | |
| 90 | | | Matouli Taluk Dumaria | |

| | | | | |
|-----|--|-------------|---------------------------|--|
| 91 | | | Misrouliya | |
| 92 | | | Mudiyari | |
| 93 | | | Mudiyari Taluka Chhitroo | |
| 94 | | | Mukam | |
| 95 | | | Nakahara Raut | |
| 96 | | | Nakhara Tiwari | |
| 97 | | | Narla | |
| 98 | | | Narottampur Kala | |
| 99 | | | Naryanpur Taluka Mudiyar | |
| 100 | | | Pakdiya | |
| 101 | | | Parashuram Pur | |
| 102 | | | Parbatpur | |
| 103 | | | Pathkhoulis Surhiya | |
| 104 | | | Pathkhoulis T.Ajameri Rai | |
| 105 | | | Patkhoulis Junardar | |
| 106 | | | Patti Shahi | |
| 107 | | | Pilui Taluka Bansdih | |
| 108 | | | Pokhrad | |
| 109 | | | Rampur Kala | |
| 110 | | | Rampur Khurd | |
| 111 | | | Rampur Nambari | |
| 112 | | | Rampur Noubrar | |
| 113 | | | Regha | |
| 114 | | | Rukunpura | |
| 115 | | | Sakar Pura | |
| 116 | | | Saman Pura | |
| 117 | | | Sarangpur | |
| 118 | | | Shahpur Taluka Bansdih | |
| 119 | | | Sonbasi Dube | |
| 120 | | | Sonbasi Tiwari | |
| 121 | | | Tajpur | |
| 122 | | | Tandawa Taluka Bansdih | |
| 123 | | | Unchayat | |
| 124 | | BARUWARDARI | Achhuhi | |
| 125 | | | Adar | |
| 126 | | | Akhitiyarpur | |
| 127 | | | Ankanthpur | |
| 128 | | | Aundhi | |
| 129 | | | Badasari | |
| 130 | | | Bairria | |
| 131 | | | Bhankapur | |
| 132 | | | Bhimpur | |
| 133 | | | Bind Wallia | |
| 134 | | | Chhitrouli | |
| 135 | | | Dhanpur | |
| 136 | | | Fafer | |
| 137 | | | Gadari Pah | |

| | | | | |
|-----|--|---------|--------------------------|--|
| 138 | | | Gajiyapur | |
| 139 | | | Harizanpur | |
| 140 | | | Jagdishpur Urf Karamtar | |
| 141 | | | Jajiyapur | |
| 142 | | | Janpur Jadopur | |
| 143 | | | Kaitwali | |
| 144 | | | Kawalpura Taluka Bansdih | |
| 145 | | | Kisunpura Taluka Chhitro | |
| 146 | | | Kol Dumrria | |
| 147 | | | Kol Khurd | |
| 148 | | | Madhopur | |
| 149 | | | Mairitar | |
| 150 | | | Majha | |
| 151 | | | Majhos Khurd | |
| 152 | | | Narainpur Taluka Majhos | |
| 153 | | | Narayanpur Taluka Sahtwa | |
| 154 | | | Pahiya Taluka Majhos | |
| 155 | | | Porandarpur | |
| 156 | | | Rajpur | |
| 157 | | | Saho Dih | |
| 158 | | | Saphi | |
| 159 | | | Shivpur Taluka Sukhpura | |
| 160 | | | Shivrampur | |
| 161 | | | Sidhouli Taluka Sukhpura | |
| 162 | | | Sirmour Taluka Balupur | |
| 163 | | | Sujouli | |
| 164 | | | Sultanpur Taluka Majhos | |
| 165 | | | Surujpura Taluka Sukhpur | |
| 166 | | | Talpuni Sani Abal | |
| 167 | | | Tandawa Taluka Sahatwar | |
| 168 | | | Theliya | |
| 169 | | | Ubhawallia | |
| 170 | | BELHARI | Baruna | |
| 171 | | | Bashudher Pah | |
| 172 | | | Bharsouta | |
| 173 | | | Bouna Chak | |
| 174 | | | Dighai | |
| 175 | | | Dighar | |
| 176 | | | Dudhaila | |
| 177 | | | Gangapur | |
| 178 | | | Kammi | |
| 179 | | | Kathahi | |
| 180 | | | Khajkuhati | |
| 181 | | | Kripalpur | |
| 182 | | | Lakhpur | |
| 183 | | | Madadih | |
| 184 | | | Malikpura | |

| | | | | |
|-----|--|--------|-----------------------|--|
| 185 | | | Megha Math | |
| 186 | | | Panchrukha | |
| 187 | | | Parsia | |
| 188 | | | Pindari | |
| 189 | | | Pithroura | |
| 190 | | | Puras | |
| 191 | | | Puras English | |
| 192 | | | Raghunathpur | |
| 193 | | | Rotua | |
| 194 | | | Samarath Pah | |
| 195 | | | Shukla Chhapra | |
| 196 | | | Sita Kund | |
| 197 | | | Sonwari | |
| 198 | | | Sultanpur | |
| 199 | | | Tulapur | |
| 200 | | DUBHAR | Aamghat | |
| 201 | | | Akhar | |
| 202 | | | Alaspur | |
| 203 | | | Amawa | |
| 204 | | | Arazi Mafi Imrit Pali | |
| 205 | | | Baghauri | |
| 206 | | | Bakarpur | |
| 207 | | | Balipur | |
| 208 | | | Balua | |
| 209 | | | Bavan Part I | |
| 210 | | | Bela | |
| 211 | | | Bishambharpur | |
| 212 | | | Boha Khas | |
| 213 | | | Brahm Devta | |
| 214 | | | Chakdah | |
| 215 | | | Chandawak | |
| 216 | | | Chawari | |
| 217 | | | Chawari Karan | |
| 218 | | | Chhapara | |
| 219 | | | Dubauli | |
| 220 | | | Dumari | |
| 221 | | | Dumri Ta.Sher | |
| 222 | | | Eamandih | |
| 223 | | | Gadari | |
| 224 | | | Ghaghrauli | |
| 225 | | | Gherai | |
| 226 | | | Ghorauli | |
| 227 | | | Gokhali | |
| 228 | | | Govindpur | |
| 229 | | | Hankarpur | |
| 230 | | | Imrit Pali | |
| 231 | | | Jagdishpur Kalan | |

| | | | | |
|-----|--|-------------|--------------------------|--|
| 232 | | | Jagdishpur Khurd | |
| 233 | | | Jalalpur Khurd | |
| 234 | | | Khand Piyaria | |
| 235 | | | Kulparia Mutlke Basantpu | |
| 236 | | | Madhopur | |
| 237 | | | Mafi Rampur | |
| 238 | | | Majhouli Taluke Harpur | |
| 239 | | | Maniari Jasaan | |
| 240 | | | Mathia | |
| 241 | | | Mohanchapra | |
| 242 | | | Narainpur | |
| 243 | | | Patkauli | |
| 244 | | | Pipra | |
| 245 | | | Pitamber Chak | |
| 246 | | | Pratappur Kalan | |
| 247 | | | Pratappur Khurd | |
| 248 | | | Raghunathpur | |
| 249 | | | Ralhia | |
| 250 | | | Rampur Ti Ti Hi | |
| 251 | | | Ratnauli | |
| 252 | | | Rupaupur | |
| 253 | | | Sahras Pali | |
| 254 | | | Salempur | |
| 255 | | | Saraya | |
| 256 | | | Savru Band | |
| 257 | | | Sher | |
| 258 | | | Singhantar English | |
| 259 | | | Singhantar I | |
| 260 | | | Singhantar li | |
| 261 | | | Singhli | |
| 262 | | | Sohilpur | |
| 263 | | | Sonbarsa Khas | |
| 264 | | | Sonpur Kalan | |
| 265 | | | Sonpur Khurd | |
| 266 | | | Suremanpur | |
| 267 | | | Taghrauli | |
| 268 | | | Tiwari Barhata | |
| 269 | | HANUMANGANJ | Araji English Basantpur | |
| 270 | | | Basantpur Ehatmali | |
| 271 | | | Basantpur Mustahakam | |
| 272 | | | Basdeopur | |
| 273 | | | Bhaidpur | |
| 274 | | | Bheekhpur | |
| 275 | | | Brahmaine | |
| 276 | | | Chhorhar | |
| 277 | | | Jira Basti | |
| 278 | | | Paraspur | |

| | | | | |
|-----|--|---------|--------------------------|--|
| 279 | | | Shankarpur | |
| 280 | | | Shreepur | |
| 281 | | | Talsurha | |
| 282 | | MANIYAR | A. Khiruchapara Nobrar | |
| 283 | | | Ahirouli Jagir | |
| 284 | | | Ahirouli Pandey | |
| 285 | | | Ajaour | |
| 286 | | | Ajnera | |
| 287 | | | Alasgarh Khas | |
| 288 | | | Araji Mafi Jogia | |
| 289 | | | Asana | |
| 290 | | | Bada Gaon | |
| 291 | | | Badsari Jagir | |
| 292 | | | Bahdura | |
| 293 | | | Baholia | |
| 294 | | | Balupur | |
| 295 | | | Baswarria | |
| 296 | | | Bhad Pura | |
| 297 | | | Bhagipur | |
| 298 | | | Bhoj Purwa | |
| 299 | | | Bijulipur | |
| 300 | | | Bisunpura Taluka Maniyar | |
| 301 | | | Chak Dudhwallia | |
| 302 | | | Chakful | |
| 303 | | | Chakki Diyara Sultanpur | |
| 304 | | | Chandayar | |
| 305 | | | Chhitooni | |
| 306 | | | Chor Kand | |
| 307 | | | Degheda | |
| 308 | | | Dewapur | |
| 309 | | | Dhanauti | |
| 310 | | | Dharampur | |
| 311 | | | Dhuraudha | |
| 312 | | | Diyara Harana Tar | |
| 313 | | | Diyara Mahaji Kashi Datt | |
| 314 | | | Diyara Maniyar | |
| 315 | | | Diyara Maniyar li | |
| 316 | | | Durgipur | |
| 317 | | | Dutpur | |
| 318 | | | Echouna Taluka Maniyar | |
| 319 | | | Fatehpur Khas | |
| 320 | | | Fatehpur Noubrar | |
| 321 | | | Gai Ghat | |
| 322 | | | Gangapur | |
| 323 | | | Gaura Baghi | |
| 324 | | | Gauri Shahpur | |
| 325 | | | Ghatampur | |

| | | | | |
|-----|--|---------------|--------------------------|--|
| 326 | | | Gokul Chak | |
| 327 | | | Hathouj | |
| 328 | | | Jigirsand | |
| 329 | | | Jigni | |
| 330 | | | Jildapur | |
| 331 | | | Kajipur | |
| 332 | | | Kakar Ghatta Khas | |
| 333 | | | Khadipur | |
| 334 | | | Khambhari | |
| 335 | | | Kharid | |
| 336 | | | Khema Pur Taluka Maniyar | |
| 337 | | | Kotwa | |
| 338 | | | Letaraha | |
| 339 | | | Mahlipur | |
| 340 | | | Mahthapar | |
| 341 | | | Maksudanpur | |
| 342 | | | Malahi Chak | |
| 343 | | | Manikpur | |
| 344 | | | Maniyar (NP) | |
| 345 | | | Mohan Pura | |
| 346 | | | Mustafabad | |
| 347 | | | Nipnnia | |
| 348 | | | Nowat No. 3 | |
| 349 | | | Nowat No. I | |
| 350 | | | Panicha | |
| 351 | | | Path Kholi West | |
| 352 | | | Patti Tara Kol | |
| 353 | | | Pilue | |
| 354 | | | Pranpur | |
| 355 | | | Puru Shotim Patti | |
| 356 | | | Rampur Taluka Maniyar | |
| 357 | | | Ranipur | |
| 358 | | | Rasulpur | |
| 359 | | | Sangapur Taluka Maniyar | |
| 360 | | | Sarkanda | |
| 361 | | | Sonu Pah | |
| 362 | | | Sultanpur Taluka Bansdih | |
| 363 | | | Tahirpur Taluka Bansdih | |
| 364 | | | Tika Chak | |
| 365 | | | Udaipur | |
| 366 | | MURLI CHHAPRA | Chand Diar | |
| 367 | | | Ibrahimabad Noabarar | |
| 368 | | | Ibrahimabad Uparwar | |
| 369 | | | Jajira No. 36 | |
| 370 | | NAGRA | Karni | |
| 371 | | NAWA NAGAR | Araji Kariyapar | |
| 372 | | | Barhuncha | |

| | | | |
|-----|--|--------|--------------------------|
| 373 | | | Chak Haji Urf Shekhpur |
| 374 | | | Chak Miran |
| 375 | | | Chak Pema Urf Marwattiya |
| 376 | | | Chanduki |
| 377 | | | Diyara Amarpur |
| 378 | | | Diyara Karmaha |
| 379 | | | Duha Bihra |
| 380 | | | Jahidipur |
| 381 | | | Jalali Pur |
| 382 | | | Jamalpur |
| 383 | | | Jamue |
| 384 | | | Kathooda |
| 385 | | | Lilkar |
| 386 | | | Majhwallia |
| 387 | | | Mueya |
| 388 | | | Narhami Turk Ballia |
| 389 | | | Santhi Eksar |
| 390 | | | Sisotar Diyara |
| 391 | | | Siwan Kala |
| 392 | | | Siwan Khurd |
| 393 | | | Son Purwa |
| 394 | | PANDAH | Babarapur |
| 395 | | | Bankata |
| 396 | | | Bhuda Dih |
| 397 | | | Firojpur Chak Usuf |
| 398 | | | Godoura |
| 399 | | | Kathwallia |
| 400 | | | Khadasara |
| 401 | | | Khejuri |
| 402 | | | Koodiya |
| 403 | | | Masumpur |
| 404 | | REWATI | Aasman Dhodha |
| 405 | | | Aghaila |
| 406 | | | Akbarpura |
| 407 | | | Araji Mafi Atar Darria |
| 408 | | | Araji Mafi Bishunpura |
| 409 | | | Araji Mafi Jharkataha Ea |
| 410 | | | Araji Mafi Jharkataha We |
| 411 | | | Araji Mafi Moon Chhupra |
| 412 | | | Araji Mafi Moon Chhupra |
| 413 | | | Arjunpah |
| 414 | | | Atardarria |
| 415 | | | Babhanawali Taluk Handih |
| 416 | | | Babhnauli Taluk Rewati |
| 417 | | | Bagiya Taluk Dumeria |
| 418 | | | Balbir Naina |
| 419 | | | Bashistha Nagar |

| | | | | |
|-----|--|--|--------------------------|--|
| 420 | | | Belhari | |
| 421 | | | Bhagawanpur | |
| 422 | | | Bhakhar | |
| 423 | | | Bharouli | |
| 424 | | | Bhasha | |
| 425 | | | Bhawpur Taluka Gayghat | |
| 426 | | | Bhisiya | |
| 427 | | | Bhoj Chhapara | |
| 428 | | | Bhopalpur | |
| 429 | | | Bhopatpur | |
| 430 | | | Bindaha | |
| 431 | | | Bishunpura | |
| 432 | | | Bisouli | |
| 433 | | | Budhirampur | |
| 434 | | | Chapra Sakhi | |
| 435 | | | Chherdih | |
| 436 | | | Chhitarpah | |
| 437 | | | Choubepur | |
| 438 | | | Choubey Chhapara | |
| 439 | | | Dattaha | |
| 440 | | | Deopur | |
| 441 | | | Dhira Chhapara | |
| 442 | | | Diara Gangapur | |
| 443 | | | Dumeria | |
| 444 | | | Galaferpur | |
| 445 | | | Gayghat | |
| 446 | | | Gayghat Taluk Rewati | |
| 447 | | | Ghaghrauli | |
| 448 | | | Ghurbhari Charkani | |
| 449 | | | Gopal Nagar | |
| 450 | | | Hadiha Kala | |
| 451 | | | Hadiha Khurd | |
| 452 | | | Hariharpur | |
| 453 | | | Harpur Taluk Dumeria | |
| 454 | | | Hasanpura | |
| 455 | | | Husenabad | |
| 456 | | | Jagdishpur Taluka Rewati | |
| 457 | | | Jamgharwa | |
| 458 | | | Janpah | |
| 459 | | | Jharkataha | |
| 460 | | | Kachhua | |
| 461 | | | Kalyanpur | |
| 462 | | | Kamalpur | |
| 463 | | | Kamta | |
| 464 | | | Kanchanpur | |
| 465 | | | Kawalpura | |
| 466 | | | Kewa | |

| | | | | |
|-----|--|--|------------------------|--|
| 467 | | | Khadara | |
| 468 | | | Khanpur Taluk Bansdeeh | |
| 469 | | | Khirotharpur | |
| 470 | | | Kumhaila | |
| 471 | | | Kunwa Piper | |
| 472 | | | Kushar | |
| 473 | | | Kusouri Kala | |
| 474 | | | Kusouri Khurd | |
| 475 | | | Lakshman Dhodha | |
| 476 | | | Lamuhi | |
| 477 | | | Mahadhanpur | |
| 478 | | | Mahendar Pur | |
| 479 | | | Majha | |
| 480 | | | Mangit Chhap | |
| 481 | | | Mansingh Chhapra | |
| 482 | | | Marauti | |
| 483 | | | Mathnag Nath | |
| 484 | | | Mathouli | |
| 485 | | | Misrouli Taluk Gayghat | |
| 486 | | | Mohan Chkani | |
| 487 | | | Mohan Dhodha | |
| 488 | | | Moon Chhupra | |
| 489 | | | Munda Dih | |
| 490 | | | Naina | |
| 491 | | | Nawak Gaon | |
| 492 | | | Nawapur | |
| 493 | | | Nouwa Bara | |
| 494 | | | Pachrukha | |
| 495 | | | Pakaha | |
| 496 | | | Pandouli | |
| 497 | | | Parasiya Jharkataha | |
| 498 | | | Rajouli Taluka Gayghat | |
| 499 | | | Rajouli Taluka Sahtwar | |
| 500 | | | Rakhahar Noorpur | |
| 501 | | | Ramouli | |
| 502 | | | Rampur Ta Reoti | |
| 503 | | | Rampur(Magrib) | |
| 504 | | | Reoti (NP) | |
| 505 | | | Sahatwar (NP) | |
| 506 | | | Seru Baha | |
| 507 | | | Serwa | |
| 508 | | | Sheopur | |
| 509 | | | Sighi | |
| 510 | | | Somnathpur | |
| 511 | | | Sonbarasa | |
| 512 | | | Sonbarsa Taluk Dumeria | |
| 513 | | | Tirkalpur | |

| | | | | |
|-----|--|------|--------------------------|--|
| 514 | | | Udaha | |
| 515 | | | Umati | |
| 516 | | SIAR | Akhop | |
| 517 | | | Arazi Guloura | |
| 518 | | | Autroul Chak Milkan | |
| 519 | | | Babhoul T. Telma | |
| 520 | | | Bahorwa Khurd | |
| 521 | | | Bahuta Chak Upadhaya | |
| 522 | | | Banspar Bahorwa | |
| 523 | | | Baraitha | |
| 524 | | | Belthara Road (NP) | |
| 525 | | | Belthra Bazar | |
| 526 | | | Bhadaura Tarchhapar | |
| 527 | | | Bhagwanpur | |
| 528 | | | Bhantpur | |
| 529 | | | Bhind Kund | |
| 530 | | | Bithua | |
| 531 | | | Buddhipur | |
| 532 | | | Chainpur Guloura | |
| 533 | | | Chainpur T. Parshurampur | |
| 534 | | | Chak Mehar Ali Urf Maurh | |
| 535 | | | Chakia Imilia | |
| 536 | | | Chandadih | |
| 537 | | | Chandan Patti Nirbhaipur | |
| 538 | | | Chandayar Kala | |
| 539 | | | Chandayar Walipur | |
| 540 | | | Choukia | |
| 541 | | | Dholpur | |
| 542 | | | Dihawan | |
| 543 | | | Diyara Sir Sarkar | |
| 544 | | | Doth | |
| 545 | | | Gauri Lal Ghosa | |
| 546 | | | Haldi Rampur | |
| 547 | | | Imilia | |
| 548 | | | Indauli Zamin Indalli | |
| 549 | | | Jahidpur | |
| 550 | | | Jamin Tendua | |
| 551 | | | Kakraso | |
| 552 | | | Karim Ganj | |
| 553 | | | Khaira Bas | |
| 554 | | | Koria Baijnath | |
| 555 | | | Kundail Niyamat Ali | |
| 556 | | | Kundail Shah | |
| 557 | | | Kunwarpur | |
| 558 | | | Kupat | |
| 559 | | | Mahendua | |
| 560 | | | Majhowa | |

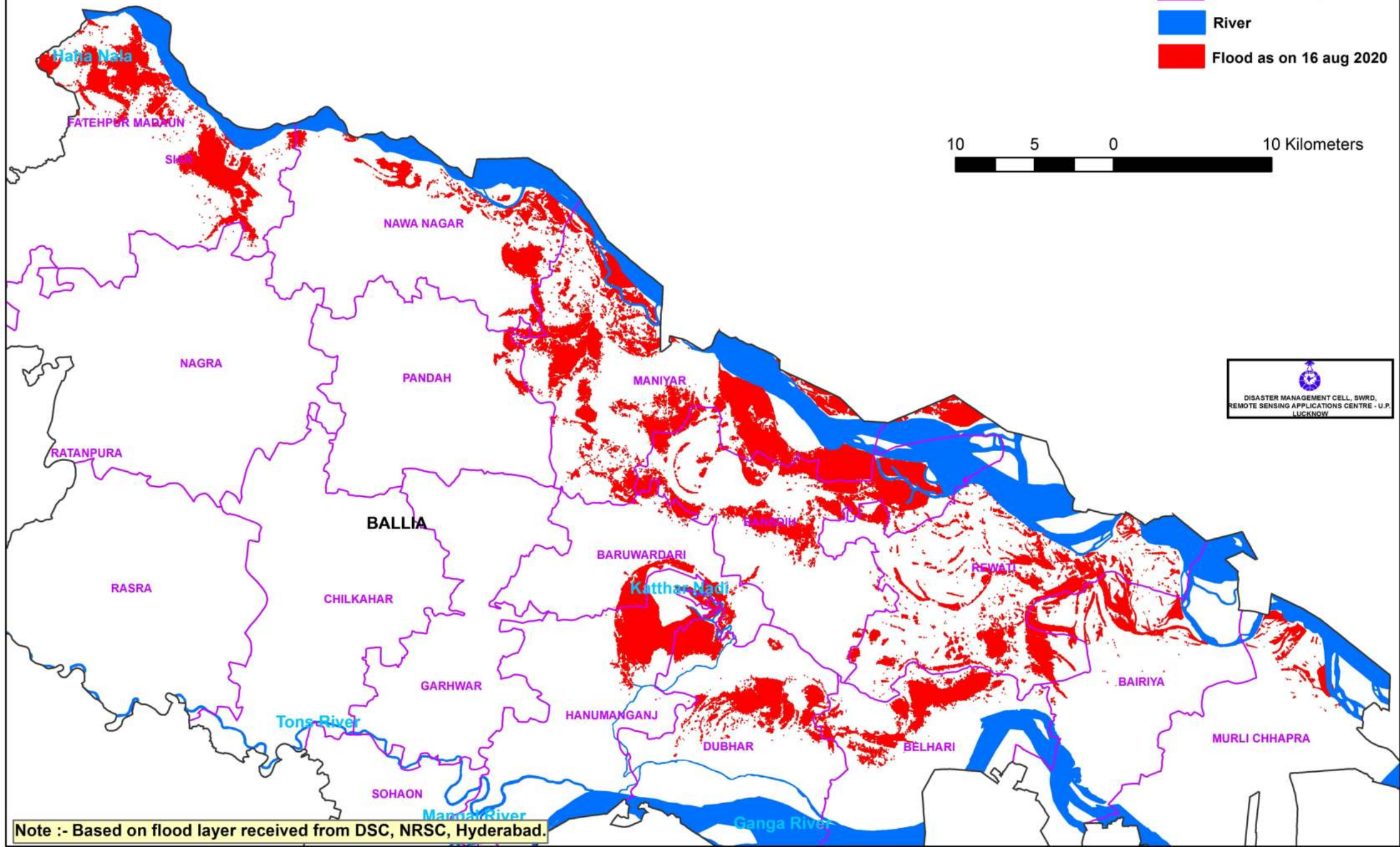
| | | | | |
|-----|--|--|-----------------------|--|
| 561 | | | Majhwalia | |
| 562 | | | Molnapur | |
| 563 | | | Mubarakpur | |
| 564 | | | Padri | |
| 565 | | | Parsa Nandouli Tajpur | |
| 566 | | | Patnari Kirtupur | |
| 567 | | | Piprouli | |
| 568 | | | Rachhali | |
| 569 | | | Rampur Chandayar | |
| 570 | | | Shahpur Afga | |
| 571 | | | Shahunpur | |
| 572 | | | Shekhpur | |
| 573 | | | Sikroor Chandour | |
| 574 | | | Sonadih | |
| 575 | | | Tangunia | |
| 576 | | | Telma Jamaluddinpur | |
| 577 | | | Tendua Patti Farsatar | |
| 578 | | | Tenduhari | |
| 579 | | | Tirnai Khurd | |
| 580 | | | Turtipar | |
| 581 | | | Ubhanv | |

FLOOD AFFECTED AND WATERLOGGED AREA ALONG GHAGHRA RIVER IN BALLIA DISTRICT, U.P.



Legend

-  District Boundary
-  Block Boundary
-  River
-  Flood as on 16 aug 2020



Note :- Based on flood layer received from DSC, NRSC, Hyderabad.