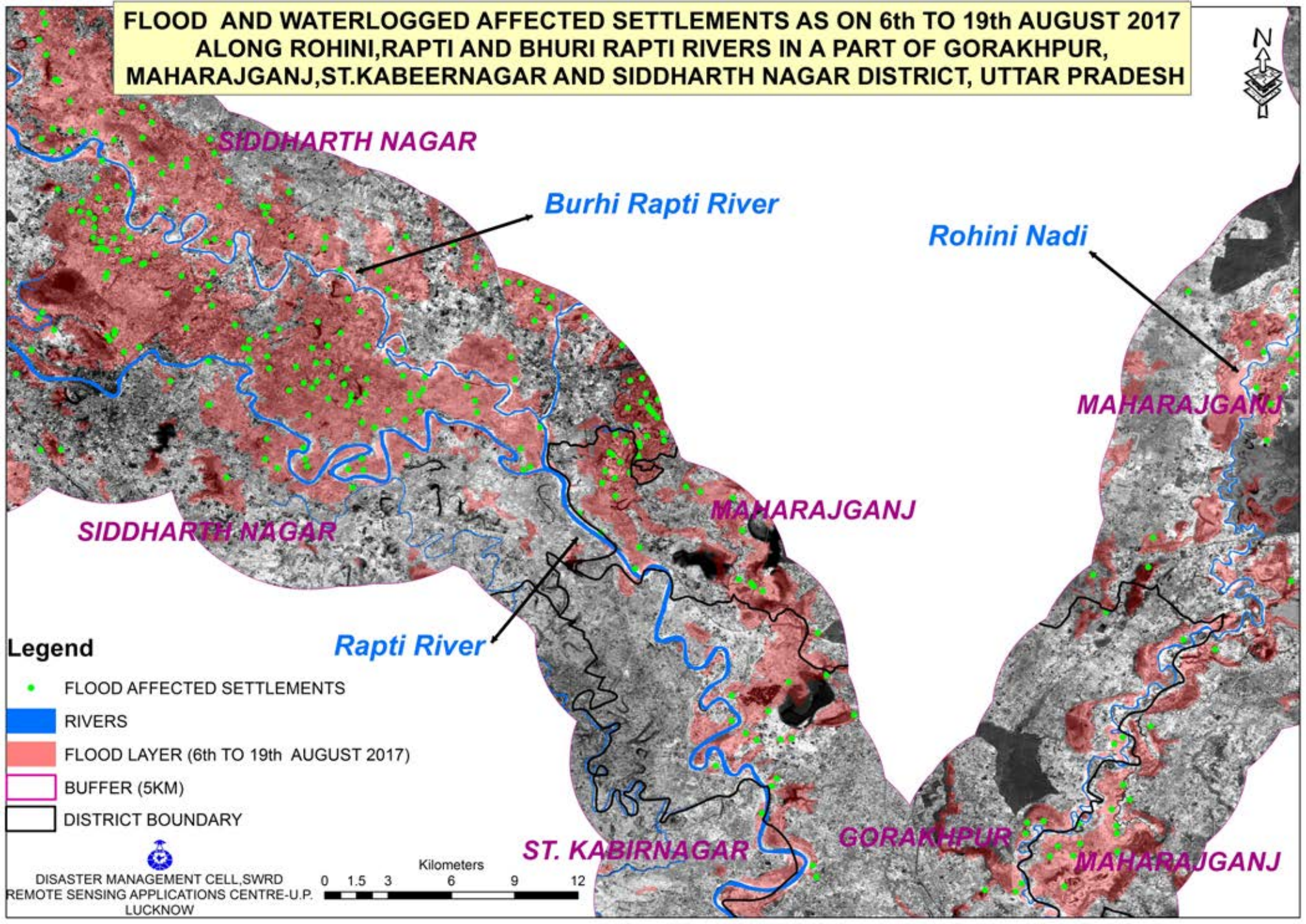


**FLOOD AND WATERLOGGED AFFECTED SETTLEMENTS AS ON 6th TO 19th AUGUST 2017
ALONG ROHINI,RAPTI AND BURHI RAPTI RIVERS IN A PART OF GORAKHPUR,
MAHARAJGANJ,ST.KABEERNAGAR AND SIDDHARTH NAGAR DISTRICT, UTTAR PRADESH**



Legend

- FLOOD AFFECTED SETTLEMENTS
- RIVERS
- FLOOD LAYER (6th TO 19th AUGUST 2017)
- BUFFER (5KM)
- DISTRICT BOUNDARY


DISASTER MANAGEMENT CELL, SWRD
REMOTE SENSING APPLICATIONS CENTRE-U.P.
LUCKNOW



SIDDHARTH NAGAR

Burhi Rapti River

Rohini Nadi

MAHARAJGANJ

MAHARAJGANJ

SIDDHARTH NAGAR

Rapti River

ST. KABIRNAGAR

GORAKHPUR

MAHARAJGANJ