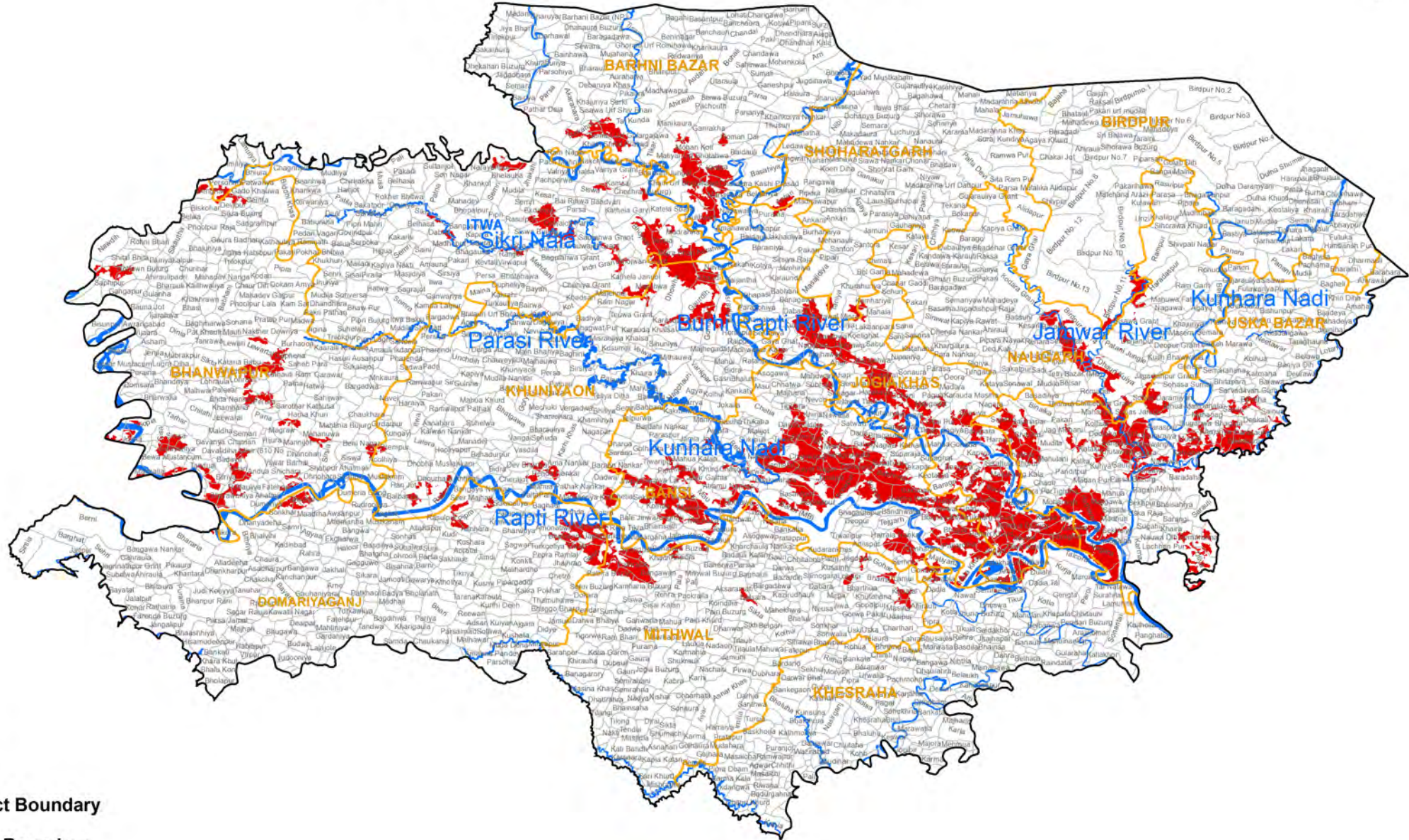







FLOOD AFFECTED AREAS ALONG MAJOR RIVER IN SIDDHARTHANAGAR DISTRICT, U. P.



Legend

-  District Boundary
-  Block Boundary
-  Village Boundary
-  Flood Affected Area 26th Aug 2017
-  River 2016



DISASTER MANAGEMENT CELL, SWRD,
REMOTE SENSING APPLICATIONS CENTRE - U.P.
LUCKNOW



Note :- Based on flood layer received from DSC, NRSC, Hyderabad.