








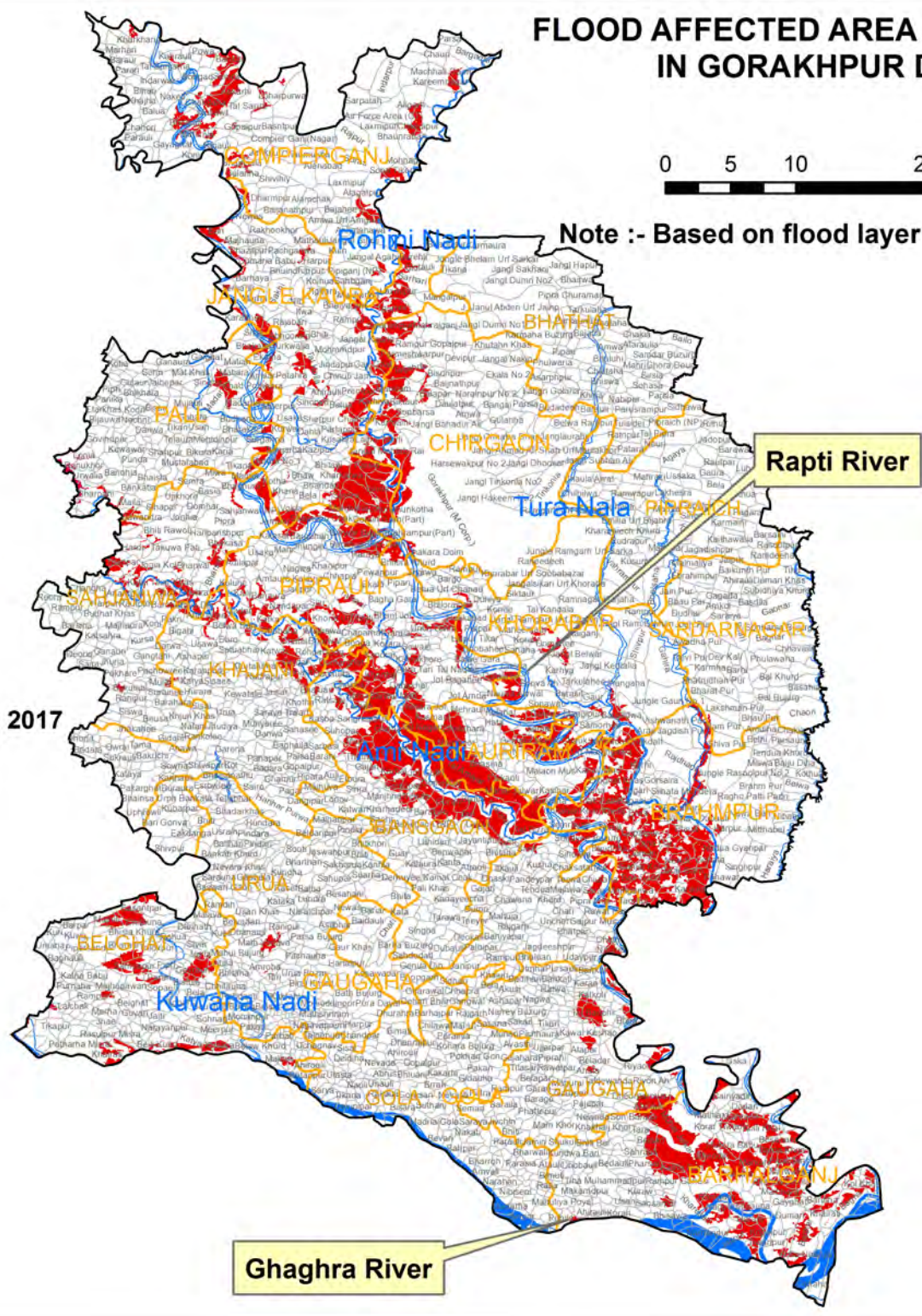
# FLOOD AFFECTED AREA ALONG MAJOR RIVER IN GORAKHPUR DISTRICT , U. P.



Note :- Based on flood layer received from DSC, NRSC, Hyderabad.

## Legend

-  District Boundary
-  Block Boundary
-  Village Boundary
-  Flood Affected area 26th Aug 2017
-  River 2016



Ghaghra River

Rapti River